

Backup/archive rendszerek

az IBM Tivoli Storage Manager
megvalósításán keresztül

04. IBM TSM - szerver installálás konfigurálás

Böttkös László
lbottkos.technical@gmail.com

IBM TSM szerver installáció és alap konfigurációs lépések

- I. IBM TSM szerver „requirements”
- II. IBM TSM szerver installáció
 - II.1. IBM TSM szerver installációs előkészítő lépések
 - II.2. IBM TSM szerver installációs lépések (1)
 - II.3. IBM TSM szerver installációs lépések (2)
- III. IBM TSM szerver instance létrehozása
 - III.1. Instance létrehozása előtti lépések
 - III.2. Instance generálása

I. IBM TSM szerver „requirements”

Type of hardware	Hardware Requirements
Hardware	An AMD64 or Intel EMT-64 processor
Disk Space	<p>The following minimum values for disk space:</p> <ul style="list-style-type: none">• At least 5 GB of free disk storage (for a typical installation)• 60 MB in the temporary directory space• 2 GB partition size in the C:\ drive• 300 MB in the instance directory• 2 GB for the shared resources area <p>Significant additional disk space is required for database and log files. The size of the database depends on the number of client files to be stored and the method by which the server manages them. The default active log space is 16 GB, the minimum that is needed for most workloads and configurations. When you create the active log, you need at least 64 GB in size to run replication. If replication and deduplication are both being used, create an active log of 128 GB in size. Allocate at least three times the default active log space for the archive log (48 GB). Ensure that you have sufficient resources if you are using data deduplication or expect a heavy client workload.</p> <p>For optimal performance and to facilitate I/O, specify at least two equally sized containers or Logical Unit Numbers (LUNs) for the database. See IBM Tivoli Storage Manager Optimizing Performance (http://www.ibm.com/support/knowledgecenter/SSGSG7_7.1.1/com.ibm.itsm.perf.doc/c_howtouseinfo.html) for more information about the configuration of directories for the database. In addition, each active log and archive log should have its own container or LUN.</p> <p>Ensure that you see the capacity planning section for more details about disk space.</p>

Memory	<p>The following minimum values for memory:</p> <ul style="list-style-type: none"> v 12 GB. v 16 GB if you are using data deduplication. v At least 32 GB for heavily used servers. Using 32 GB or more of memory enhances performance of the Tivoli Storage Manager server database inventory. v If you plan to run multiple instances, each instance requires the memory listed for one server. Multiply the memory for one server by the number of instances planned for the system. v If you plan to use node replication without data deduplication, the system requires 32 GB of memory. Node replication with data deduplication requires a minimum of 64 GB of memory.
Type of Software	Minimum software requirements
Operating system	<p>One of the following operating systems:</p> <ul style="list-style-type: none"> v Microsoft Windows Server 2008 R2: Standard, Enterprise, or Datacenter Edition (64-bit) v Microsoft Windows Server 2012 (64-bit) v Microsoft Windows Server 2012 R2 (64-bit)
Communication	At least one of the following communication protocols (installed by

protocol	default with the current Windows operating systems): v Named Pipes v TCP/IP Version 4 or Version 6
Device drivers	<p>The Tivoli Storage Manager passthru device driver that is required for non-IBM drives and tape libraries. The Windows native device driver is recommended for tape drives and tape libraries. Otherwise, the Tivoli Storage Manager kernel device driver can be used.</p> <p>For the IBM 3590, 3592, or the Ultrium tape library or drives, the IBM device drivers are required. Install the most current device drivers. You can locate IBM driver packages at the Fix Central website: http://www.ibm.com/support/fixcentral/.</p> <p>Configure the device drivers before you use the Tivoli Storage Manager server with tape devices.</p>
Other software	<p>Windows 2012 requires that .NET Framework 3.5 is installed and enabled.</p> <p>The following User Account Control policies must be disabled:</p> <ul style="list-style-type: none">• User Account Control: Admin Approval Mode for the Built-in Administrator account• User Account Control: Run all administrators in Admin Approval Mode

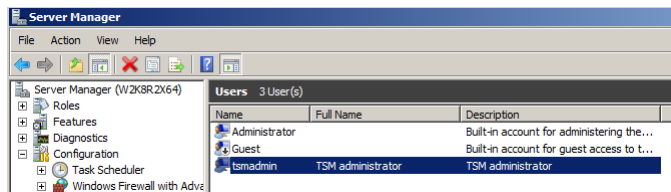
II. IBM TSM szerver installáció

II.1. IBM TSM szerver installációs előkészítő lépések

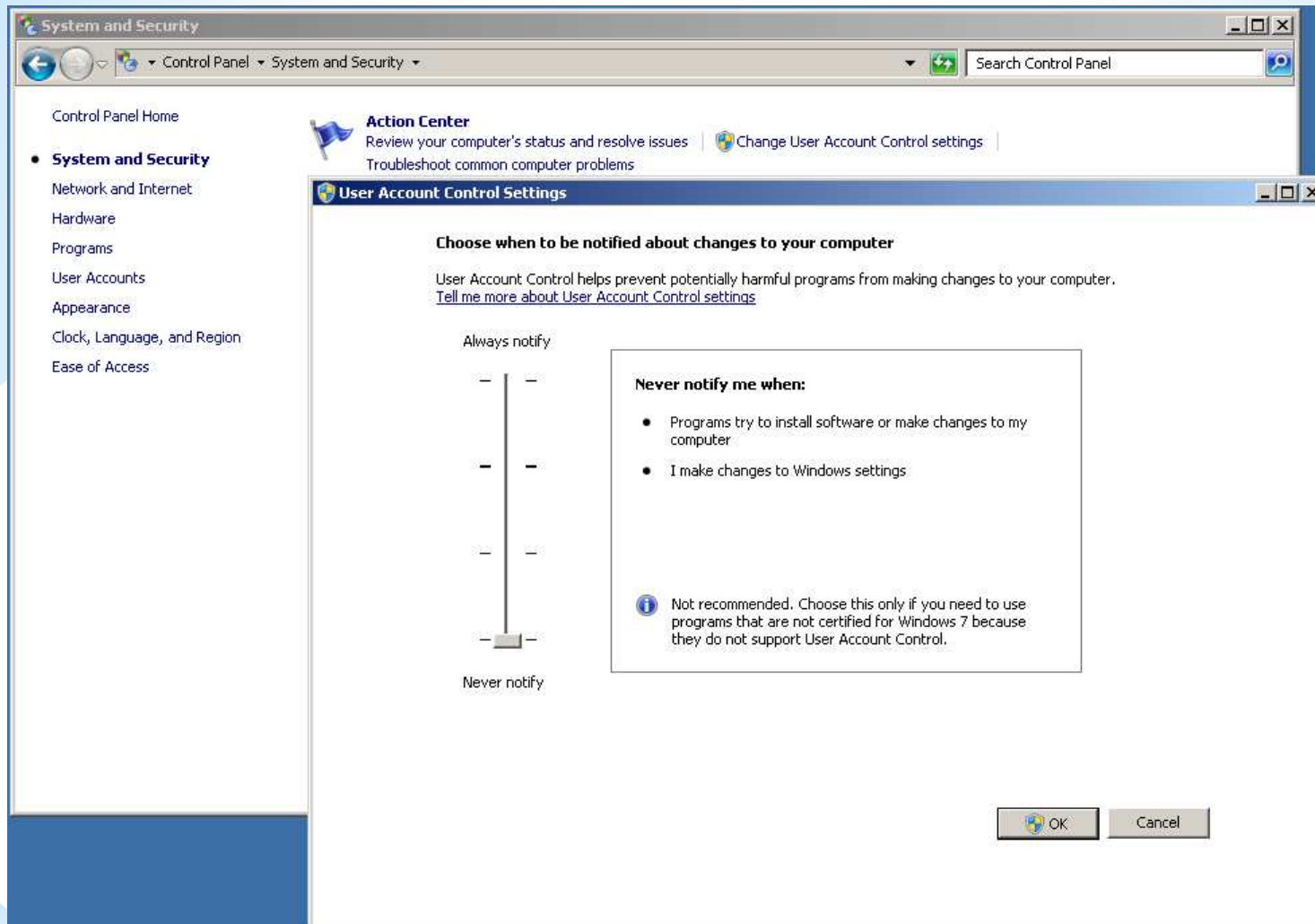
❑ Firewall disable



❑ TSM administrative account

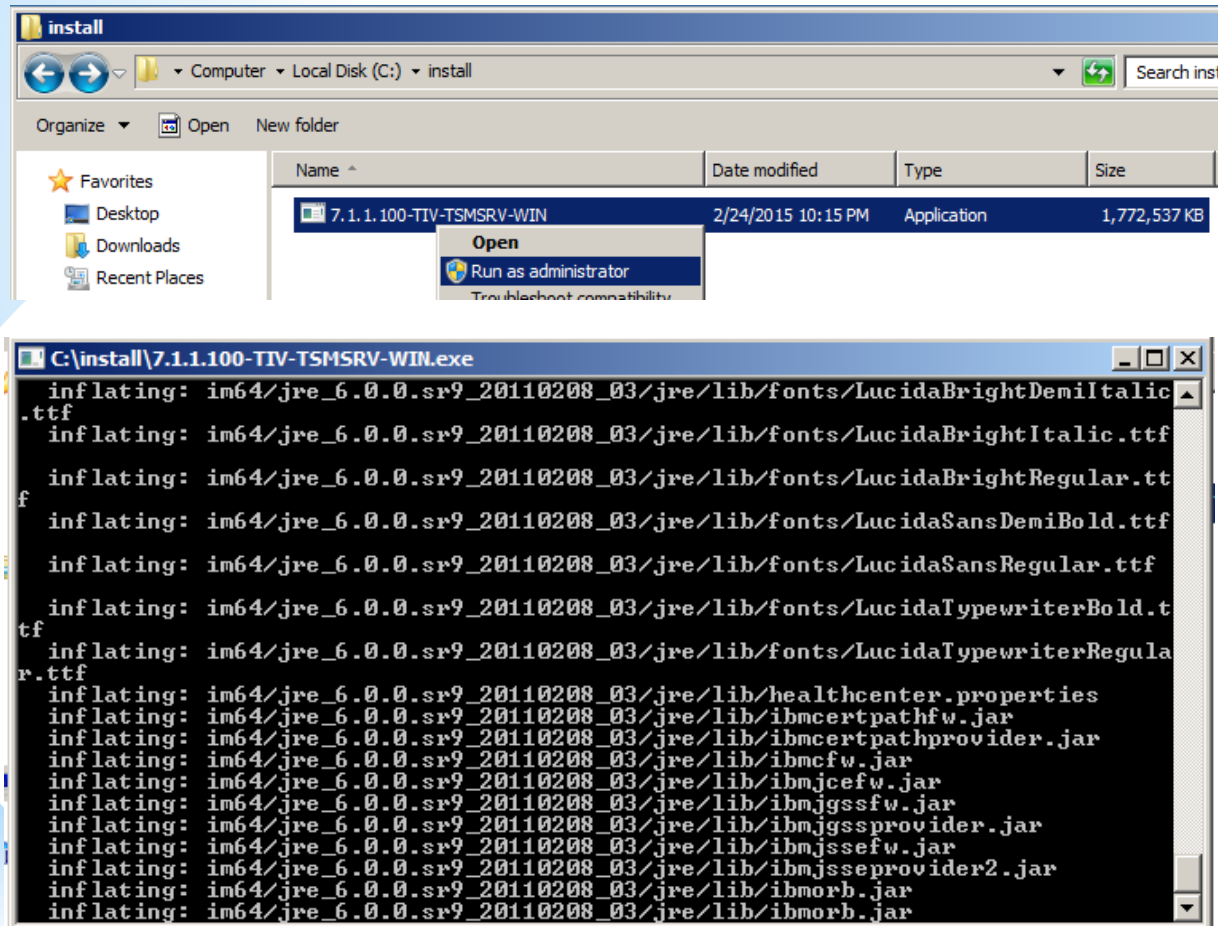


□ UAC disable



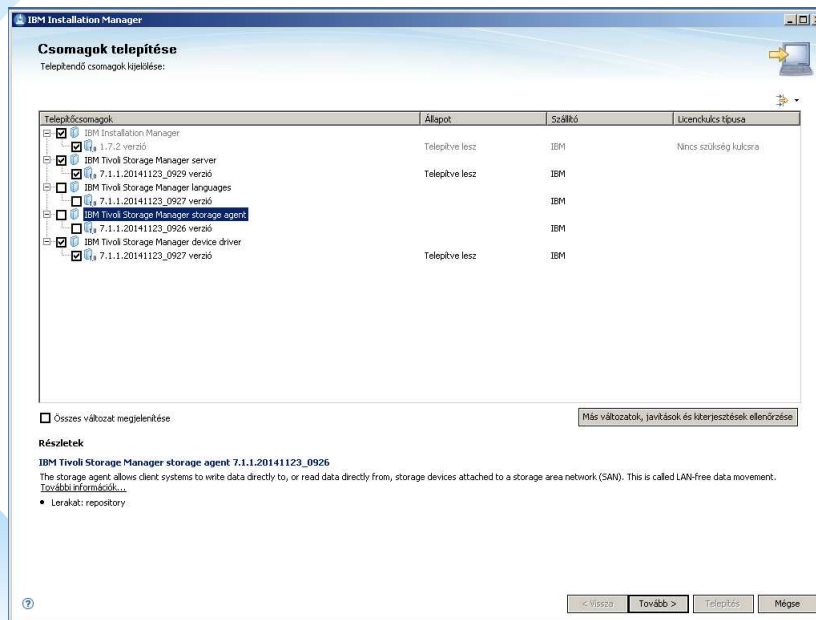
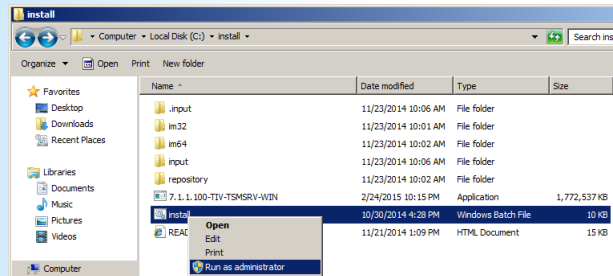
II.2. IBM TSM szerver installációs lépések (1)

Letöltött program indítása, amely kicsomagolja az installációs médiát.

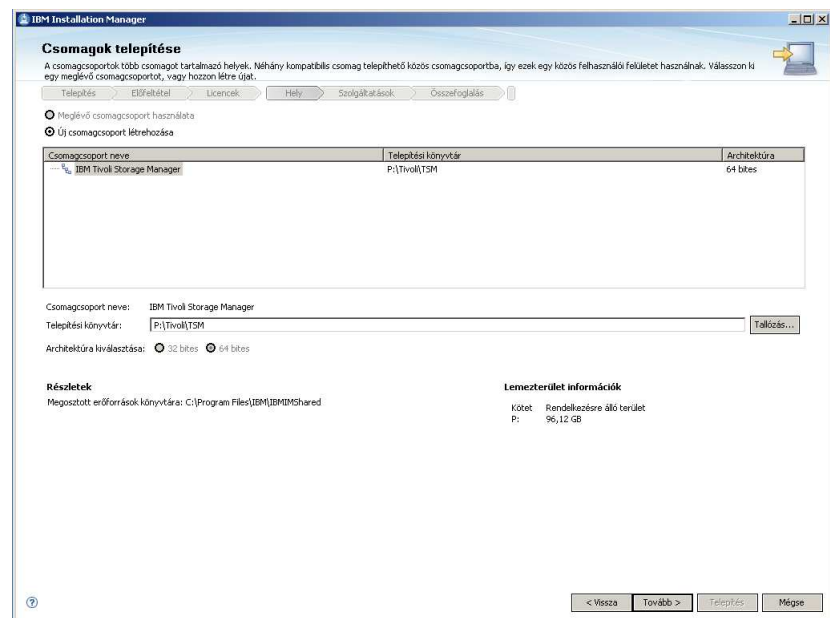
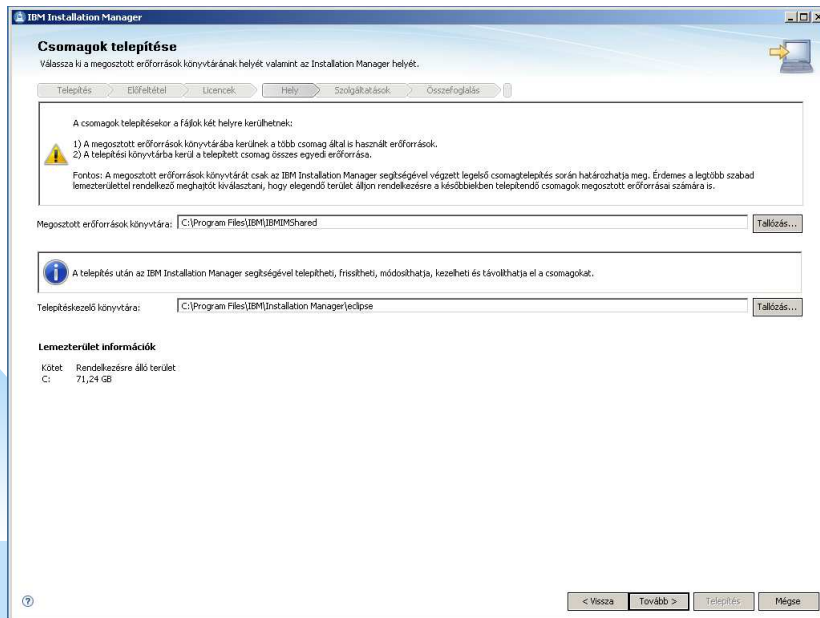
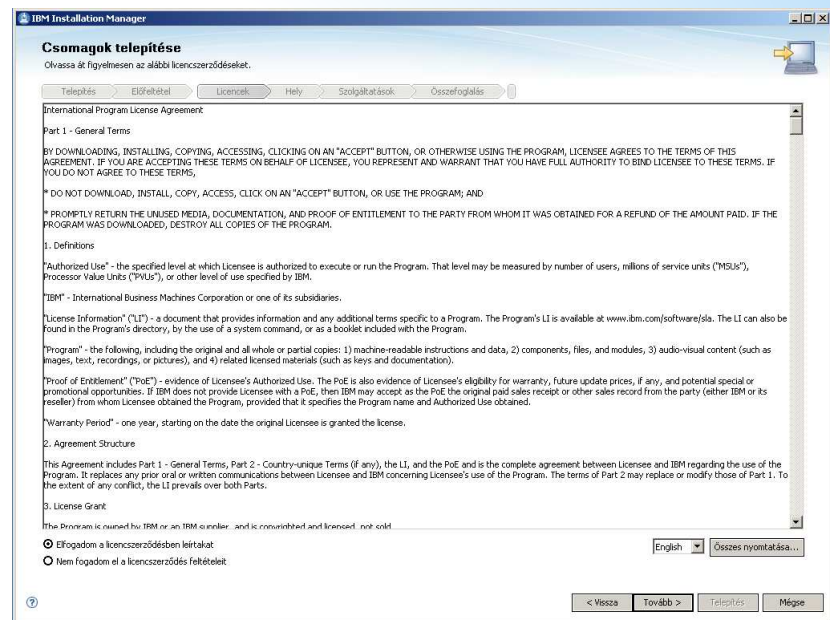
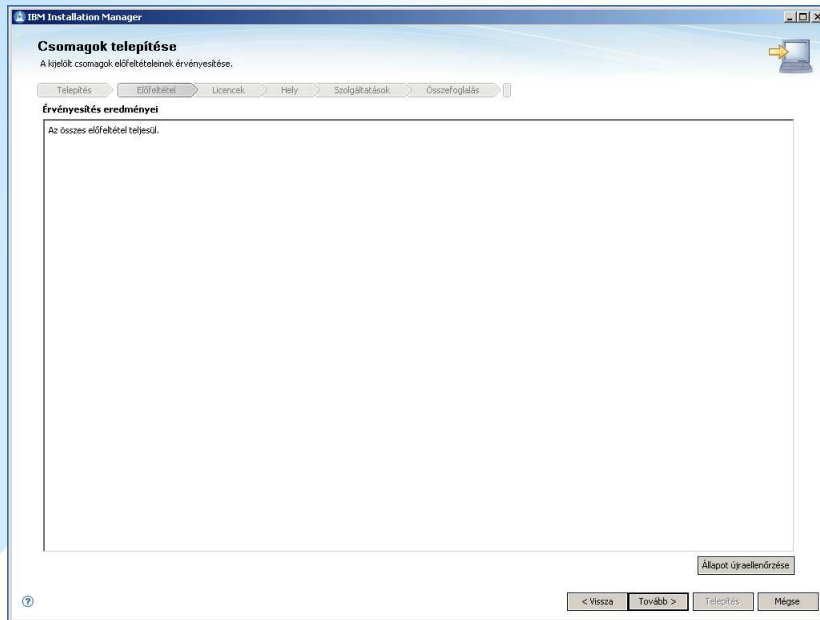


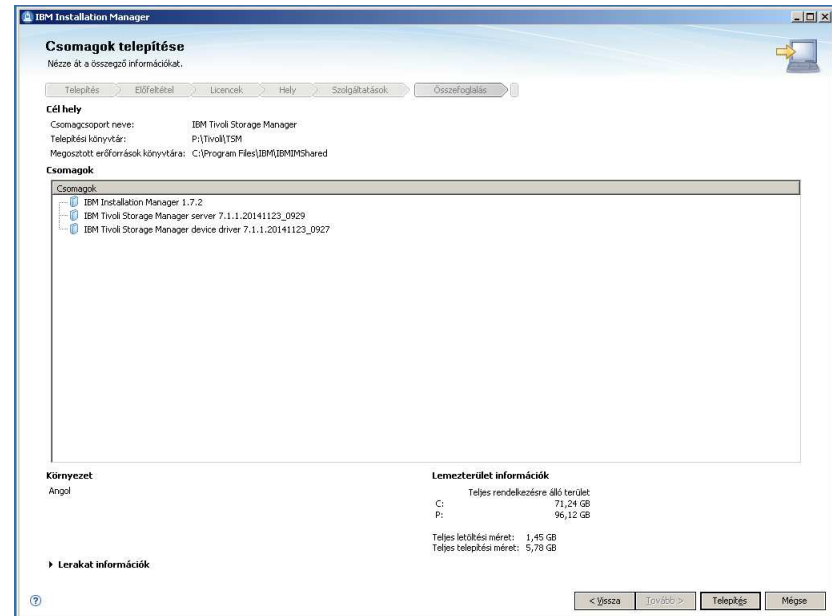
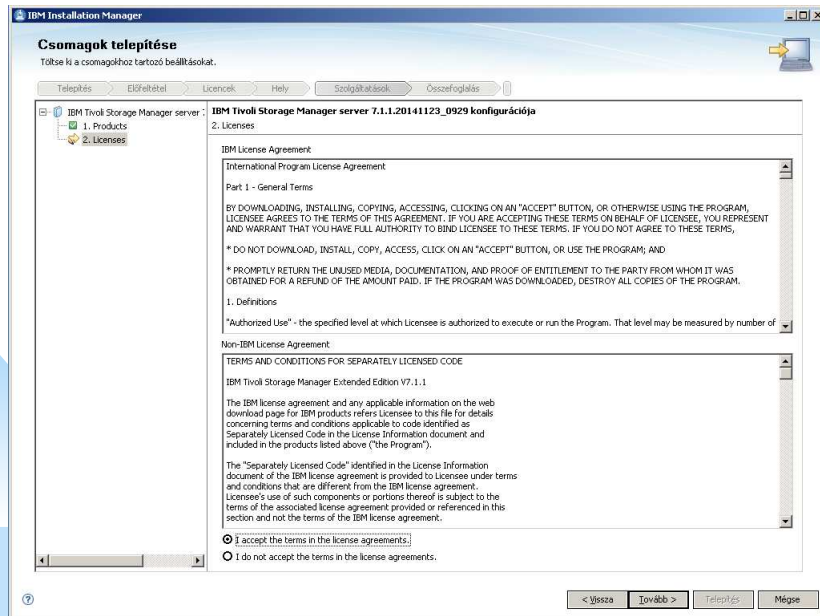
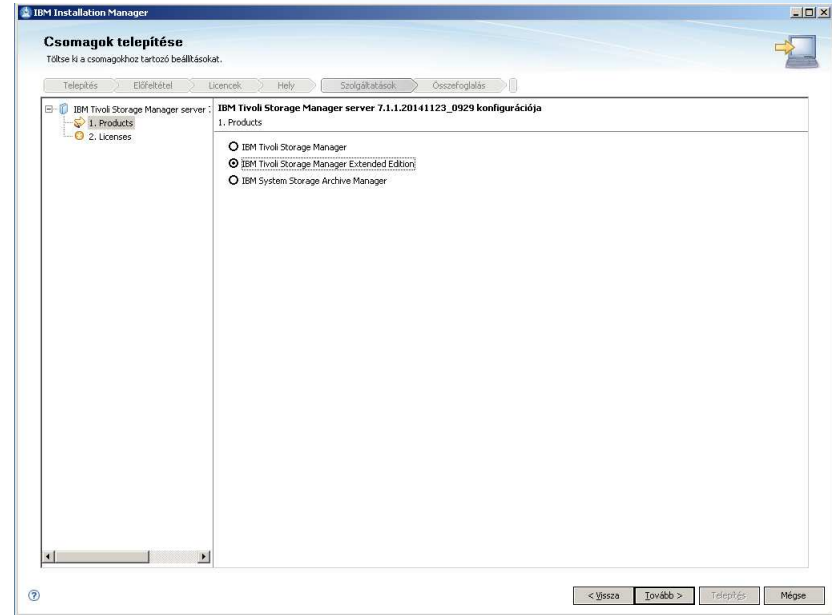
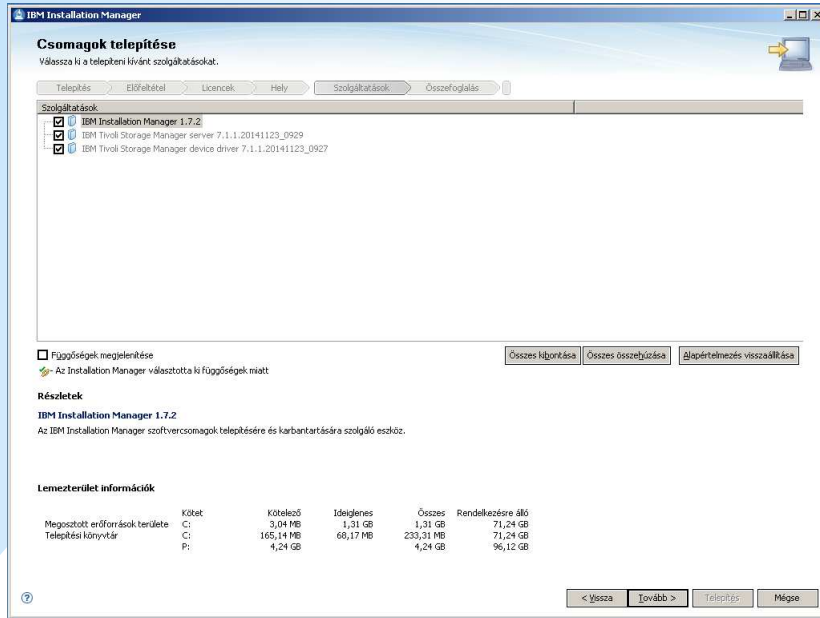
II.3. IBM TSM szerver installációs lépések (2)

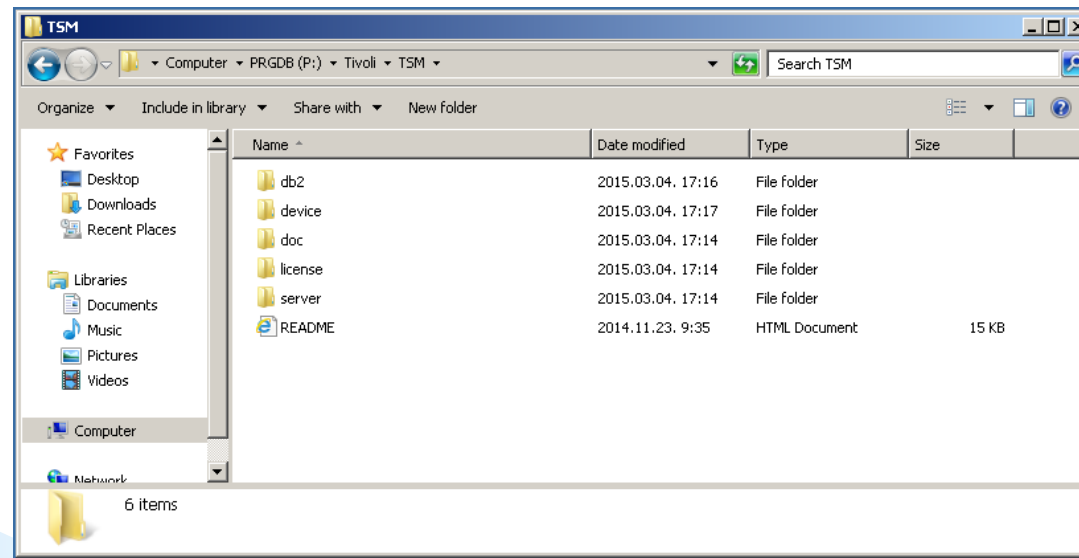
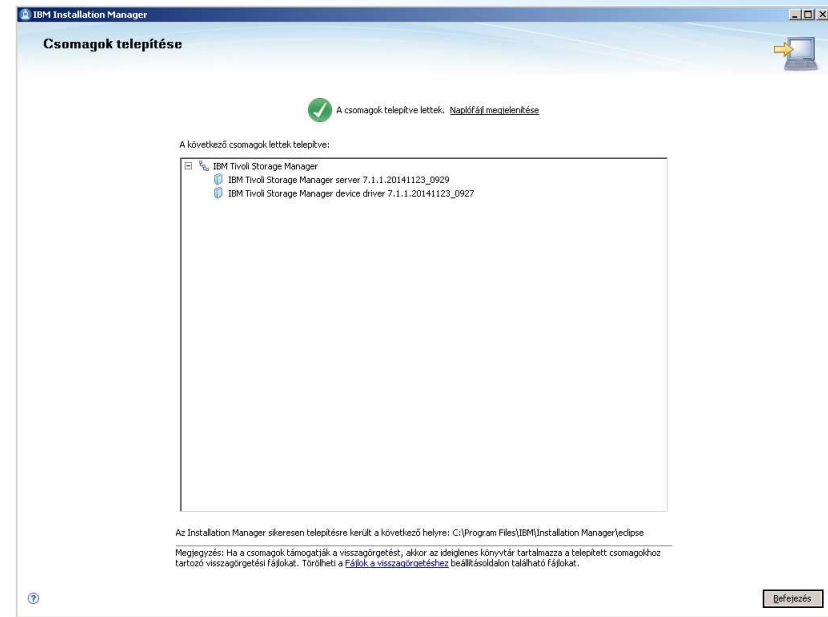
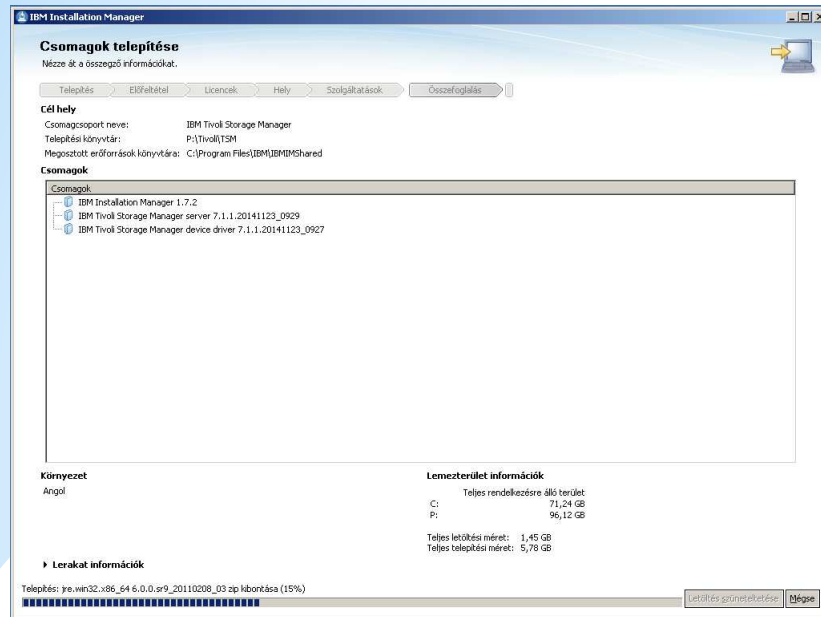
Kicsomagolt install.exe indítása.



Az „IBM Tivoli Storage Manager languages” és „IBM Tivoli Storage Manager storage agent” modulokat nem installáljuk.

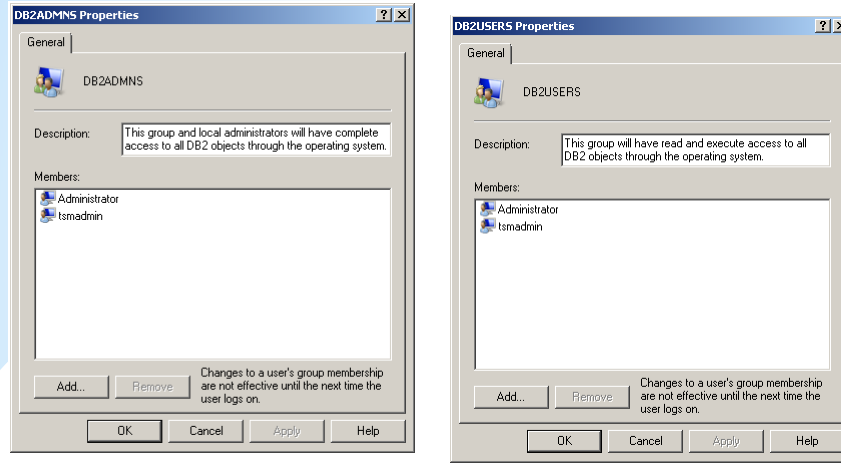






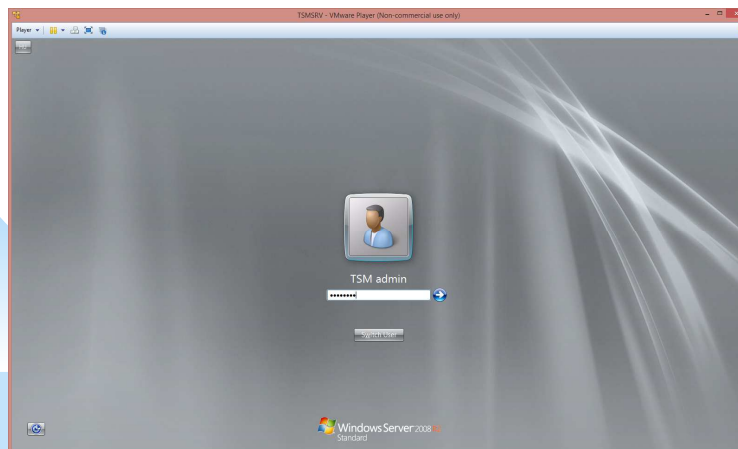
III. IBM TSM szerver instance létrehozása

III.1. Instance létrehozása előtti lépések



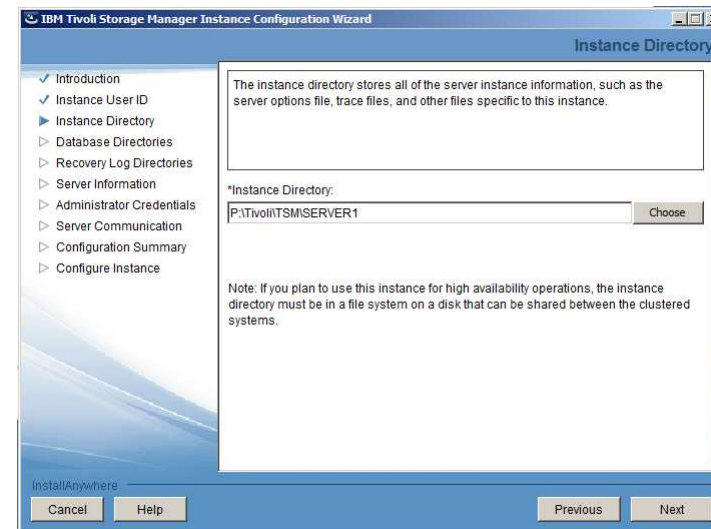
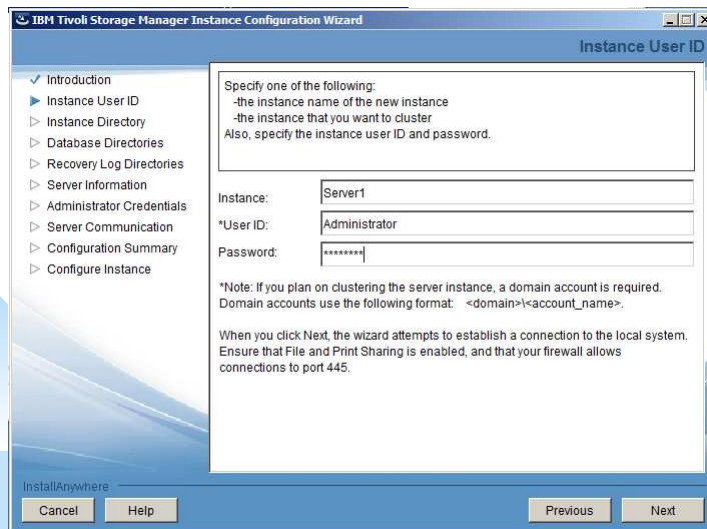
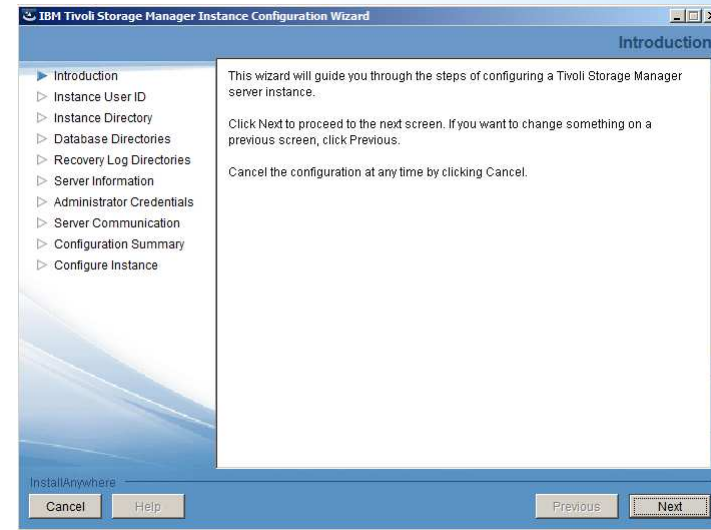
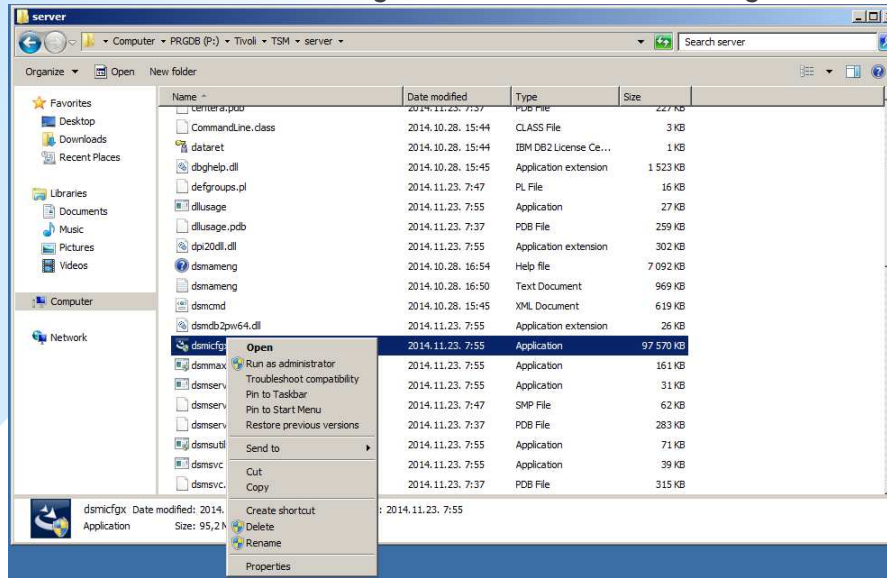
A TSM Server installáció létrehoz két új group-ot az operációs rendszerben, ezekhez adjuk hozzá az „Administrator”-t és a „tsmadmin” user-eket.

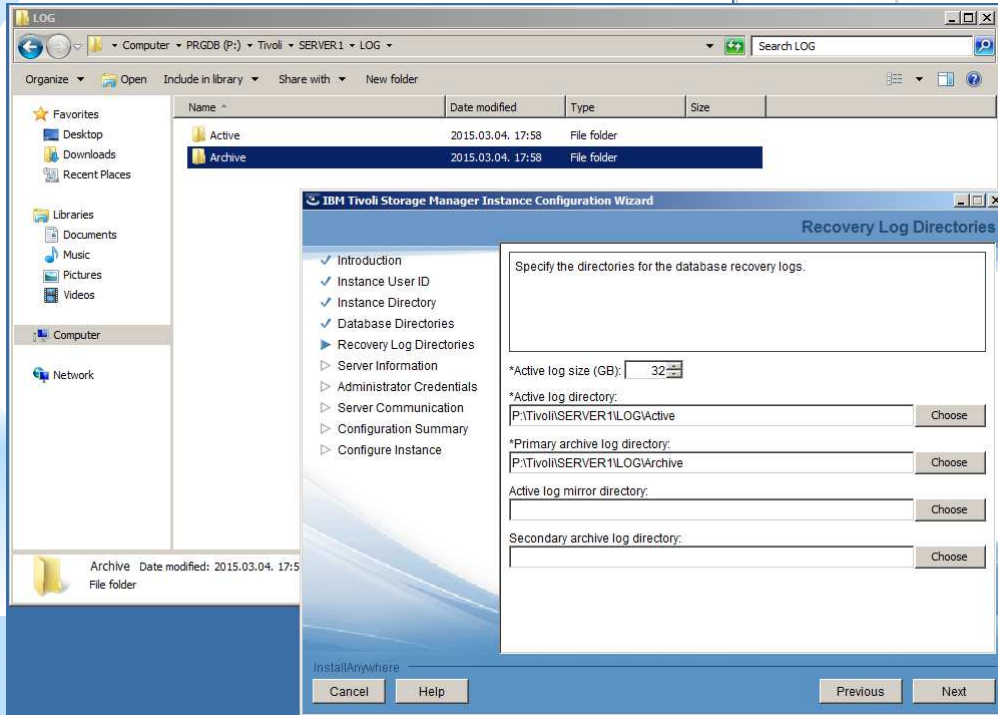
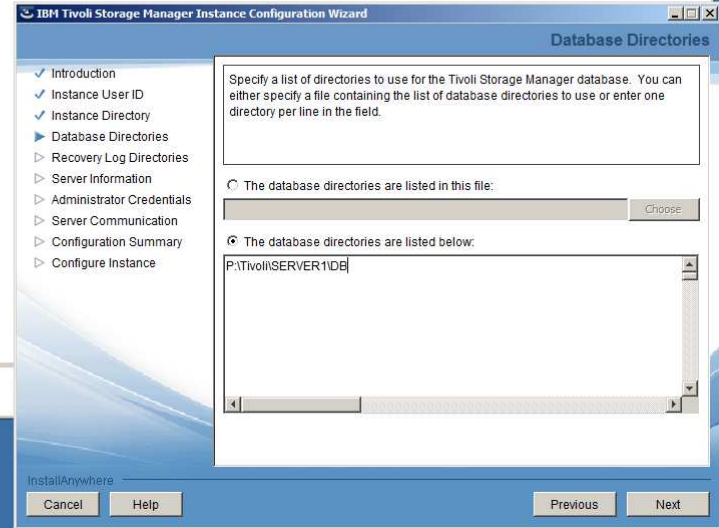
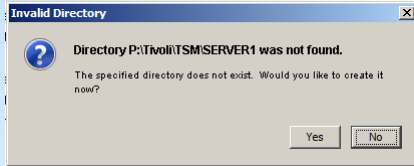
Majd lépünk ki, és lépünk vissza „tsmadmin” user-ként:



III.1. Instance generálása

A P:\Tivoli\TSM\server\dsmicfgx.exe indítása mint rendszergazda:





IBM Tivoli Storage Manager Instance Configuration Wizard

Server Information

- ✓ Introduction
- ✓ Instance User ID
- ✓ Instance Directory
- ✓ Database Directories
- ✓ Recovery Log Directories
- ▶ Server Information
- ▶ Administrator Credentials
- ▶ Server Communication
- ▶ Configuration Summary
- ▶ Configure Instance

Specify configuration information for the server.

*Server Name:
TSMSRV

Server Language:
English

InstallAnywhere

Cancel Help Previous Next

IBM Tivoli Storage Manager Instance Configuration Wizard

Administrator Credentials

- ✓ Introduction
- ✓ Instance User ID
- ✓ Instance Directory
- ✓ Database Directories
- ✓ Recovery Log Directories
- ✓ Server Information
- ▶ Administrator Credentials
- ▶ Server Communication
- ▶ Configuration Summary
- ▶ Configure Instance

Specify a Tivoli Storage Manager Administrator to create when setting up the new instance. You can change the administrator information at any time in the server properties notebook.

*Administrator Name:
tsmadmin

*Administrator Password:

*Verify Administrator Password:

InstallAnywhere

Cancel Help Previous Next

IBM Tivoli Storage Manager Instance Configuration Wizard

Server Communication

- ✓ Introduction
- ✓ Instance User ID
- ✓ Instance Directory
- ✓ Database Directories
- ✓ Recovery Log Directories
- ✓ Server Information
- ✓ Administrator Credentials
- ▶ Server Communication
- ▶ Configuration Summary
- ▶ Configure Instance

The default communication settings for the server are provided for your validation. You can also turn on one or more additional communication methods.

*Client Port: 1500 *Administrator Port: 1500

Enable IPv6 Communication

Enable Shared Memory Communication
Shared Memory Port: 1510

SSL communication requires additional, manual configuration to generate and store the valid certificates that the server accepts.

Enable SSL Communication
SSL Client Port: SSL Administrator Port:

InstallAnywhere

Cancel Help Previous Next

IBM Tivoli Storage Manager Instance Configuration Wizard

Configuration Summary

- ✓ Introduction
- ✓ Instance User ID
- ✓ Instance Directory
- ✓ Database Directories
- ✓ Recovery Log Directories
- ✓ Server Information
- ✓ Administrator Credentials
- ✓ Server Communication
- ▶ Configuration Summary
- ▶ Configure Instance

Review the configuration settings, then click Next.

Instance user ID:
Administrator

Instance directory:
P:\Tivoli\TSM\SERVER1

Database directories:
P:\Tivoli\SERVER1\DB

Active log directory:
P:\Tivoli\SERVER1\LOG\Active

Primary archive log directory:
P:\Tivoli\SERVER1\LOG\Archive

InstallAnywhere

Cancel Help Previous Next

