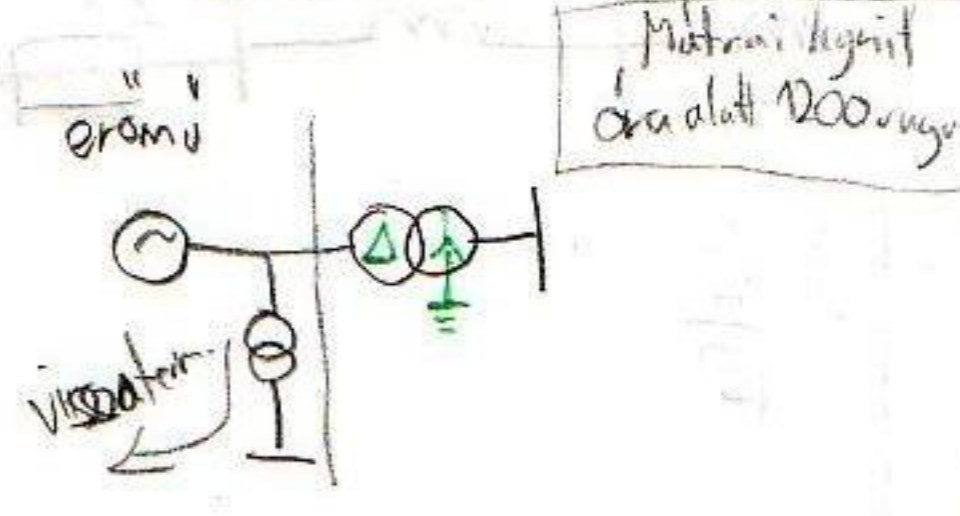
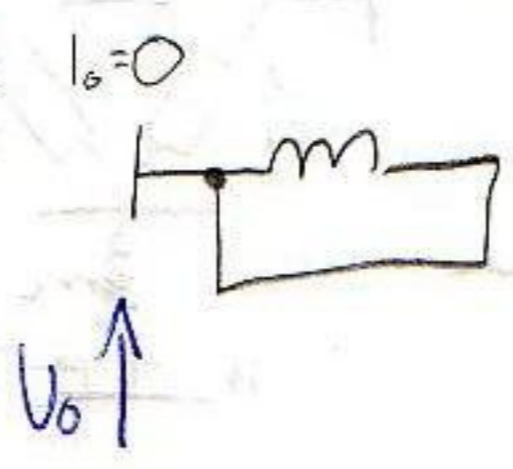
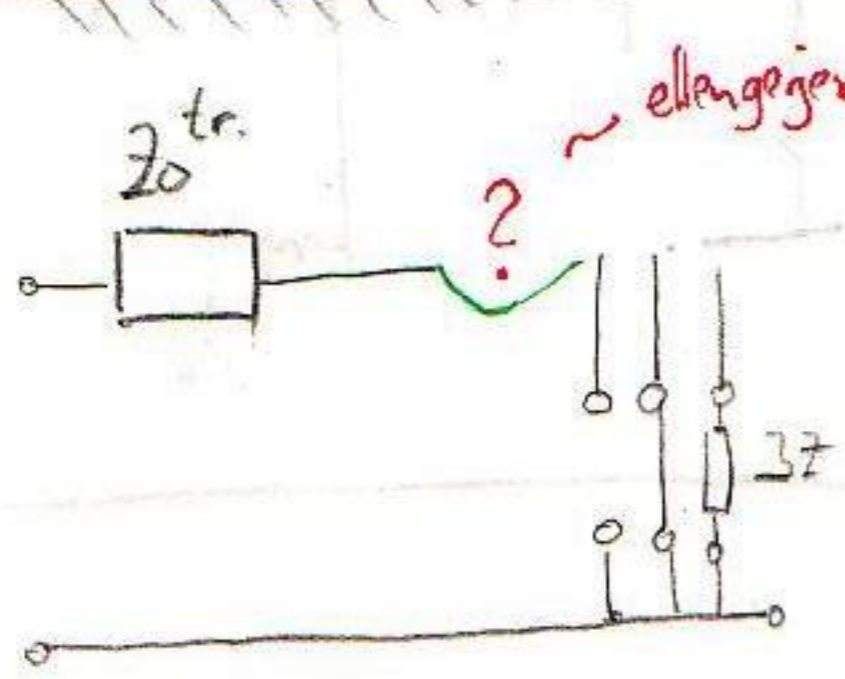
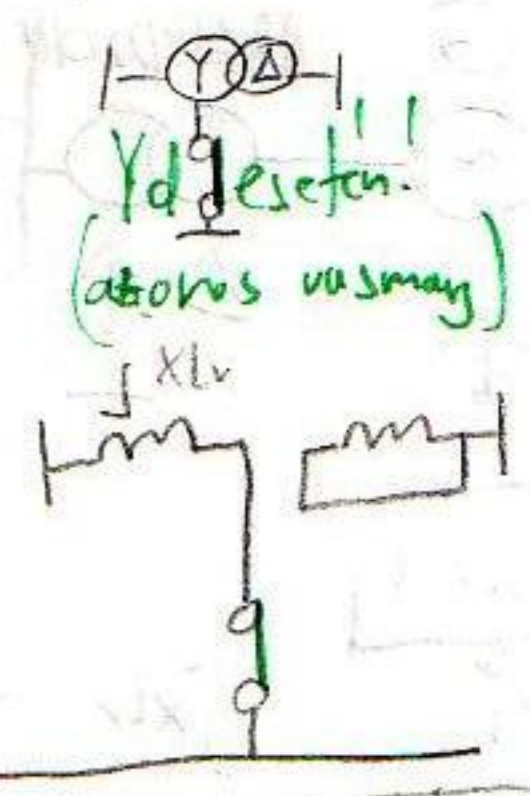
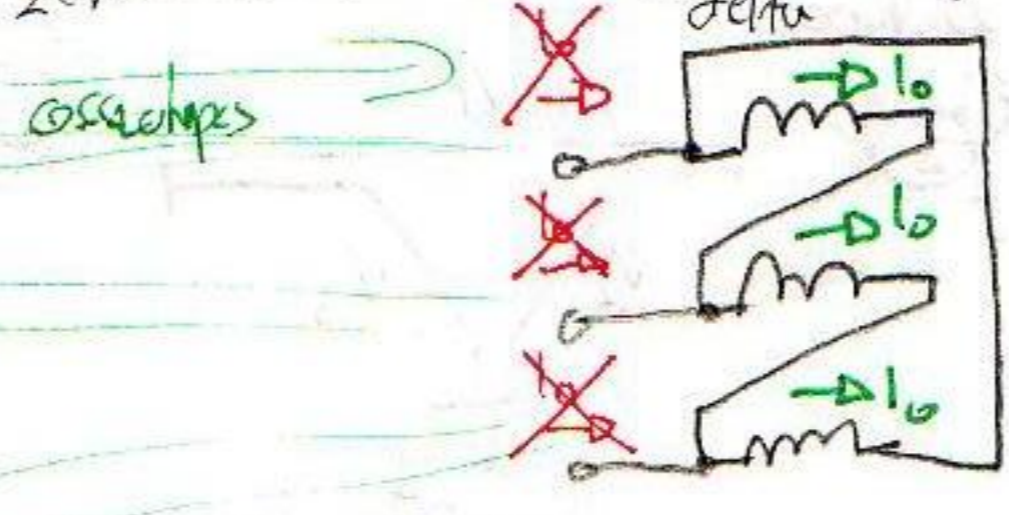
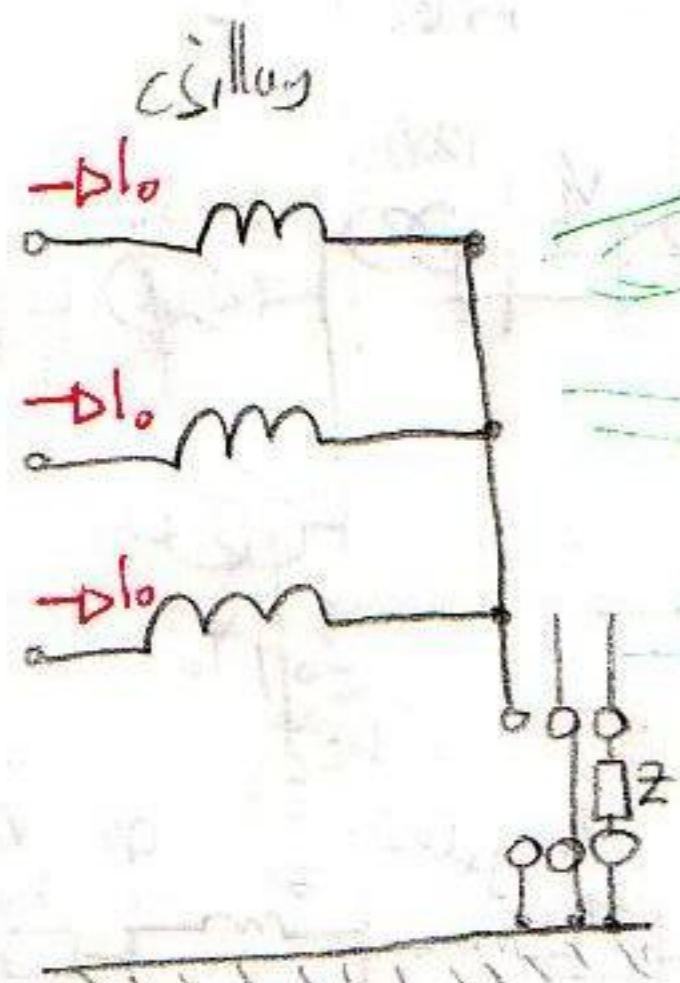


2007.03.29 csütörtök

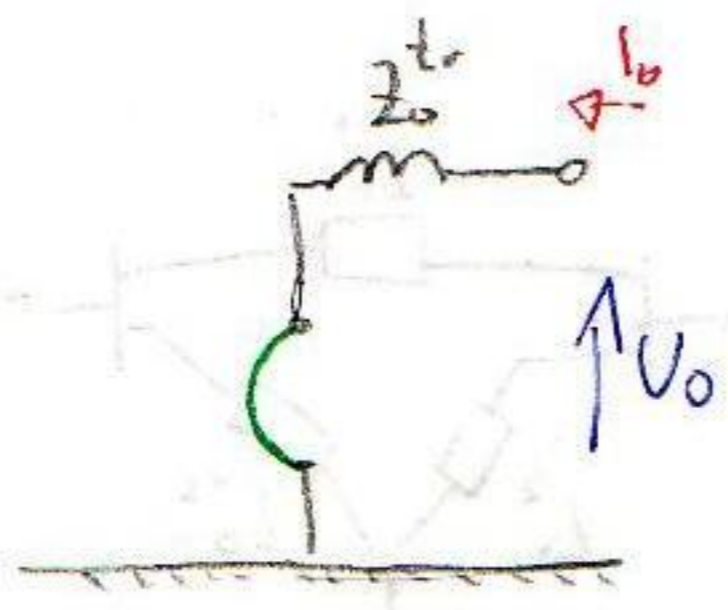
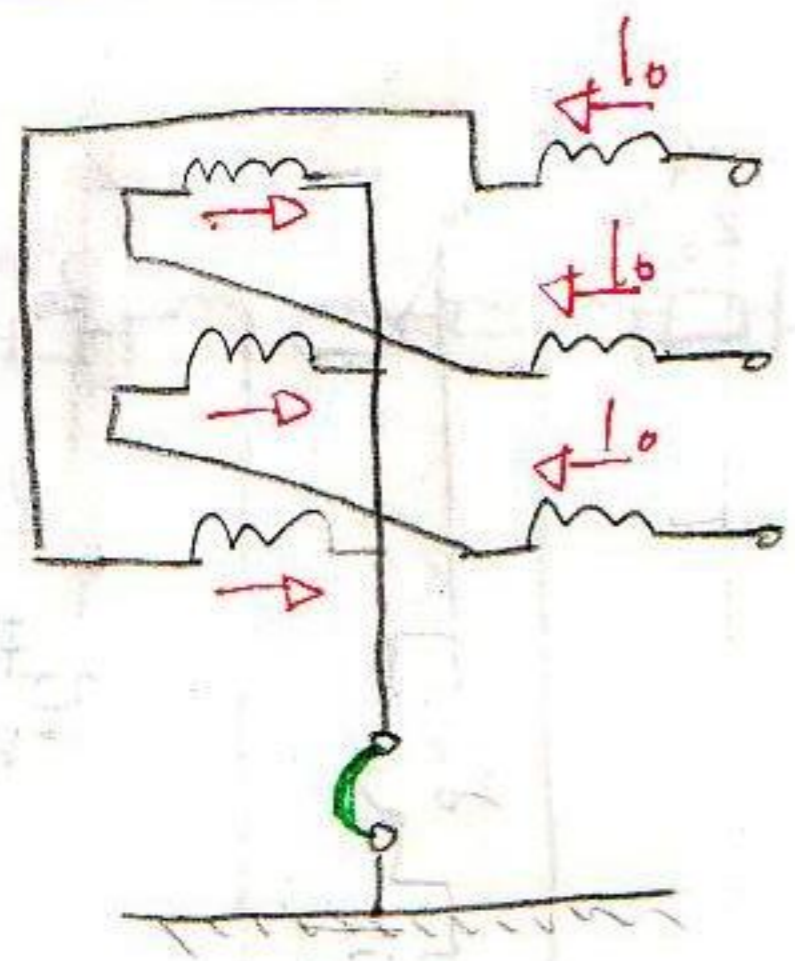
XIII Előadás (7. hét)

Transzformátor zérus sorrendű impedancia

Zérus sorrendű szűkelt, ha CSP nincs összekötve a földdel



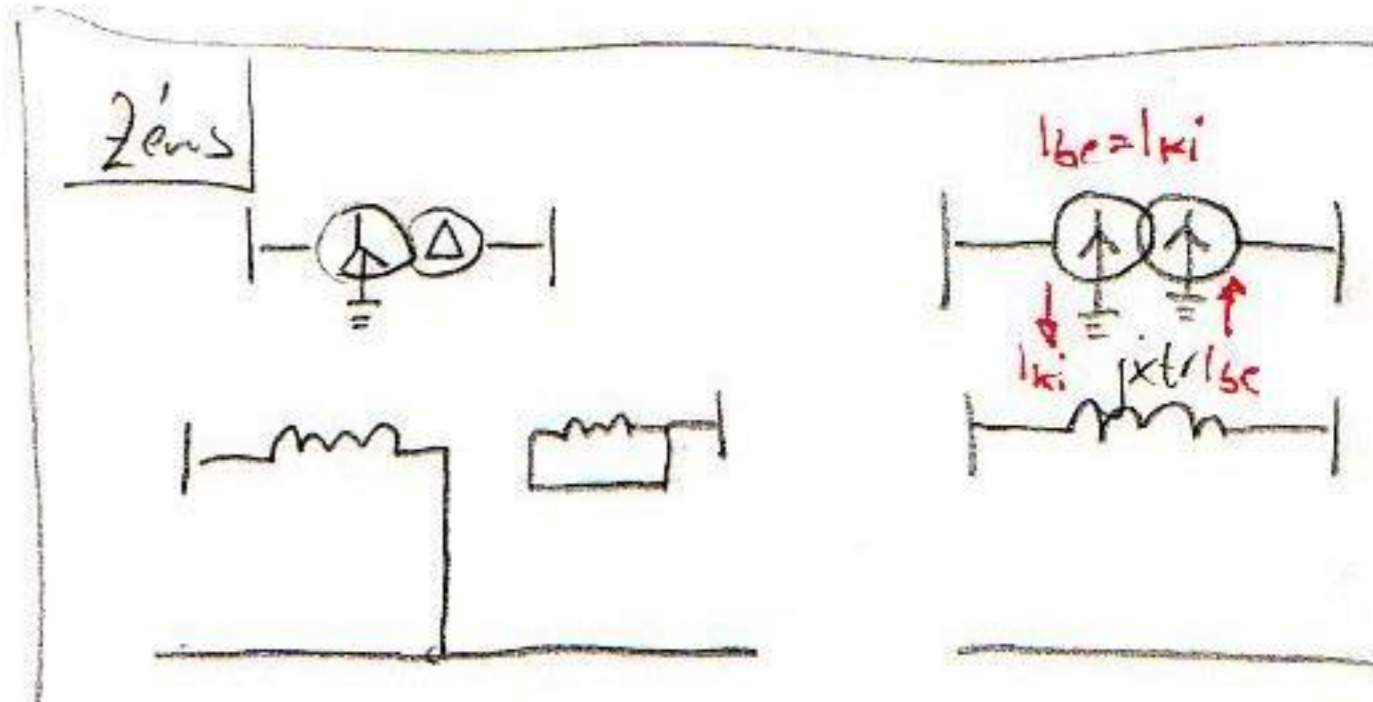
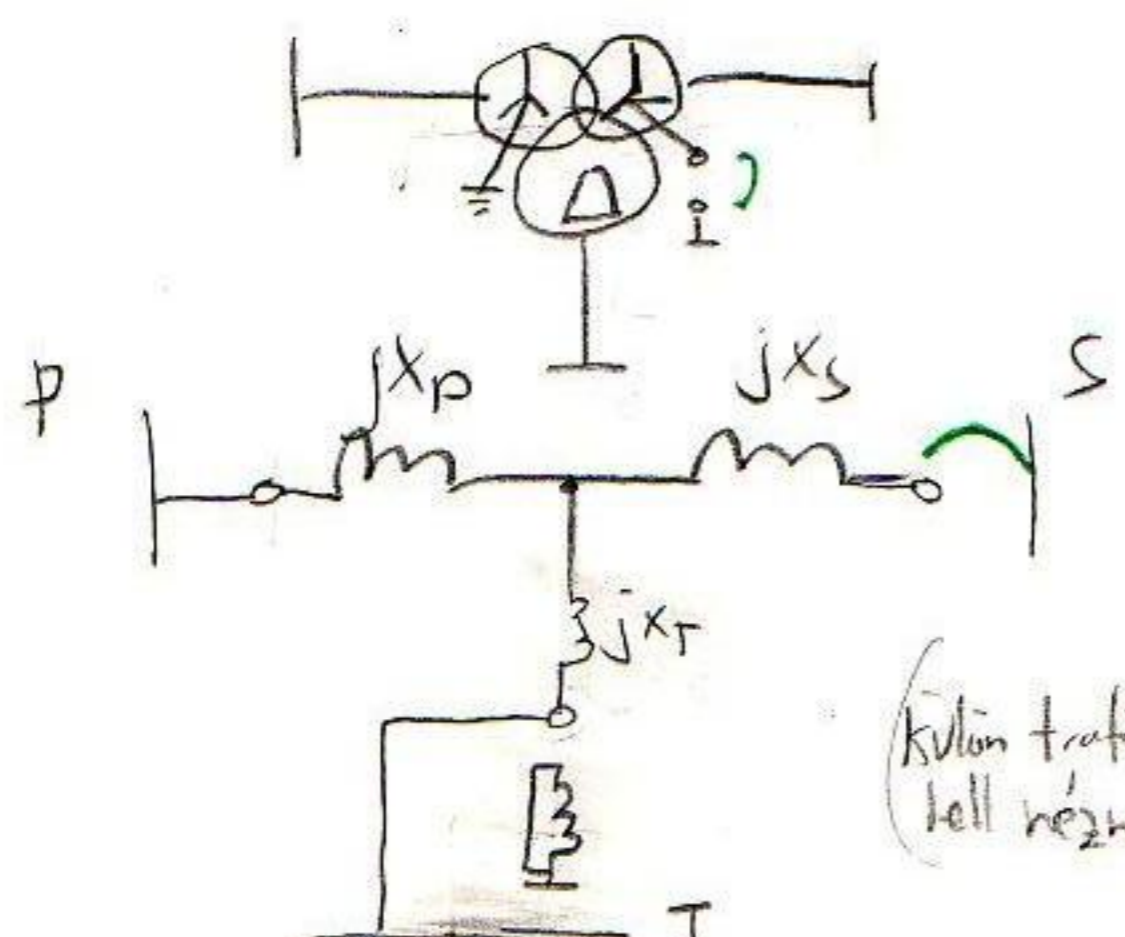
Zug-Zug kapcsolás



3 tekercselésű transzformátor

$$\begin{bmatrix} P \\ S \\ T \end{bmatrix}$$

P: primer
S: szekunder
T: tere

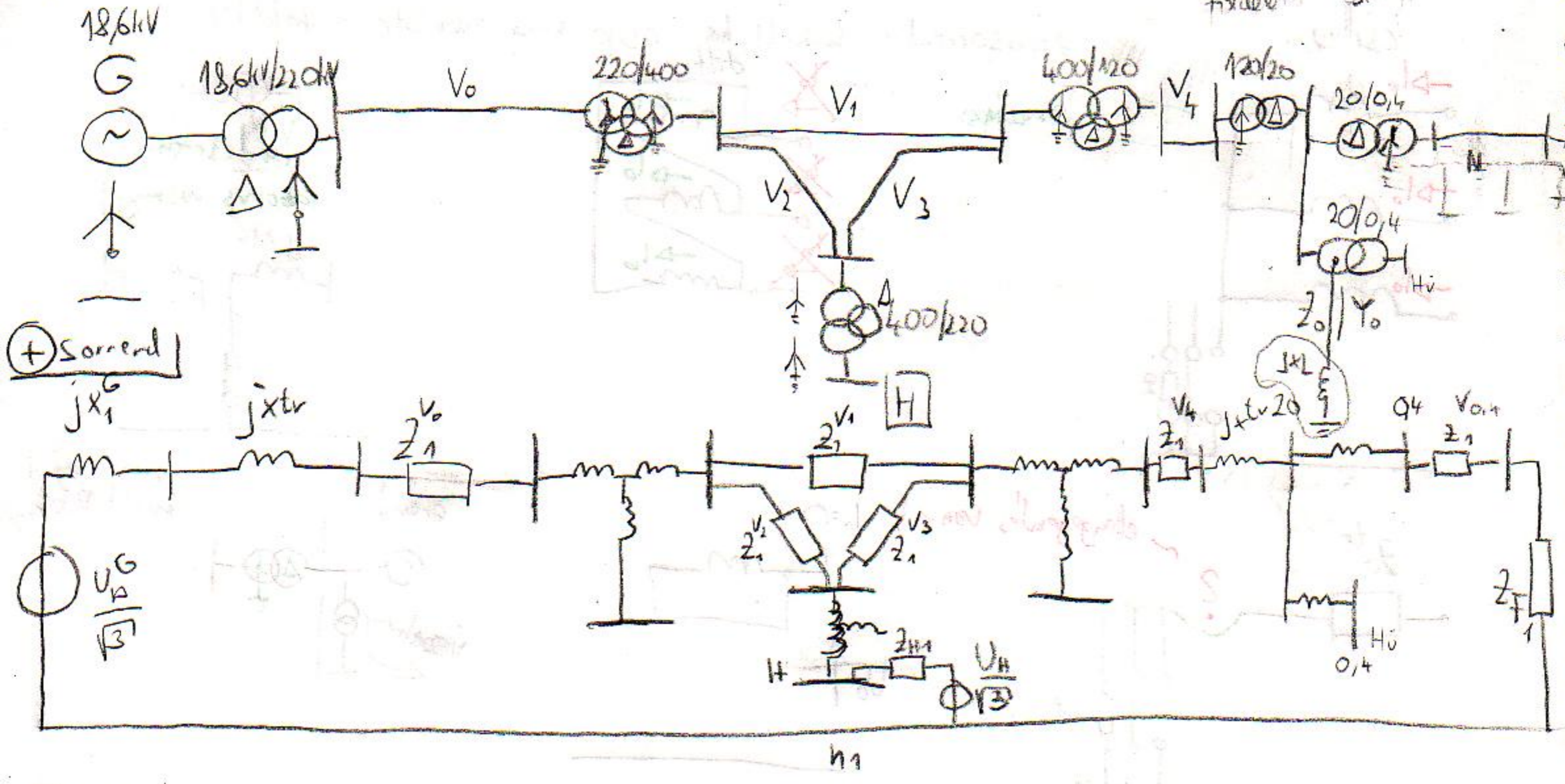


dia vetit: HALÓZATELEMEK HELYE TTESITÉSÉ

11.11.2020

példu (összetett) sorrendi hálózatra Index 1 = poz sorrend...

geleto v1
fidebli csill...



(- sorrend)

U_a (ϕ helyett ; 1-es indexet helyett 2-esre ; Z_{F1} helyett Z_{F2})

(0 sorrend)

