

# SYSTEM-EMD

## User's Manual

### Introduction

- System-EMD is not a trading robot, it's a manual trading system
- It's based on **trend-following** method (longer term)
- Avoids the ranging periods and seeks obvious trends
- Motto 1: „Let the profits run, and trim the losses on time!“
- Motto 2: „Do it simply!“
- Motto 3: „Trend is your friend!“
- Strongly recommended timeframe: **DAILY**
- Pairs: **ANY**
- Takeprofit: no predefined profit target, when the state of indicators is changing
- Stoploss: it's up to you (only for safety)
- Fairly **stressless**

### The contents of the package

#### *Indicators*

- System-EMD
- System-EMD-Multi
- Heiken Ashi
- CandleGame
- TradeInfo

#### *Template*

- SystemEMD

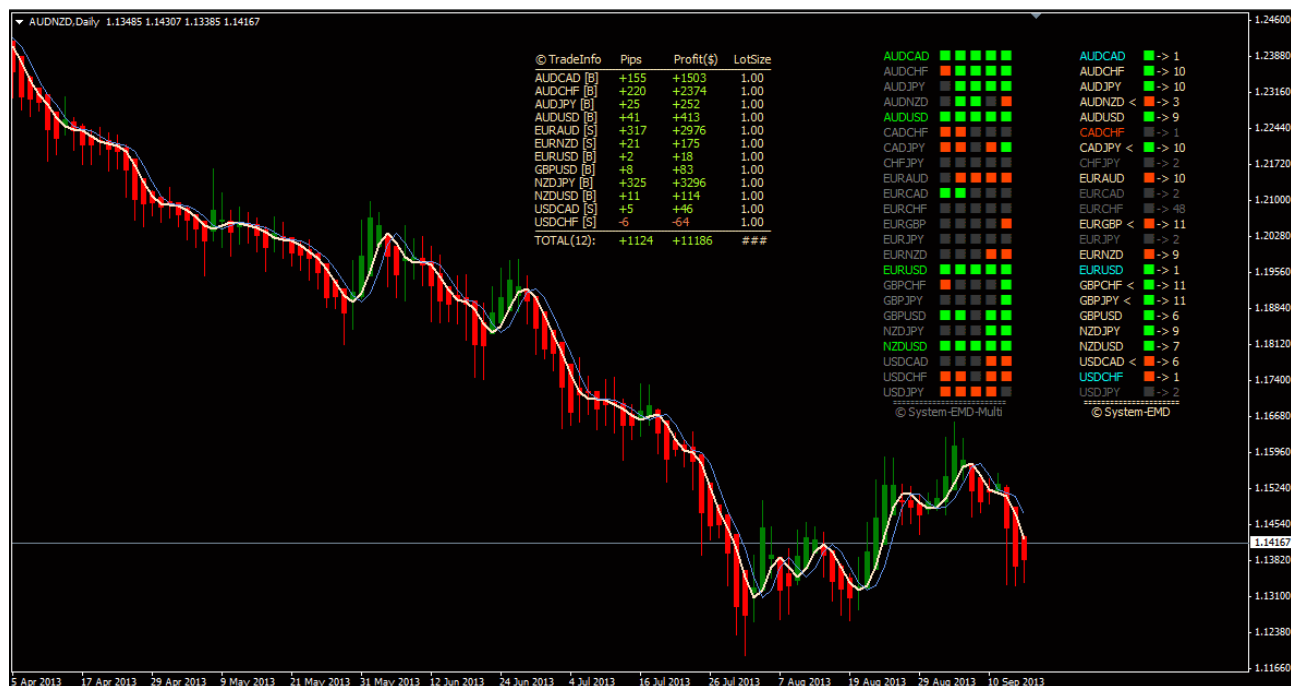
#### *Manual*

- User's Manual pdf file

### Installation

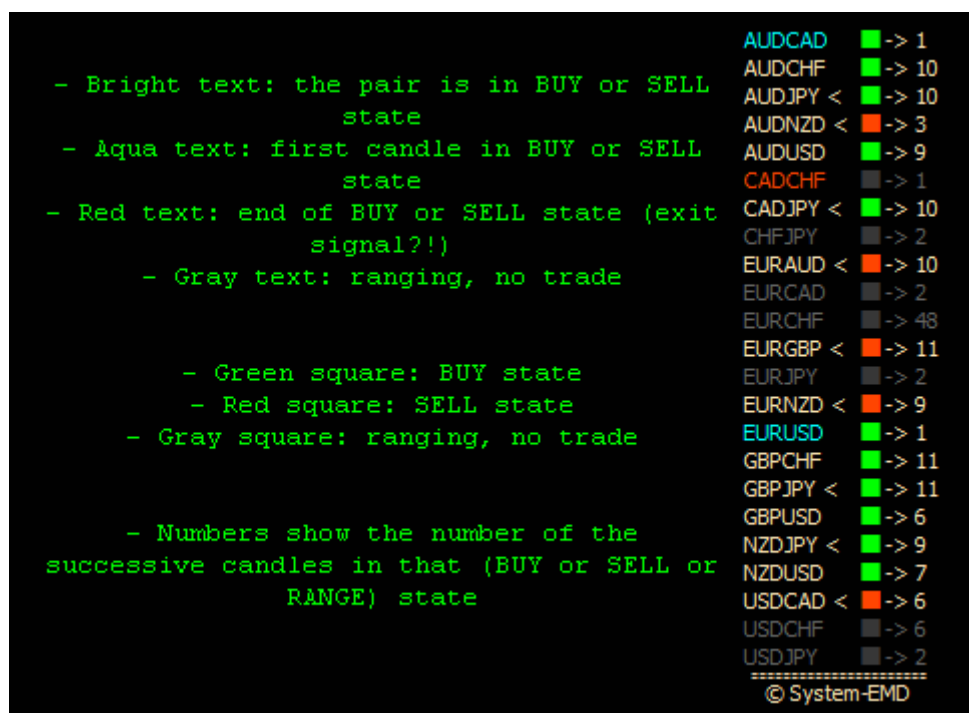
1. Unzip SystemEMD.zip
2. Turn off MetaTrader4
3. Copy indicators (\*.ex4 files) into the <MT4 folder>\experts\indicators folder
4. Copy template (systememd.tpl) into the <MT4 folder>\templates folder
5. Restart MetaTrader4
6. Open a new chart (doesn't matter what pair)
7. Load Systememd template

After installation your chart has look like this:

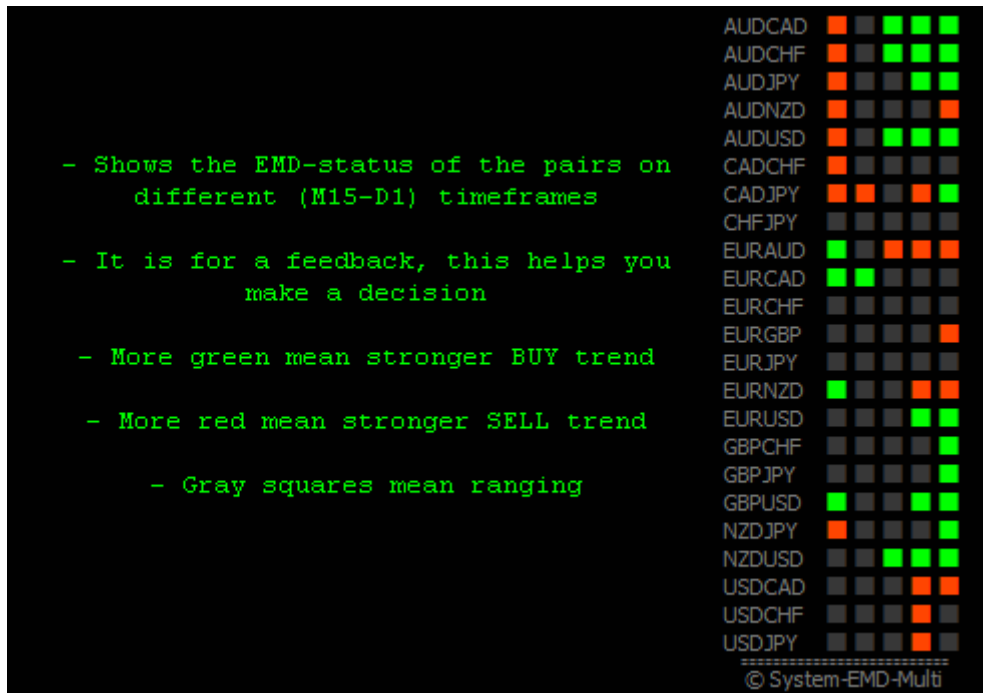


## Indicators

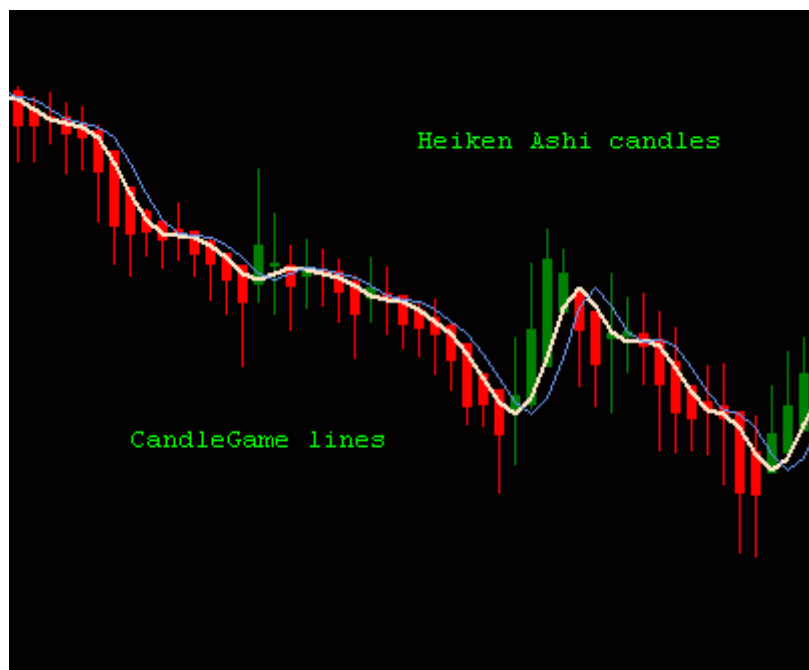
### System-EMD indicator



## System-EMD-Multi indicator



## CandleGame and Heiken Ashi indicators



## TradeInfo indicator

© TradeInfo	Pips	Profit(\$)	LotSize
AUDCAD [B]	+155	+1503	1.00
AUDCHF [B]	+220	+2374	1.00
AUDJPY [B]	+25	+252	1.00
AUDUSD [B]	+41	+413	1.00
EURAUD [S]	+317	+2976	1.00
EURNZD [S]	+21	+175	1.00
EURUSD [B]	+2	+18	1.00
GBPUSD [B]	+8	+83	1.00
NZDJPY [B]	+325	+3296	1.00
NZDUSD [B]	+11	+114	1.00
USDCAD [S]	+5	+46	1.00
USDCHF [S]	-6	-64	1.00
TOTAL(12):	+1124	+11186	###

## Description of trading method

### Entry criteria for BUY:

- System-EMD indicator shows green square
- Current Heiken Ashi candle is green
- CandleGame lines go upward (white line is above blue line)
- System-EMD-Multi indicator shows 3 or more green squares (5 is the best, but not necessary)

### Entry criteria for SELL:

- System-EMD indicator shows red square
- Current Heiken Ashi candle is red
- CandleGame lines go downward (white line is under blue line)
- System-EMD-Multi indicator shows 3 or more red squares (5 is the best, but not necessary)

### Exit for BUY:

- System-EMD indicator turns gray square

or

- Current Heiken Ashi candle turns red

or

- CandleGame lines go downward (white line is under blue line)

This signs may change within a candle, so don't be impatient and close the trade, but control that pair. Don't forget it is a long term trading.

### Exit for SELL:

- System-EMD indicator turns gray square

or

- Current Heiken Ashi candle turns green

or

- CandleGame lines go upward (white line is above blue line)

This signs may change within a candle, so don't be impatient and close the trade, but control that pair. Don't forget it is a long term trading.

**HIGH RISK WARNING:** Foreign exchange trading carries a high level of risk that may not be suitable for all investors. Leverage creates additional risk and loss exposure. Before you decide to trade foreign exchange, carefully consider your investment objectives, experience level, and risk tolerance. You could lose some or all of your initial investment; do not invest money that you cannot afford to lose. Educate yourself on the risks associated with foreign exchange trading, and seek advice from an independent financial or tax advisor if you have any questions.