

SLO-100 SCHEMATIC

PREAMP & POWER AMP

Design: M.J. SOLDANO JR.

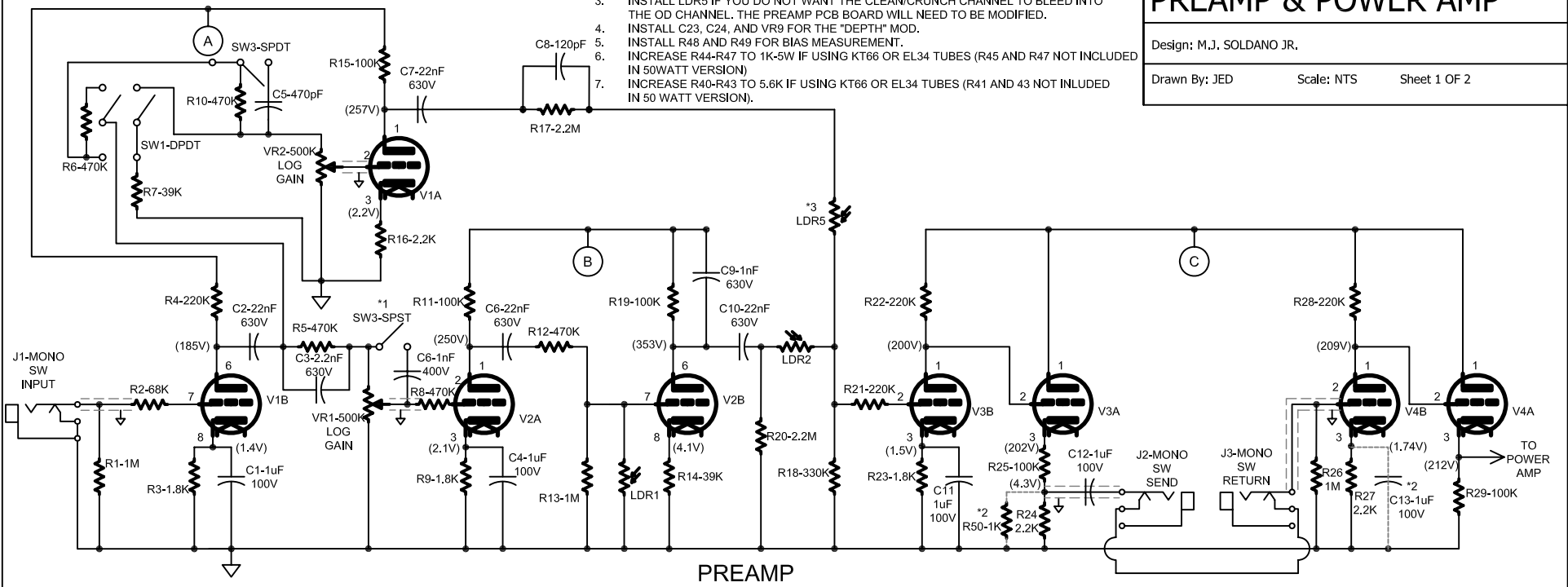
Drawn By: JED

Scale: NTS

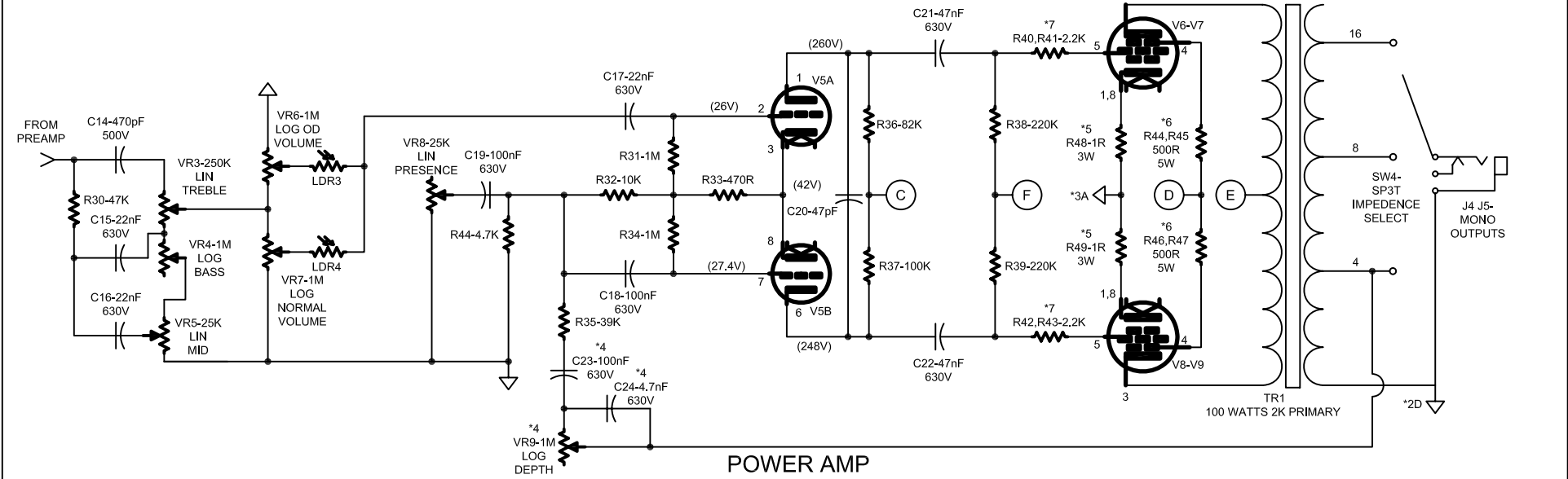
Sheet 1 OF 2

*NOTES

1. INSTALL SWITCH 3 FOR "WARREN HAYNES" MOD.
2. INSTALL C13 AND R50 TO REDUCE SEND LEVEL TO 0dB.
3. INSTALL LDR5 IF YOU DO NOT WANT THE CLEAN/CRUNCH CHANNEL TO BLEED INTO THE OD CHANNEL. THE PREAMP PCB BOARD WILL NEED TO BE MODIFIED.
4. INSTALL C23, C24, AND VR9 FOR THE "DEPTH" MOD.
5. INSTALL R48 AND R49 FOR BIAS MEASUREMENT.
6. INCREASE R44-R47 TO 1K-5W IF USING KT66 OR EL34 TUBES (R45 AND R47 NOT INCLUDED IN 50 WATT VERSION).
7. INCREASE R40-R43 TO 5.6K IF USING KT66 OR EL34 TUBES (R41 AND 43 NOT INCLUDED IN 50 WATT VERSION).



PREAMP



POWER AMP

