

General Info

Bamako, MLI

N 12° 32.3' W 07° 56.6' Mag Var: 6.3°W

Elevation: 1247'

Public, IFR, Control Tower, Customs, Landing Fee

Fuel: 100LL, Jet A-1

Time Zone Info: GMT no DST

Runway Info

Runway 06-24 8858' x 148' concrete

Runway 06 (62.0°M) TDZE 1187'

Lights: Edge, ALS

Right Traffic

Stopway Distance 328'

Runway 24 (242.0°M) TDZE 1247'

Lights: Edge

Stopway Distance 328'

Communications Info

Bamako Tower 118.3

Notebook Info

GABS/BKO
SENOU

JEPPESEN
13 APR 07 10-2

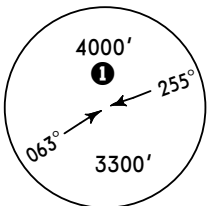
BAMAKO, MALI
STAR

Apt Elev
1247'

Alt Set: hPa

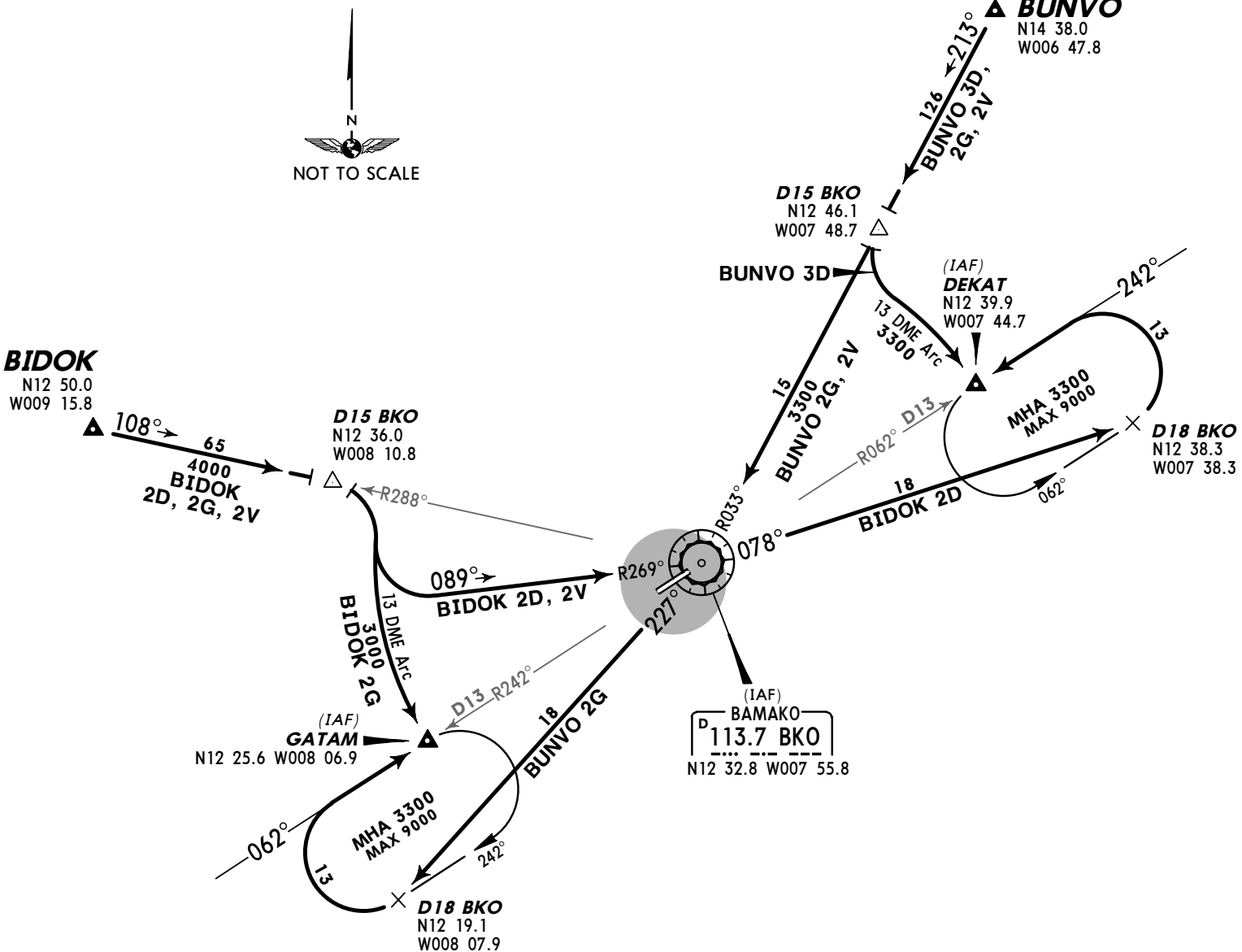
Trans level: By ATC

Trans alt: 3300'



MSA
BKO VOR
1 within 13 NM
3300'

BIDOK 2D [BIDO2D], BUNVO 3D [BUNV3D]
RWY 24 ARRIVALS
BIDOK 2G [BIDO2G], BUNVO 2G [BUNV2G]
RWY 06 ARRIVALS
BIDOK 2V [BIDO2V], BUNVO 2V [BUNV2V]
RWYS 24, 06 ARRIVALS



GABS/BKO
SENOU

JEPPESSEN
13 APR 07 **10-2A**

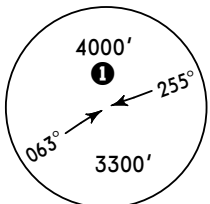
BAMAKO, MALI
STAR

Apt Elev
1247'

Alt Set: hPa

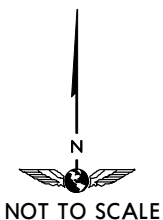
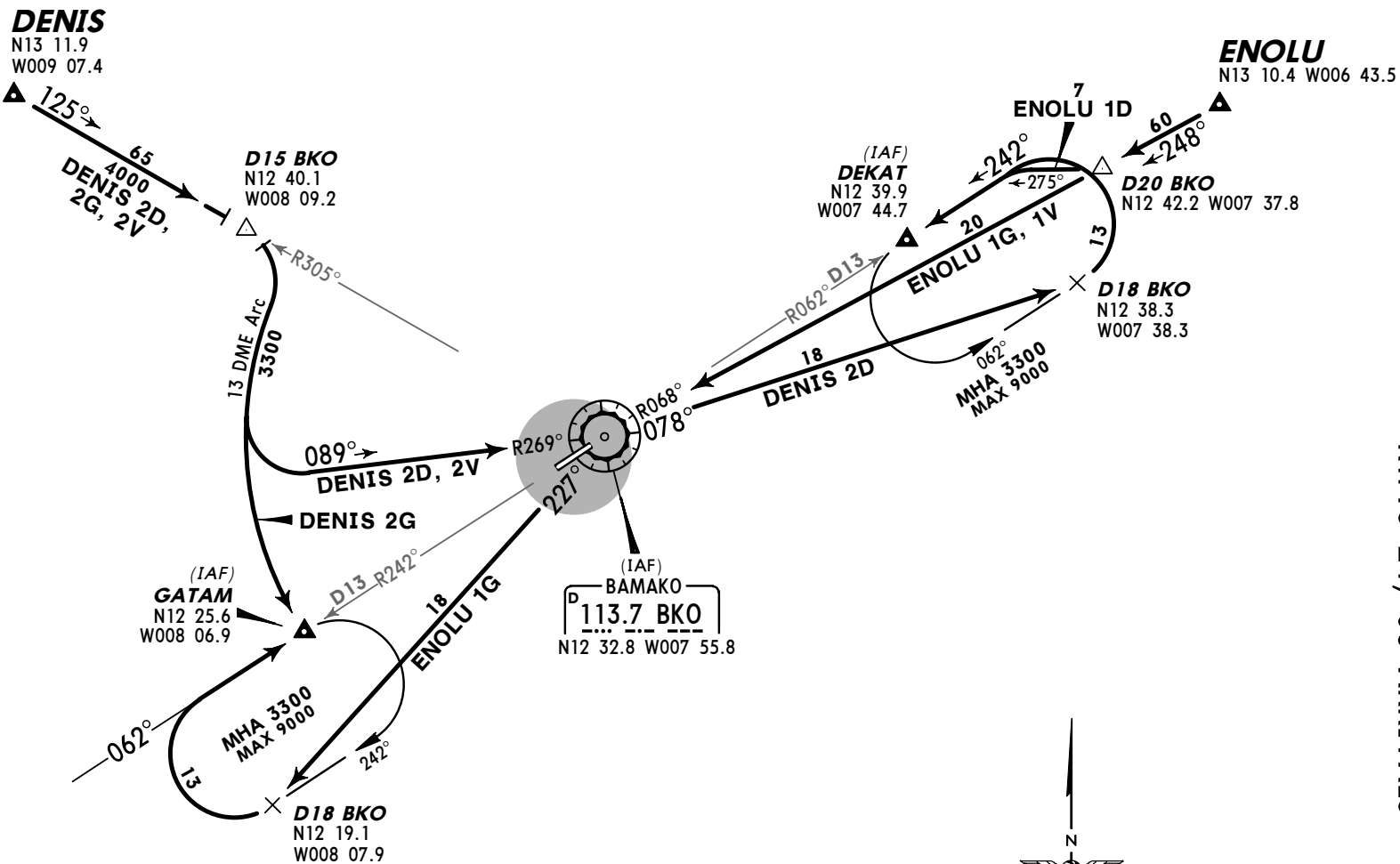
Trans level: By ATC

Trans alt: 3300'



MSA
BKO VOR
① within 13 NM
3300'

DENIS 2D [DENI2D], ENOLU 1D [ENOL1D]
RWY 24 ARRIVALS
DENIS 2G [DENI2G], ENOLU 1G [ENOL1G]
RWY 06 ARRIVALS
DENIS 2V [DENI2V], ENOLU 1V [ENOL1V]
RWYS 24, 06 ARRIVALS



STAR

4000'

①

255°

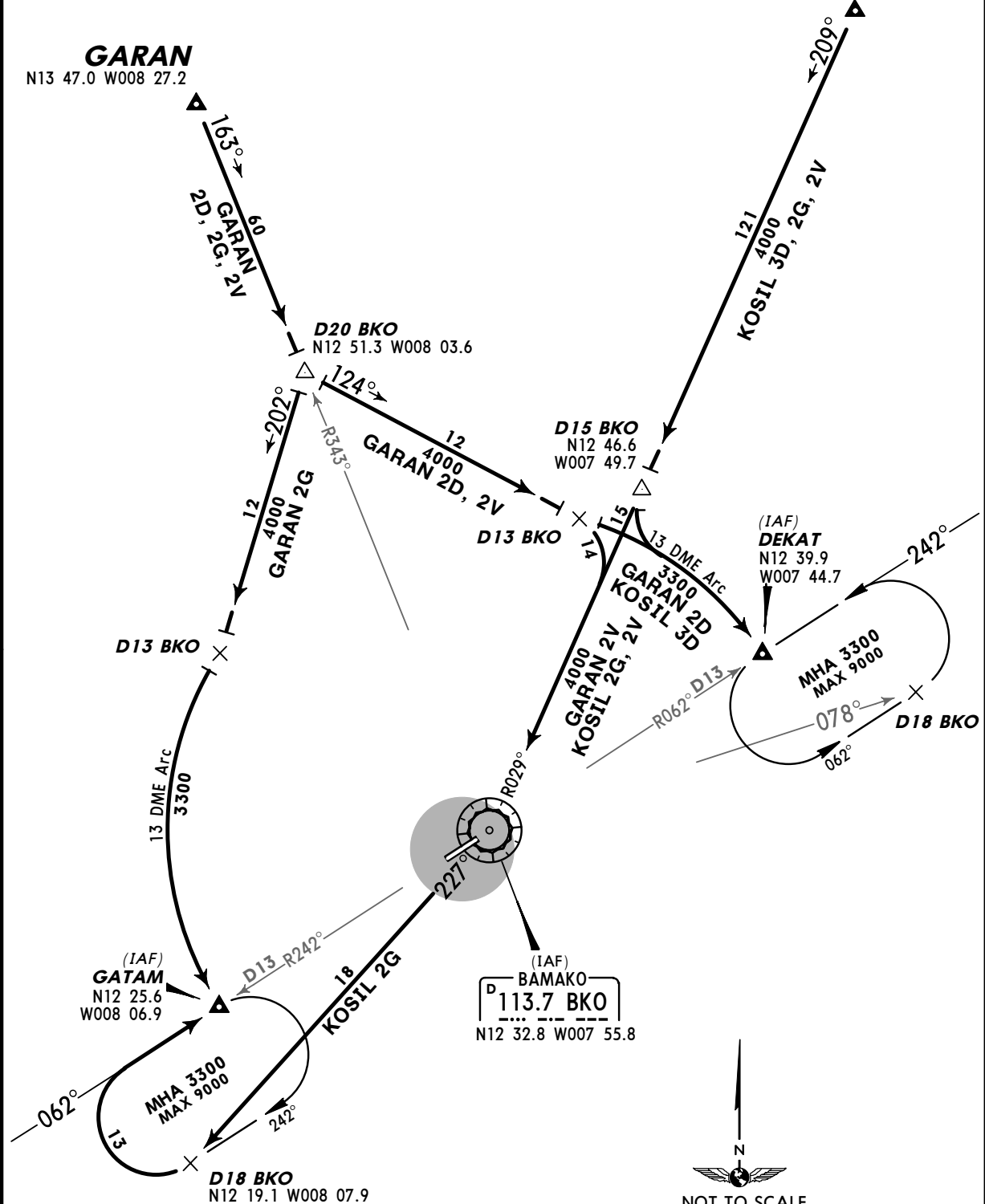
063°

3300'

MSA
BKO VOR

① within 13 NM
3300'


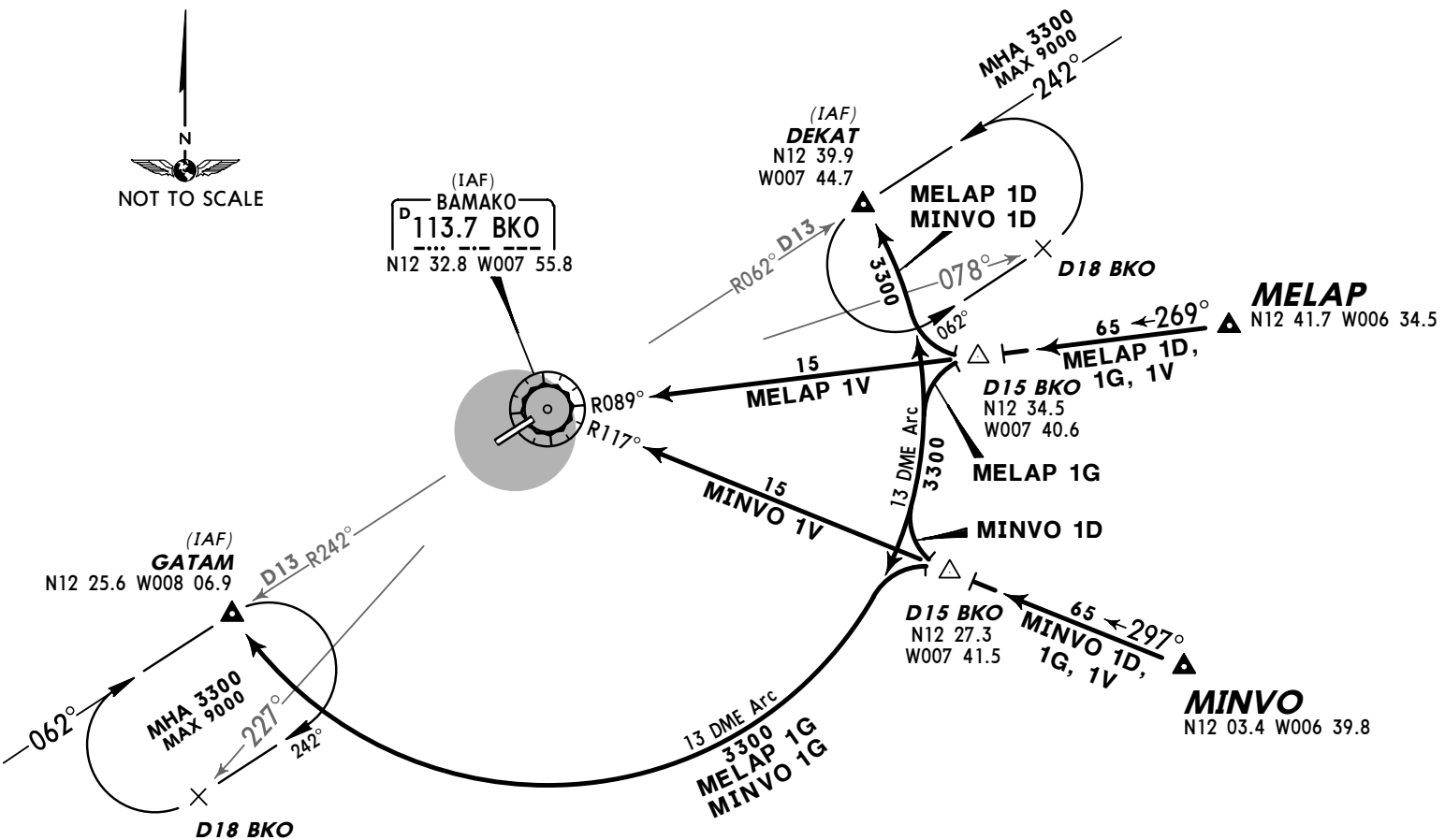
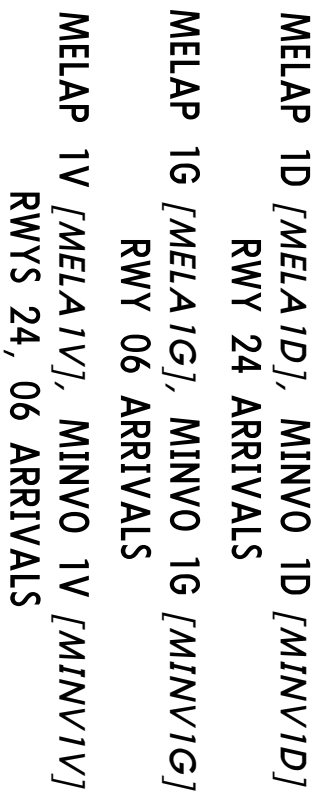
KOSIL
N14 38.4
W007 00.0



NOT TO SCALE

BAMAKO, MALI

Trans alt: 3300'



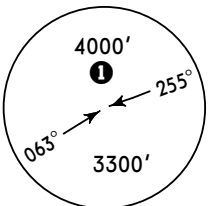
GABS/BKO
SENOU

JEPPESEN
13 APR 07 **10-2D**

BAMAKO, MALI
STAR

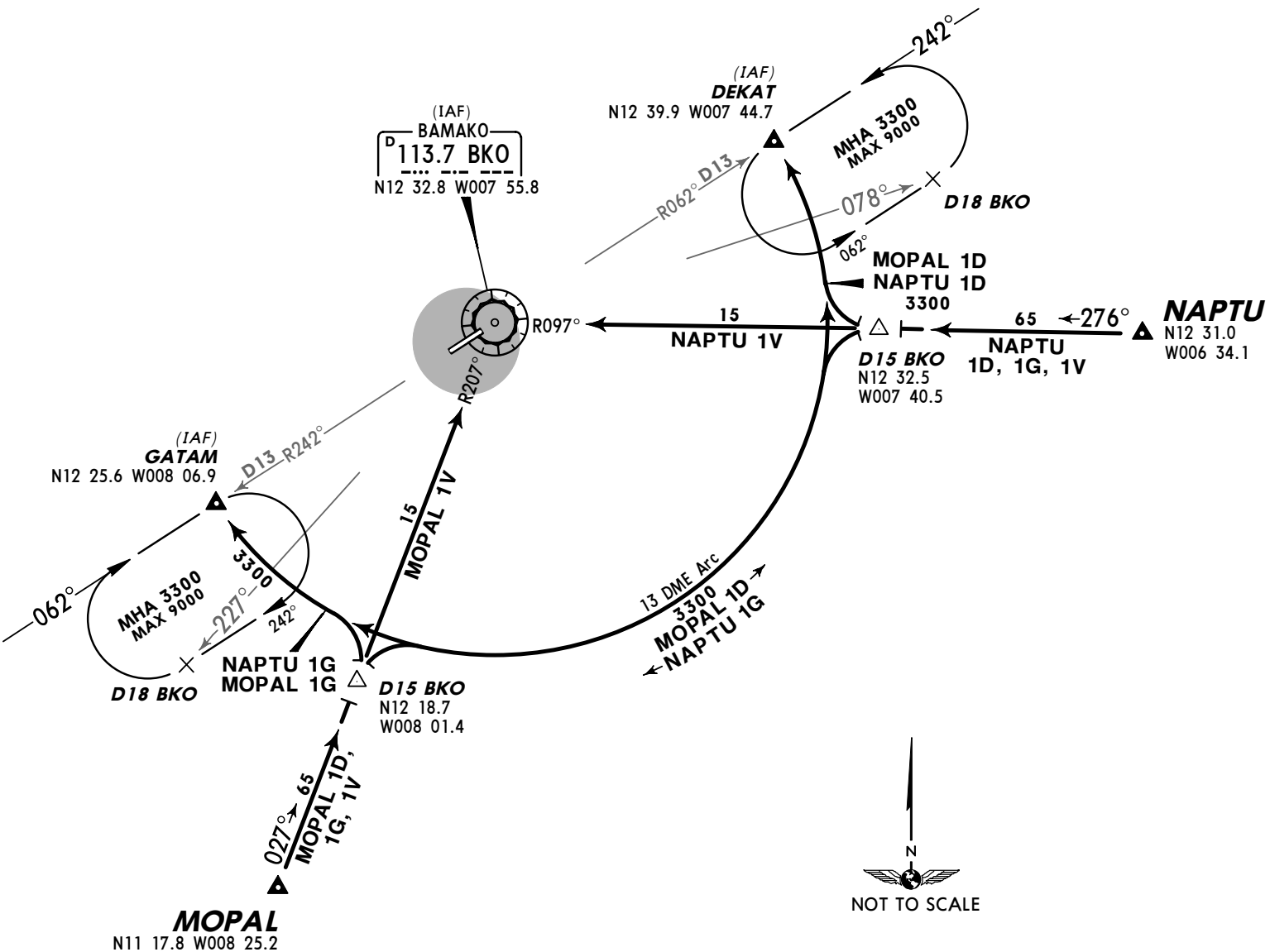
Apt Elev
1247'

Alt Set: hPa Trans level: By ATC Trans alt: 3300'



MSA
BKO VOR
within 13 NM
3300'

MOPAL 1D [MOPA1D], NAPTU 1D [NAPT1D]
RWY 24 ARRIVALS
MOPAL 1G [MOPA1G], NAPTU 1G [NAPT1G]
RWY 06 ARRIVALS
MOPAL 1V [MOPA1V], NAPTU 1V [NAPT1V]
RWYS 24, 06 ARRIVALS



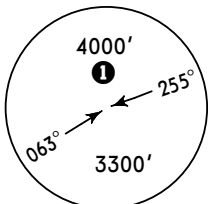
GABS/BKO
SENOU

13 APR 07
10-2E

BAMAKO, MALI
STAR

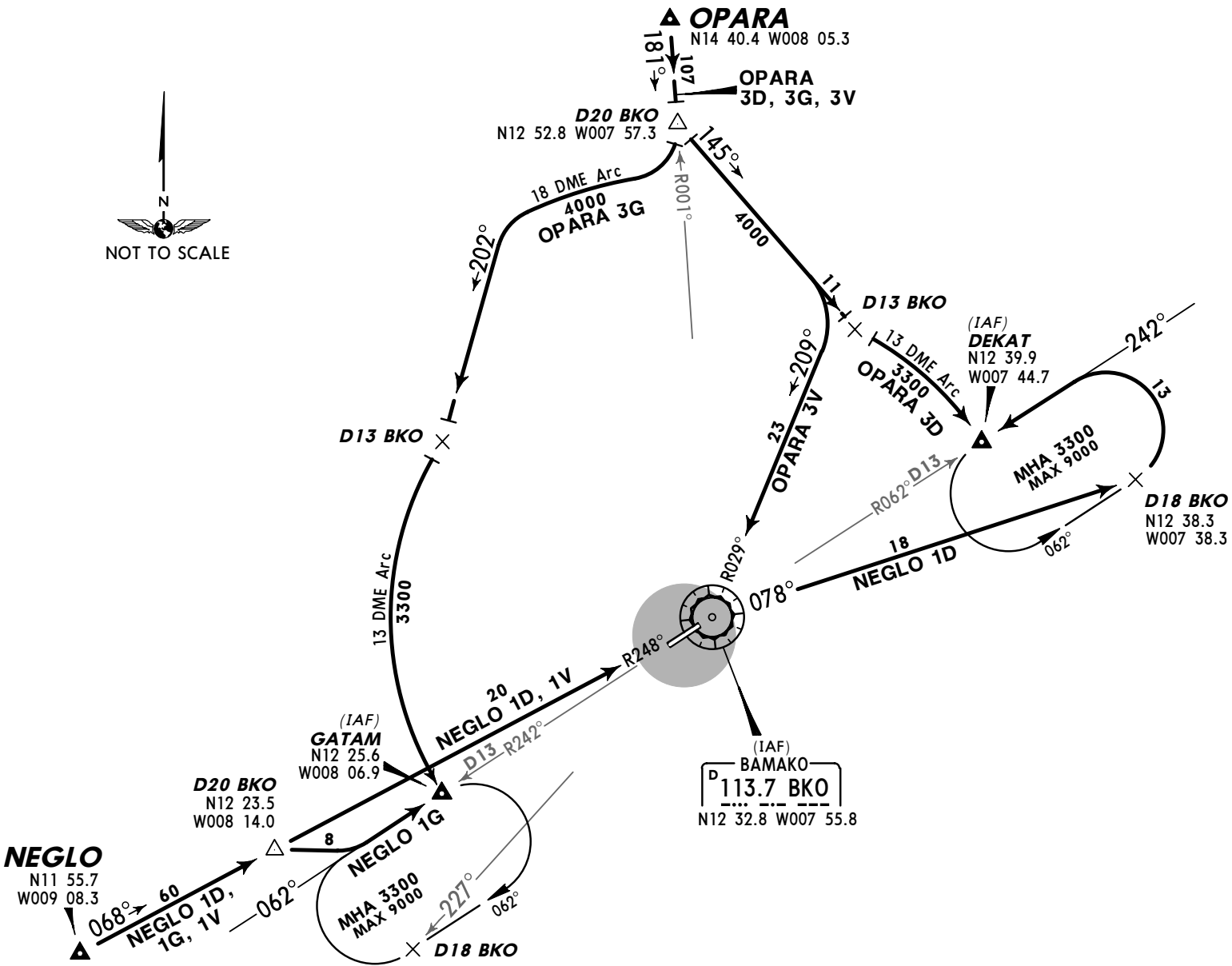
Apt Elev
1247'

Alt Set: hPa Trans level: By ATC Trans alt: 3300'



MSA
BKO VOR
1 within 13 NM
3300'

NEGLO 1D [NEGLO 1D], OPARA 3D [OPARA 3D]
RWY 24 ARRIVALS
NEGLO 1G [NEGLO 1G], OPARA 3G [OPARA 3G]
RWY 06 ARRIVALS
NEGLO 1V [NEGLO 1V], OPARA 3V [OPARA 3V]
RWYS 24, 06 ARRIVALS



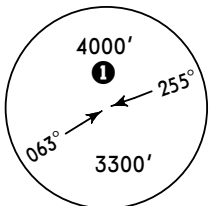
GABS/BKO
SENOU

13 APR 07
10-2F

BAMAKO, MALI
STAR

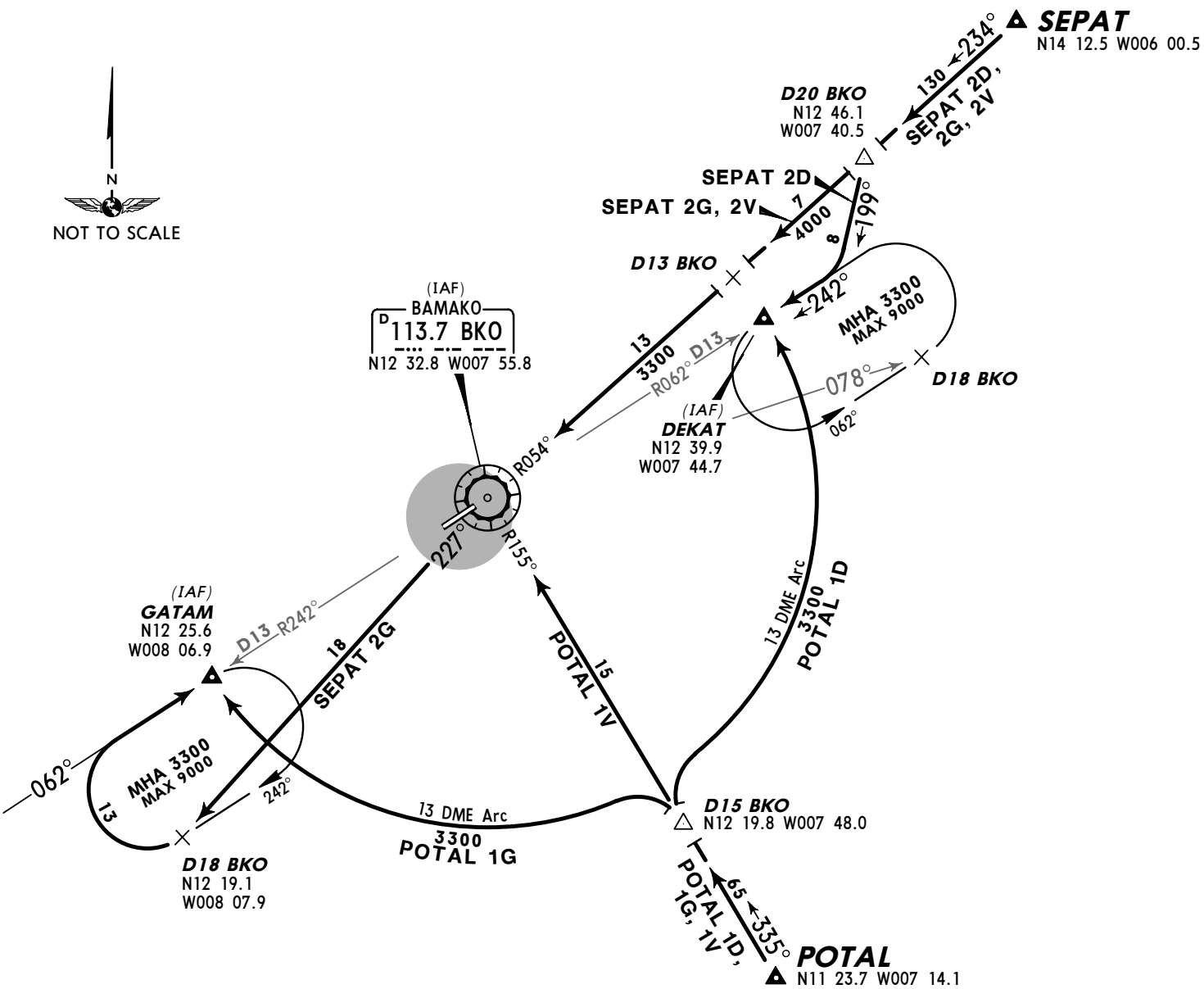
Apt Elev
1247'

Alt Set: hPa Trans level: By ATC Trans alt: 3300'



MSA
BKO VOR
1 within 13 NM
3300'

POTAL 1D [POTA1D], SEPAT 2D [SEPA2D]
RWY 24 ARRIVALS
POTAL 1G [POTA1G], SEPAT 2G [SEPA2G]
RWY 06 ARRIVALS
POTAL 1V [POTA1V], SEPAT 2V [SEPA2V]
RWYS 24, 06 ARRIVALS



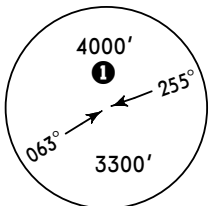
GABS/BKO
SENOU

JEPPESEN
13 APR 07
10-2G

BAMAKO, MALI
STAR

Apt Elev
1247'

Alt Set: hPa Trans level: By ATC Trans alt: 3300'



MSA
BKO VOR
1 within 13 NM
3300'

TOBAS 2D [TOBA2D], UBATI 1D [UBAT1D]
RWY 24 ARRIVALS
TOBAS 2G [TOBA2G], UBATI 1G [UBAT1G]
RWY 06 ARRIVALS
TOBAS 2V [TOBA2V], UBATI 1V [UBAT1V]
RWYS 24, 06 ARRIVALS

TOBAS
N14 01.9
W009 59.9

132°
TOBAS 2D, 2G, 2V
135

D15 BKO
N12 41.7
W008 08.2

13 DME Arc
3300
R312°

089°
TOBAS 2D, 2V
TOBAS 2G

(IAF)
GATAM
N12 25.6
W008 06.9

7
UBATI 1G
MHA 3300
MAX 9000
062°
UBATI 1D, 1V

D20 BKO
N12 20.8
W008 12.3

UBATI
N11 44.8
W009 01.4

059°
UBATI 1D, 1G, 1V
60

D18 BKO

(IAF)
BAMAKO
D 113.7 BKO
N12 32.8 W007 55.8

(IAF)
DEKAT
N12 39.9
W007 44.7

18
TOBAS 2D
UBATI 1D

MHA 3300
MAX 9000

D18 BKO
N12 38.3
W007 38.3



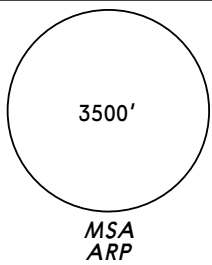
GABS/BKO
SENOU

JEPPESEN
9 APR 10 (10-2H)

BAMAKO, MALI
RNAV STAR

Apt Elev
1247'

Alt Set: hPa Trans level: By ATC Trans alt: 3300'



BIDOK 5D [BIDO5D], BUNVO 5D [BUNV5D]
DENIS 5D [DENI5D]
RWY 24 RNAV ARRIVALS
BIDOK 5G [BIDO5G], BUNVO 5G [BUNV5G]
DENIS 5G [DENI5G]
RWY 06 RNAV ARRIVALS

SPEED MAX 230 KT

BUNVO
N14 38.0
W006 47.8

BUNVO 5D, 5G
117
213°

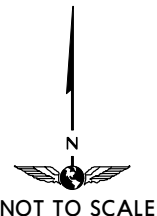
BS028
N12 54.3
W007 44.3

255°
20.8
BUNVO 5G
17.8
101°
17.8
BIDOK 5D
DENIS 5D

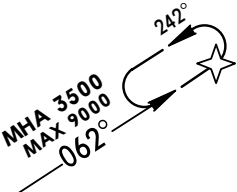
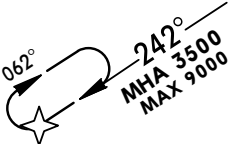
(IAF)
BS010
N12 44.8
W007 45.9

DEKAT
N12 39.9
W007 44.7

BAMAKO
113.7 BKO
N12 32.8 W007 55.8



HOLDINGS OVER
DEKAT GATAM



DENIS
N13 11.9
W009 07.4

125°
55
DENIS 5D, 5G

BS023
N12 45.2
W008 18.5

090°
14.2
DENIS 5D

162°
18.9
BIDOK 5D

BS019
N12 46.6
W008 04.0
(BKO R-336/
D15.9)

101°
17.8
BIDOK 5D
DENIS 5D

207°
19.2
BUNVO 5G

132°
5
GATAM

139°
14
BIDOK 5G

070°
18.1
DENIS 5G

108°
54
BIDOK 5D, 5G

BIDOK
N12 50.0
W009 15.8

BS022
N12 38.3
W008 21.4

(IAF)
BS009
N12 28.6
W008 11.0

GATAM
N12 25.6
W008 06.9

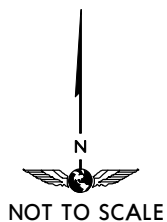
CHANGES: DEKAT & GATAM now fly by.

© JEPPESEN, 2003, 2010. ALL RIGHTS RESERVED.

BAMAKO, MALI

RNAV STAR

Trans alt: 3300'



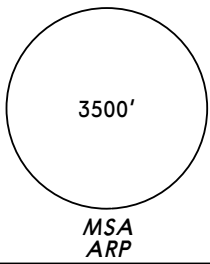
GABS/BKO
SENOU

9 APR 10
JEPPESSEN
10-2K

BAMAKO, MALI
RNAV STAR

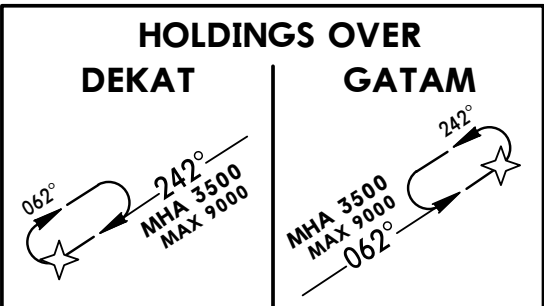
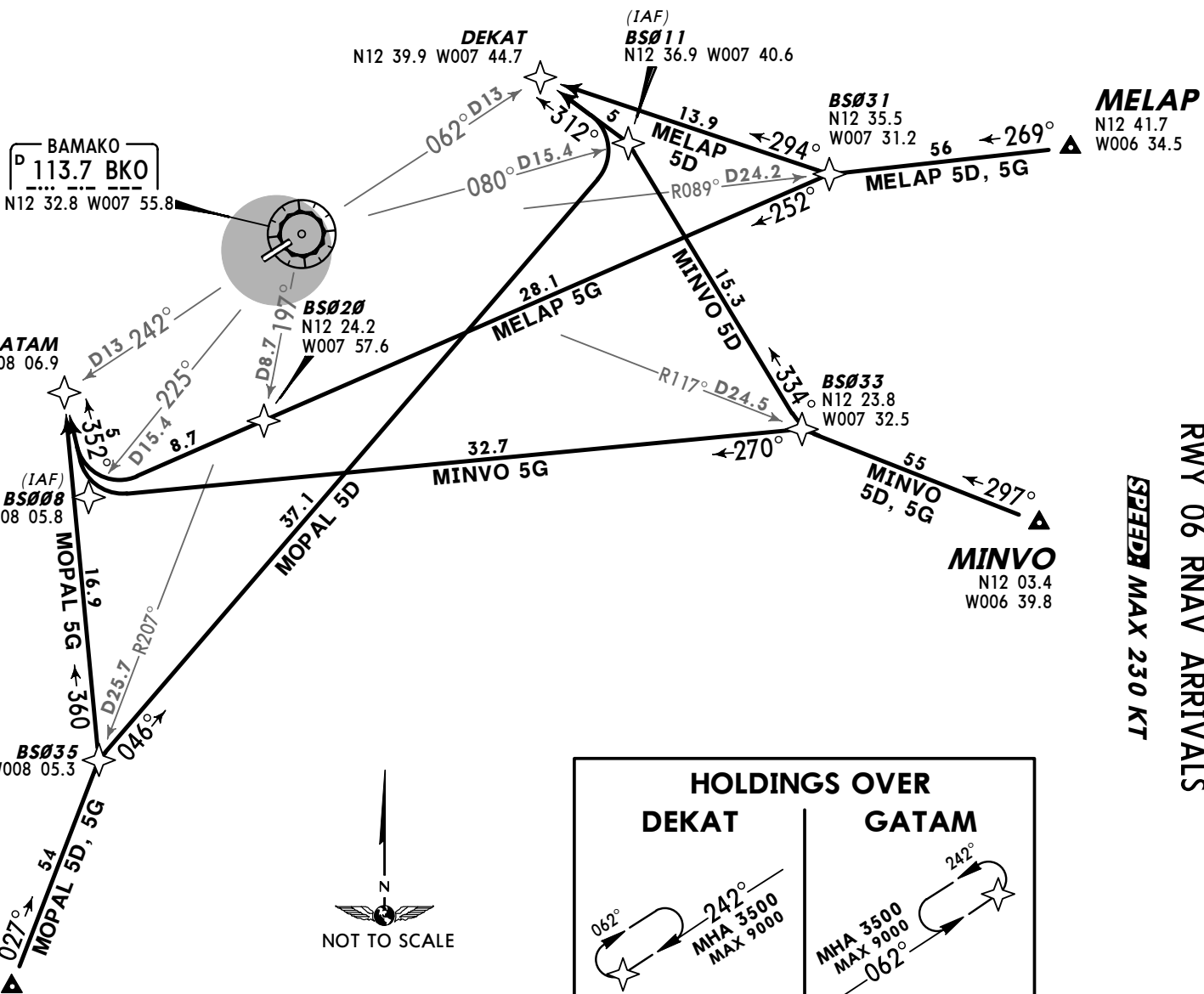
Apt Elev
1247'

Alt Set: hPa Trans level: By ATC Trans alt: 3500'



MELAP 5D [MELA5D], MINVO 5D [MINV5D]
MOPAL 5D [MOPA5D]
RWY 24 RNAV ARRIVALS
MELAP 5G [MELA5G], MINVO 5G [MINV5G]
MOPAL 5G [MOPA5G]
RWY 06 RNAV ARRIVALS

SPEED MAX 230 KT



GABS/BKO
SENOU

9 APR 10
JEPPESSEN
10-2L

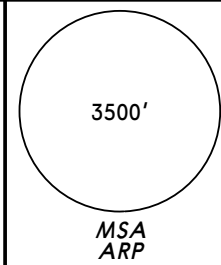
BAMAKO, MALI
RNAV STAR

Apt Elev
1247'

Alt Set: hPa

Trans level: By ATC

Trans alt: 3300'

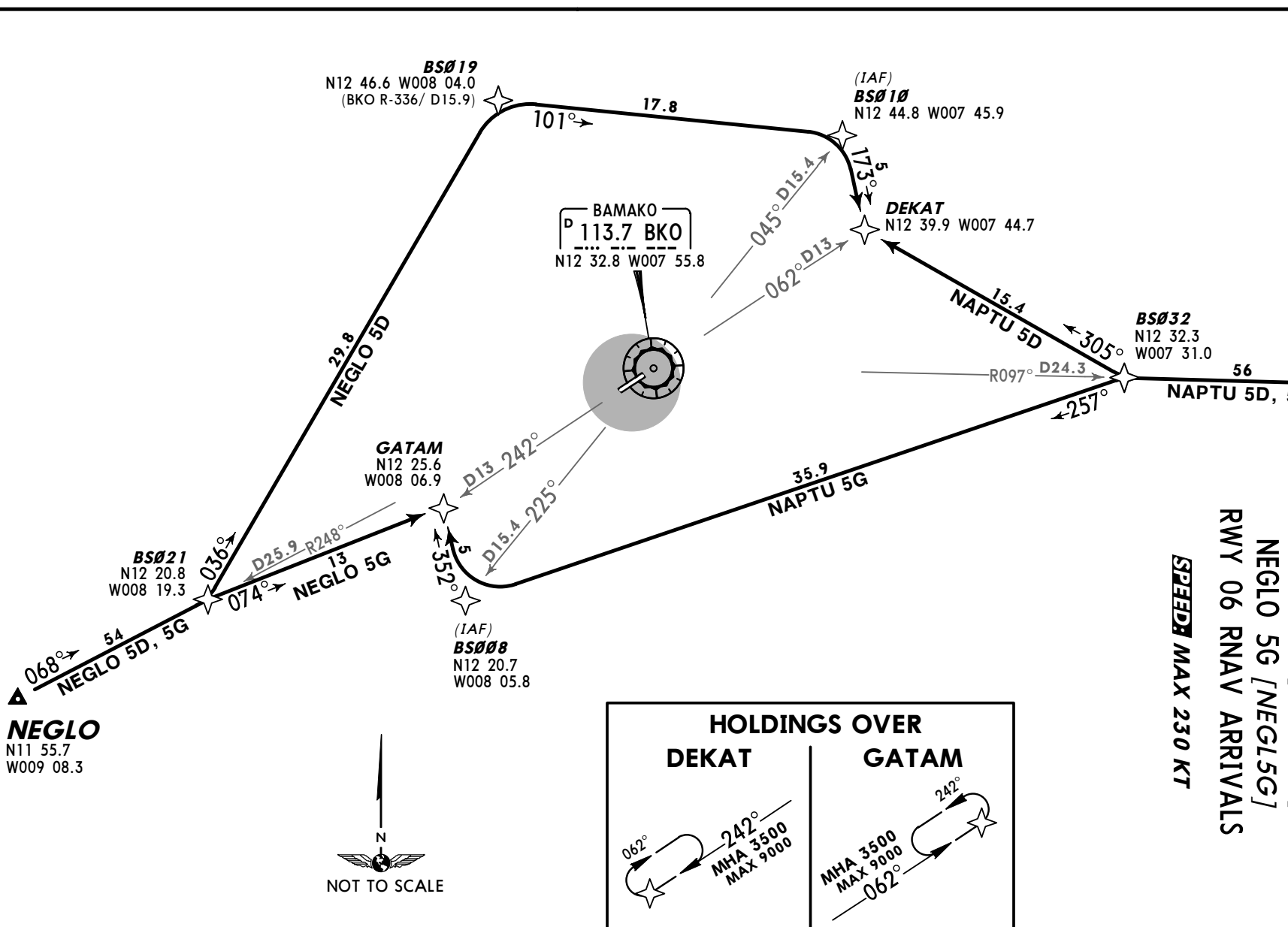


NAPTU
N12 31.0
W006 34.1

NAPTU 5D [NAPT5D]
NEGLO 5D [NEGL5D]
RWY 24 RNAV ARRIVALS

NAPTU 5G [NAPT5G]
NEGLO 5G [NEGL5G]
RWY 06 RNAV ARRIVALS

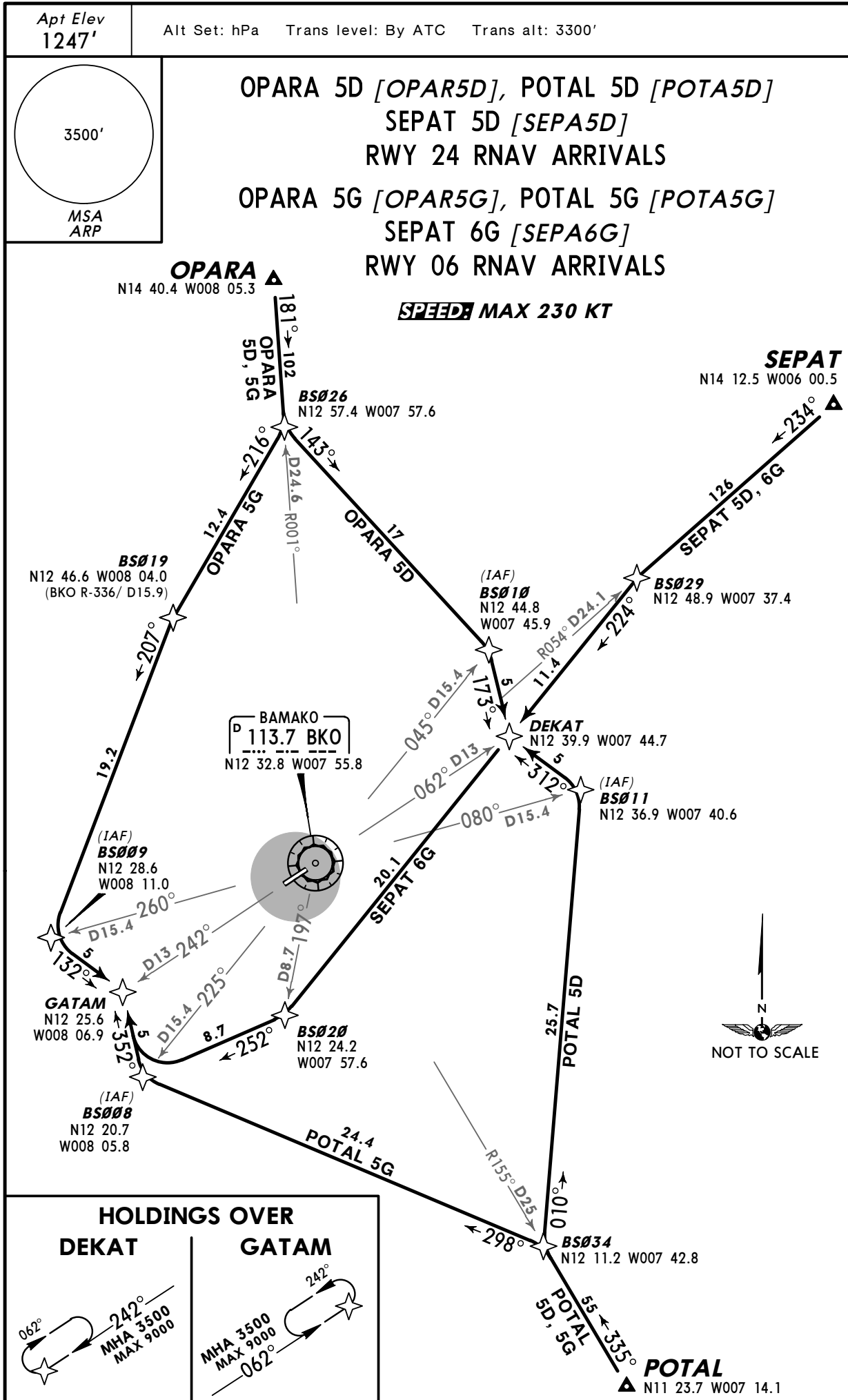
SPEEDS MAX 230 KT



GABS/BKO
SENOU

JEPPESSEN
9 APR 10 (10-2M)

BAMAKO, MALI
RNAV STAR



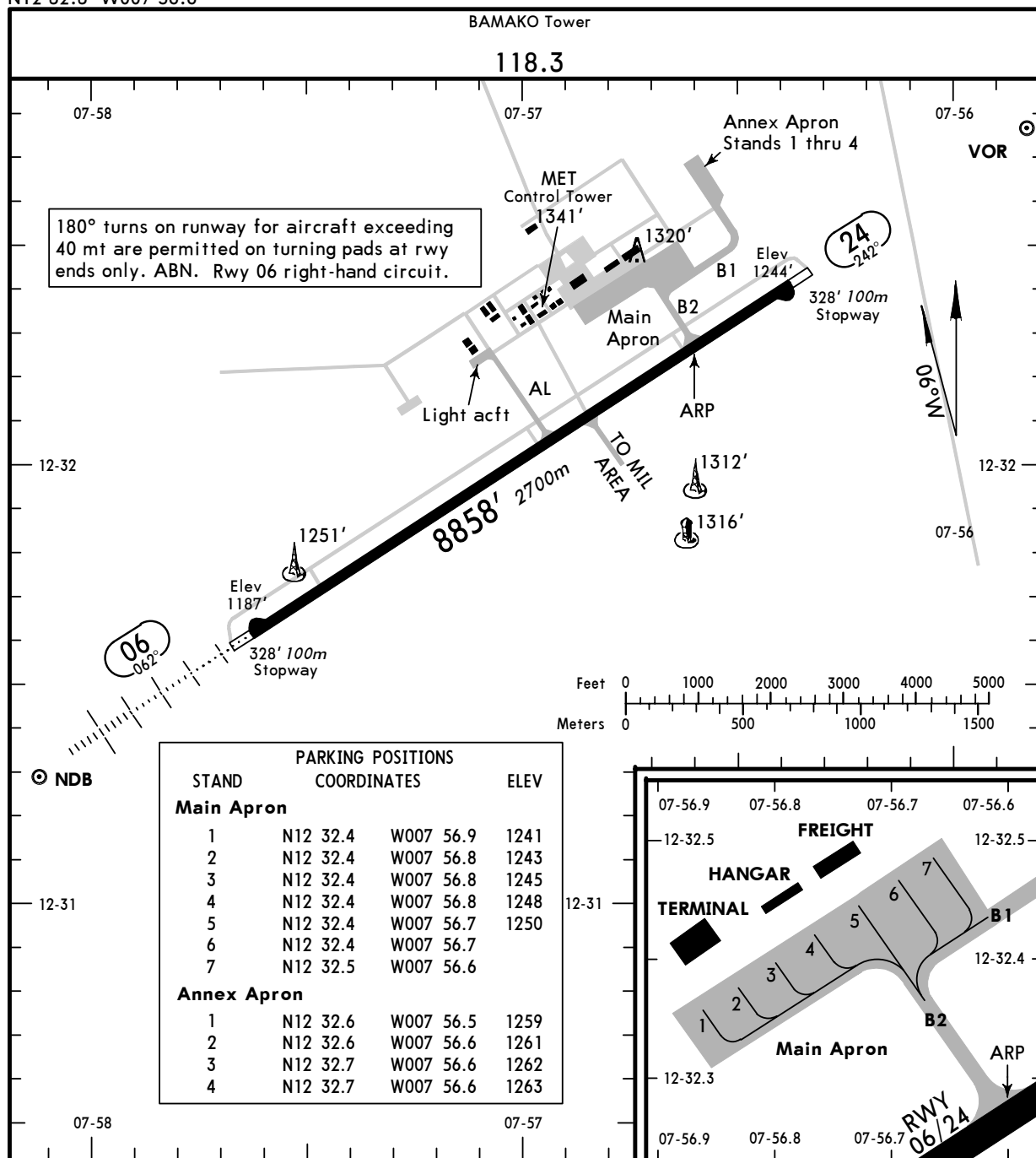
BAMAKO, MALI
RNAV STAR

© JEPPESEN, 2003, 2010. ALL RIGHTS RESERVED.

GABS/BKO
Apt Elev **1247'**
N12 32.3 W007 56.6

JEPPESSEN
3 OCT 08 **(10-9)**

BAMAKO, MALI
SENOU



JAR-OPS

TAKE-OFF 1

All Rwys		
LVP must be in Force		
RCLM (DAY only) or RL	RCLM (DAY only) or RL	NIL (DAY only)
A		
B	250m	400m
C		500m
D	300m	

1 Operators applying U.S. Ops Specs: CL required below 300m.

CHANGES: Stands on Annex Apron.

© JEPPESSEN, 2001, 2008. ALL RIGHTS RESERVED.

GABS/BKO
SENOU

JEPPESSEN
11 MAY 07 **(11-1)**

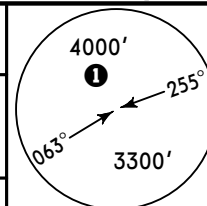
BAMAKO, MALI
via GATAM ILS Rwy 06

BRIEFING STRIP™

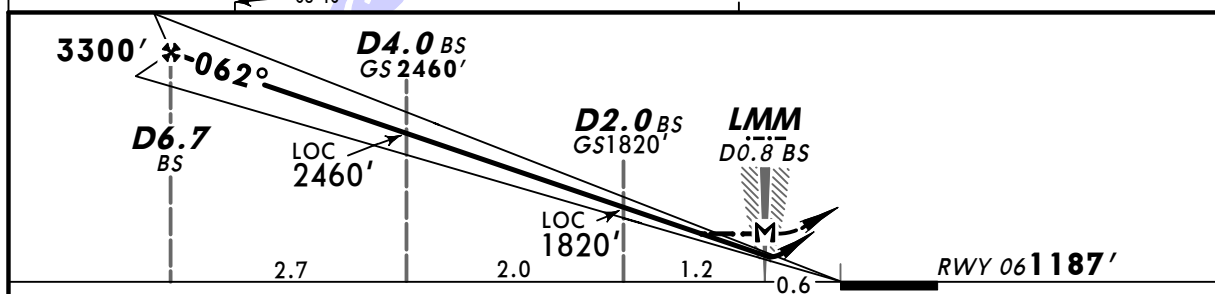
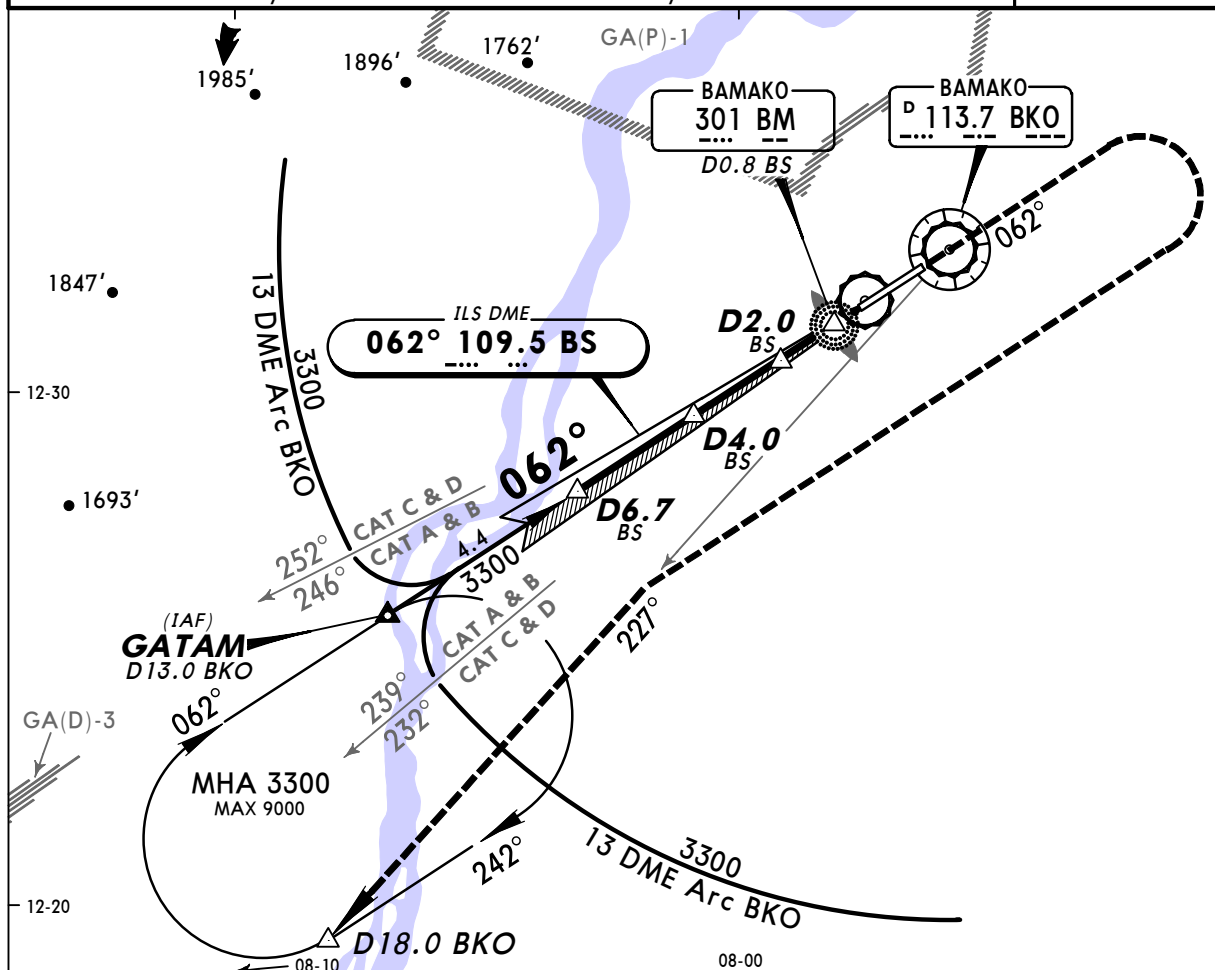
Approach Control through Tower BAMAKO Tower 118.3				
LOC BS 109.5	Final Apch Crs 062°	GS D4.0 BS 2460' (1273')	ILS DA(H) Refer to Minimums	Apt Elev 1247' RWY 1187'

MISSED APCH: Climb STRAIGHT AHEAD to 2900', then climbing turn RIGHT to 3300' to intercept R-227 to rejoin GATAM holding.

Alt Set: hPa Rwy Elev: 43 hPa Trans level: By ATC Trans alt: 3300'



MSA BKO VOR
① 3300' within
D13.0 BKO



Gnd speed-Kts	70	90	100	120	140	160	HIALS 2900' ↑
ILS GS 3.00° or LOC Descent Gradient 5.2%	377	484	538	646	753	861	
MAP at LMM/D0.8 BS							

JAR-OPS		STRAIGHT-IN LANDING RWY 06				CIRCLE-TO-LAND 1						
		ILS		LOC (GS out)				DAY		NIGHT		
DA(H)		A: 1387' (200') C: 1407' (220')		MDA(H) 1460' (273')								
		B: 1397' (210') D: 1417' (230')										
		FULL		ALS out		ALS out		Max Kts.	MDA(H)	VIS		
A	RVR 550m		RVR 1000m		RVR 800m		RVR 1500m		100	1660' (473')	1500m	NOT AUTH
B	RVR 600m						RVR 1600m		135	1750' (563')	1600m	
C							RVR 1800m		180	1860' (673')	2400m	
D							RVR 1200m		RVR 1800m	205	1950' (763')	

① Circling height based on rwy 06 thresh elev of 1187'.

CHANGES: LOM withdrawn.

© JEPPESSEN SANDERSON, INC., 2000, 2007. ALL RIGHTS RESERVED.

PANS OPS

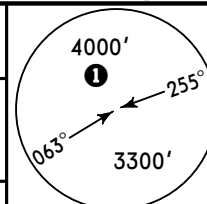
GABS/BKO
SENOU

JEPPESSEN
11 MAY 07 **(11-2)**

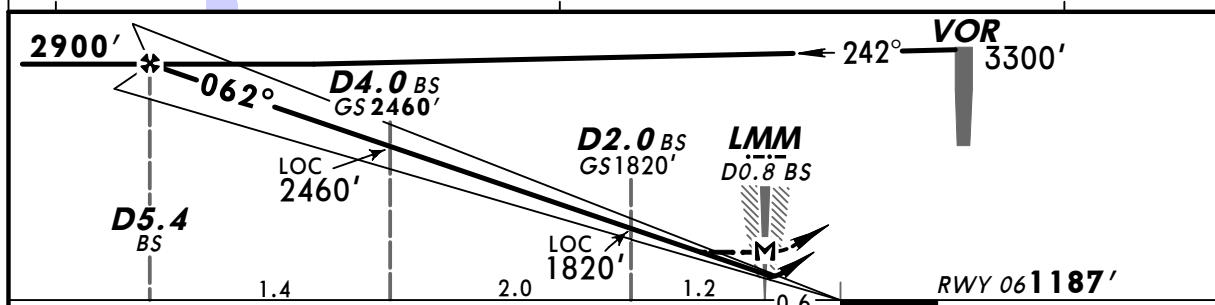
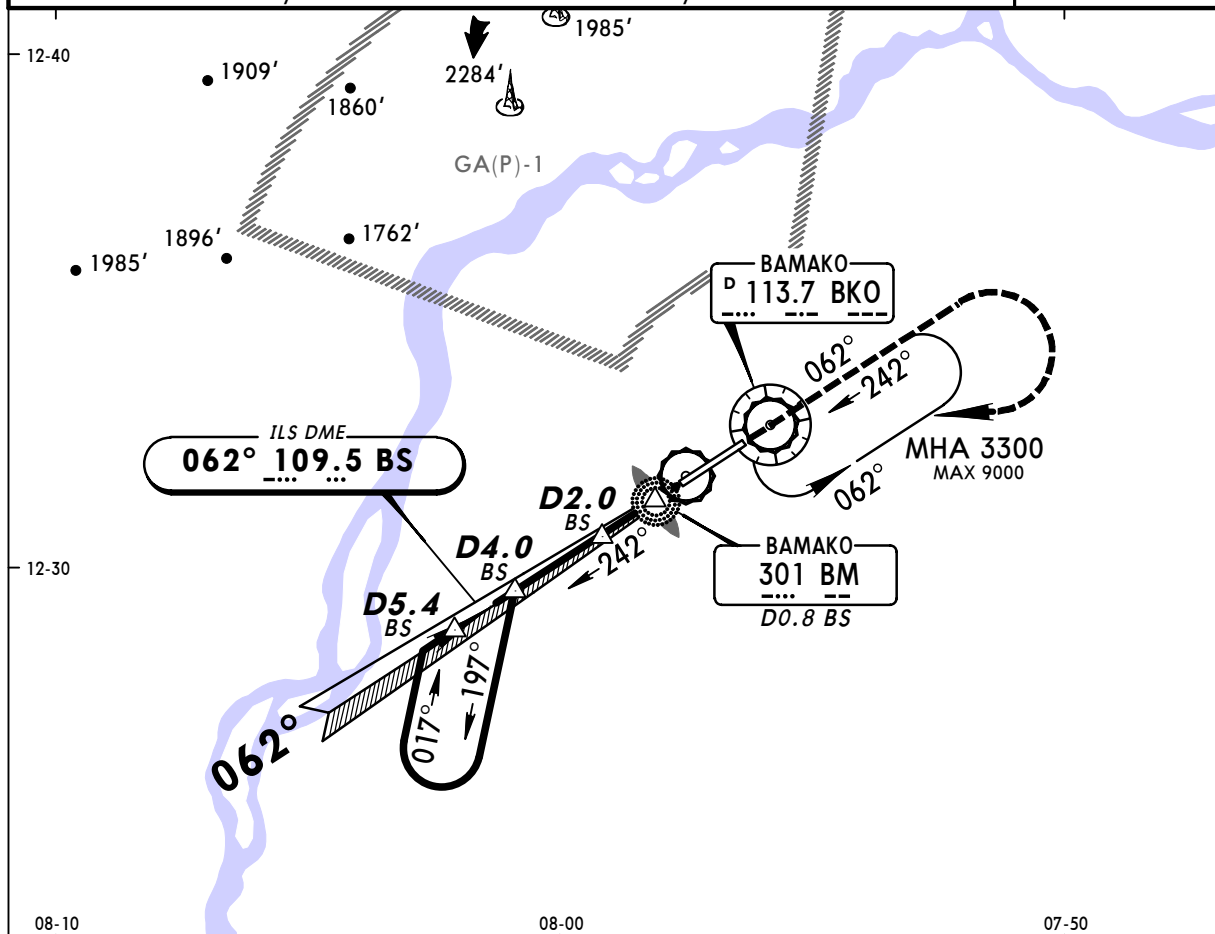
BAMAKO, MALI
via VOR **ILS Rwy 06**

BRIEFING STRIP™

Approach Control through Tower BAMAKO Tower 118.3				
LOC BS 109.5	Final Apch Crs 062°	GS D4.0 BS 2460' (1273')	ILS DA(H) Refer to Minimums	Apt Elev 1247' RWY 1187'
MISSED APCH: Climb STRAIGHT AHEAD to 2900', then climbing turn RIGHT to 3300' to rejoin VOR.				
Alt Set: hPa	Rwy Elev: 43 hPa	Trans level: By ATC	Trans alt: 3300'	



MSA BKO VOR
① 3300' within
D13.0 BKO



Gnd speed-Kts	70	90	100	120	140	160	HIALS 2900' ↑
ILS GS 3.00° or	377	484	538	646	753	861	
LOC Descent Gradient 5.2%							
MAP at LMM/D0.8 BS							

JAR-OPS STRAIGHT-IN LANDING RWY 06				CIRCLE-TO-LAND ①	
ILS		LOC (GS out)		DAY	NIGHT
DA(H) A: 1387' (200') C: 1407' (220')		MDA(H) 1460' (273')			
B: 1397' (210') D: 1417' (230')					
FULL	ALS out		ALS out	Max Kts	
A RVR 550m	RVR 1000m	RVR 800m	RVR 1500m	100	1660' (473') 1500m
B			RVR 1600m	135	1750' (563') 1600m
C RVR 600m			RVR 1800m	180	1860' (673') 2400m
D				205	1950' (763') 3600m

① Circling height based on rwy 06 thresh elev of 1187'.

PANS OPS

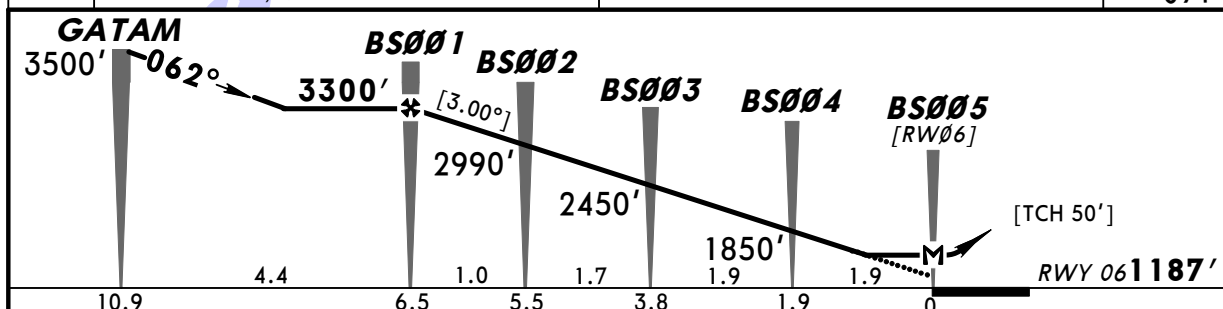
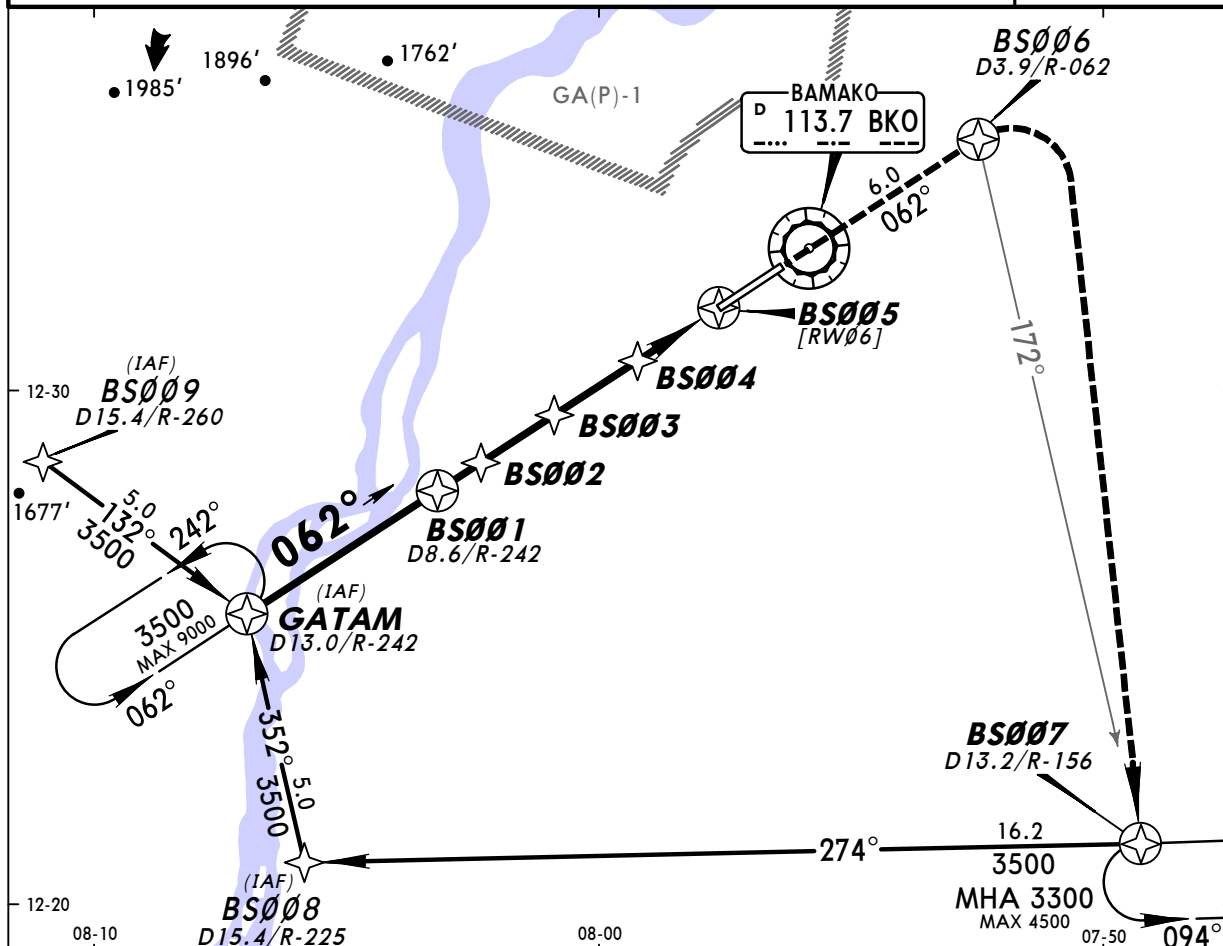
GABS/BKO
SENOU

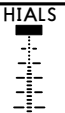
JEPPESSEN
11 MAY 07 (12-1)

BAMAKO, MALI
RNAV (GNSS) Rwy 06

BRIEFING STRIP™

Approach Control through Tower			BAMAKO Tower 118.3		<div><div></div><div>3500'</div><div>MSA ARP</div></div>
RNAV	Final Apch Crs 062°	Minimum Alt BS001 3300' (2113')	MDA(H) 1590' (403')	Apt Elev 1247' RWY 1187'	
MISSED APCH: Climb STRAIGHT AHEAD on 062° to BS006, then turn RIGHT climbing to 3500' to rejoin BS007.					
Alt Set: hPa		Rwy Elev: 43 hPa	Trans level: By ATC		
Trans alt: 3300'					
Procedure restricted to MAX 230 KT.					



Gnd speed-Kts	70	90	100	120	140	160		BS006 ↑ on 062°
Descent angle [3.00°]	372	478	531	637	743	849		
MAP at BS005								

JAR-OPS STRAIGHT-IN LANDING RWY 06				CIRCLE-TO-LAND 1			
MDA(H) 1590' (403')				DAY		NIGHT	
		ALS out		Max Kts.	MDA(H)	VIS	NOT AUTH
A	RVR 900m	RVR 1500m		100	1660' (473')	1500m	
B	RVR 1000m	RVR 1800m		135	1750' (563')	1600m	
C	RVR 1400m	RVR 2000m		180	1860' (673')	2400m	
D	RVR 1400m	RVR 2000m		205	1950' (763')	3600m	

1 Circling height based on rwy 06 thresh elev of 1187'.

CHANGES: Lctr withdrawn.

© JEPPESSEN SANDERSON, INC., 2003, 2007. ALL RIGHTS RESERVED.

PANS OPS

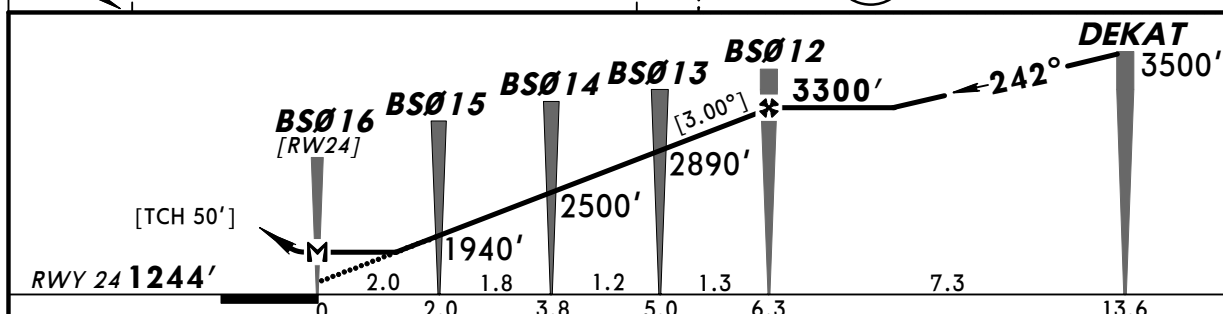
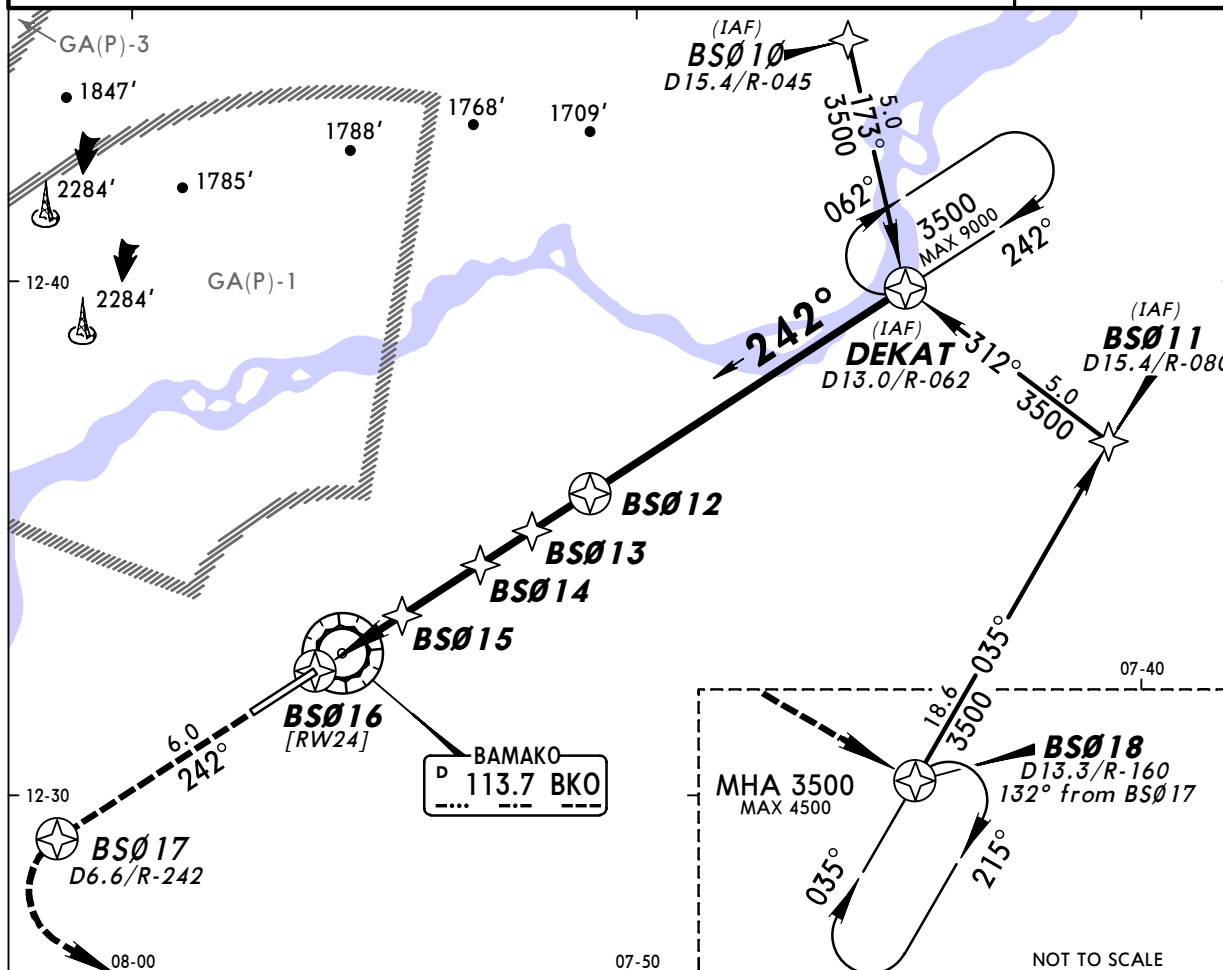
GABS/BKO
SENOU

JEPPESEN
11 MAY 07 (12-2)

BAMAKO, MALI
RNAV (GNSS) Rwy 24

BRIEFING STRIP

Approach Control through Tower			BAMAKO Tower 118.3		<div><div></div><div>3500'</div></div> <div>MSA ARP</div>
RNAV	Final Apch Crs 242°	Minimum Alt BSØ12 3300' (2056')	MDA(H) 1590' (346')	Apt Elev 1247' RWY 1244'	
MISSED APCH: Climb STRAIGHT AHEAD on 242° to BSØ17, then turn LEFT climbing to 3500' to rejoin BSØ18.					
Alt Set: hPa		Rwy Elev: 45 hPa	Trans level: By ATC		
Procedure restricted to MAX 230 KT.		Trans alt: 3300'			



Gnd speed-Kts	70	90	100	120	140	160	PAPI-L	BSØ17 ↑ on 242°
Descent gradient [3.00°]	372	478	531	637	743	849		
MAP at BSØ16								

JAR-OPS STRAIGHT-IN LANDING RWY 24			CIRCLE-TO-LAND 1		
MDA(H) 1590' (346')			Max Kts	DAY	NIGHT
				MDA(H)	VIS
A	RVR 1500m		100	1660' (416')	1500m
B			135	1750' (506')	1600m
C	RVR 1800m		180	1860' (616')	2400m
D	RVR 2000m		205	1950' (706')	3600m

1 Circling height based on rwy 24 thresh elev of 1244'.

CHANGES: Lctr withdrawn.

© JEPPESEN SANDERSON, INC., 2003, 2007. ALL RIGHTS RESERVED.

GABS/BKO
SENOU

JEPPESSEN
11 MAY 07 (13-1)

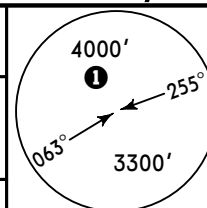
BAMAKO, MALI
VOR DME Rwy 06

BRIEFING STRIP™

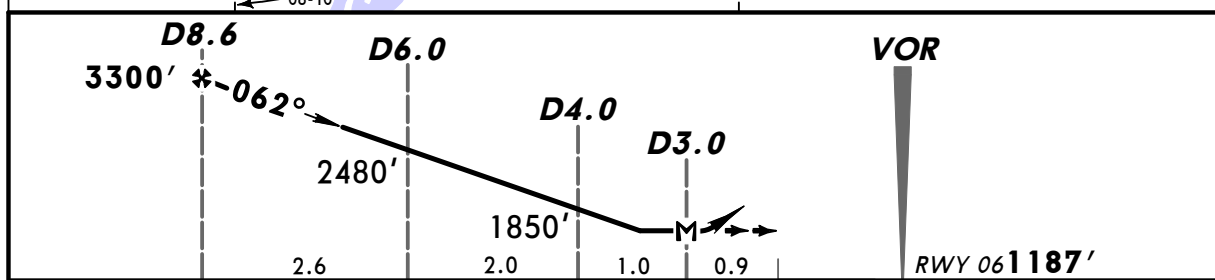
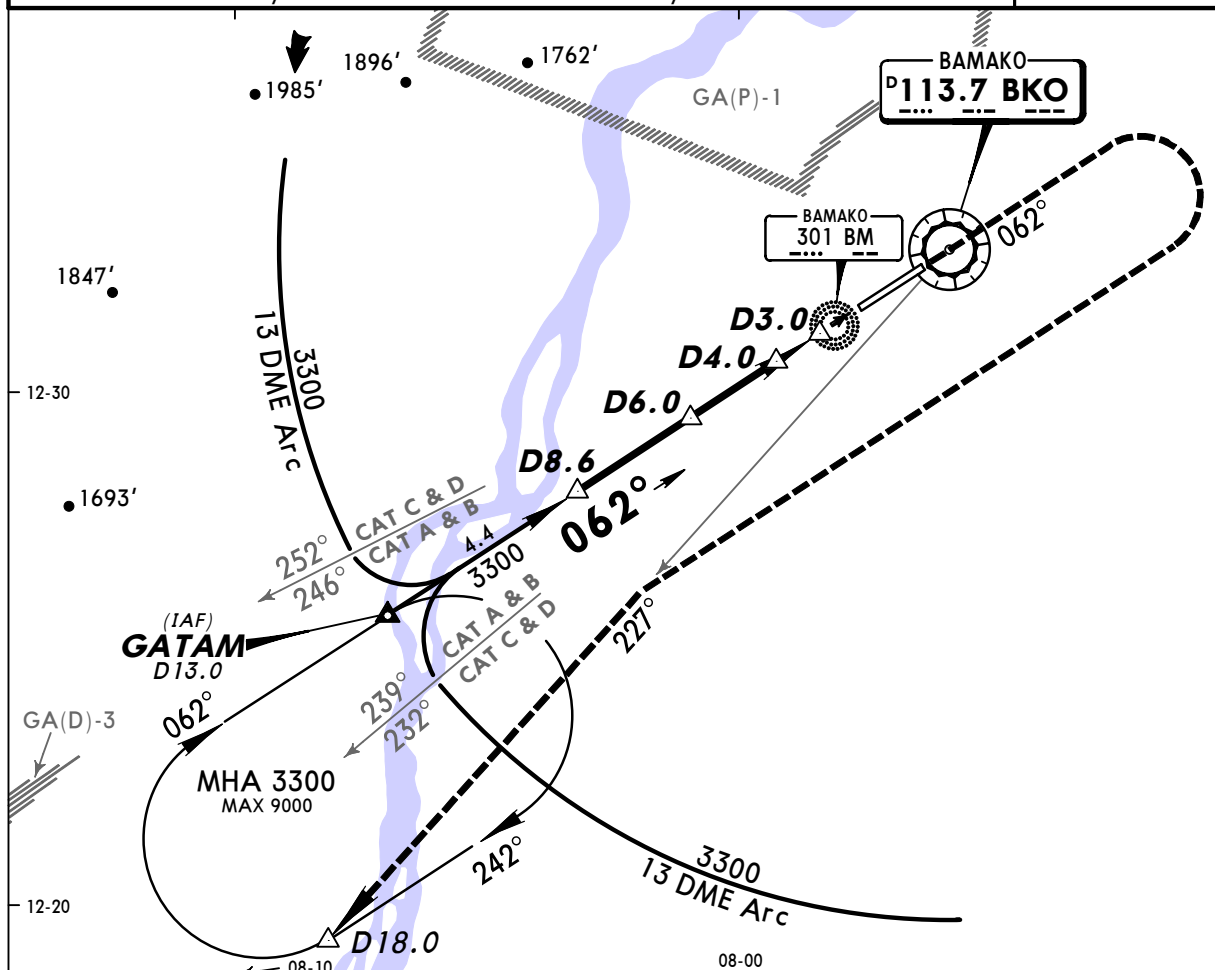
Approach Control through Tower BAMAKO Tower 118.3				
VOR BKO 113.7	Final Apch Crs 062°	Minimum Alt D8.6 3300' (2113')	MDA(H) 1460' (273')	Apt Elev 1247' RWY 1187'

MISSED APCH: Climb STRAIGHT AHEAD to 2900', then climbing turn RIGHT to 3300' to intercept R-227 to rejoin GATAM holding.

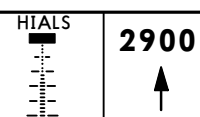
Alt Set: hPa Rwy Elev: 43 hPa Trans level: By ATC Trans alt: 3300'



MSA BKO VOR
① 3300' within
D13.0



Gnd speed-Kts	70	90	100	120	140	160
Descent Gradient 5.2%	369	474	527	646	738	843
MAP at D3.0						



JAR-OPS STRAIGHT-IN LANDING RWY 06				CIRCLE-TO-LAND ①			
MDA(H) 1460' (273')				DAY		NIGHT	
ALS out			Max Kts	MDA(H)	VIS	NOT AUTH	
A	RVR 800m		100	1660' (473')	1500m		
B			135	1750' (563')	1600m		
C			180	1860' (673')	2400m		
D	RVR 1200m	RVR 1800m	205	1950' (763')	3600m		

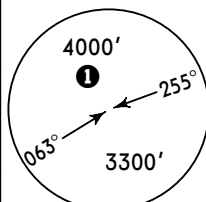
① Circling height based on rwy 06 thresh elev of 1187'.

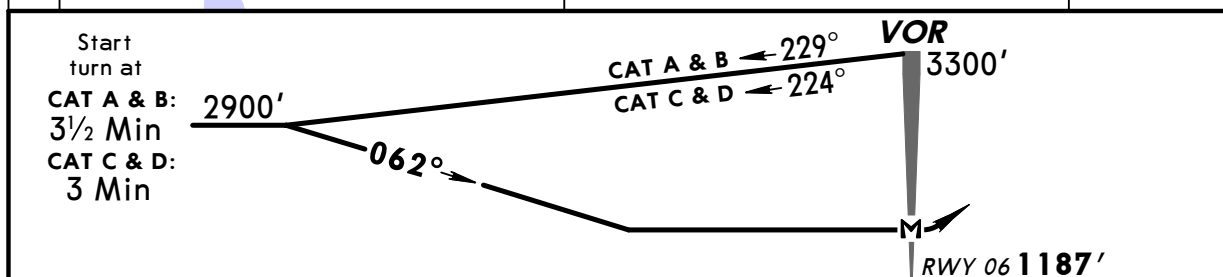
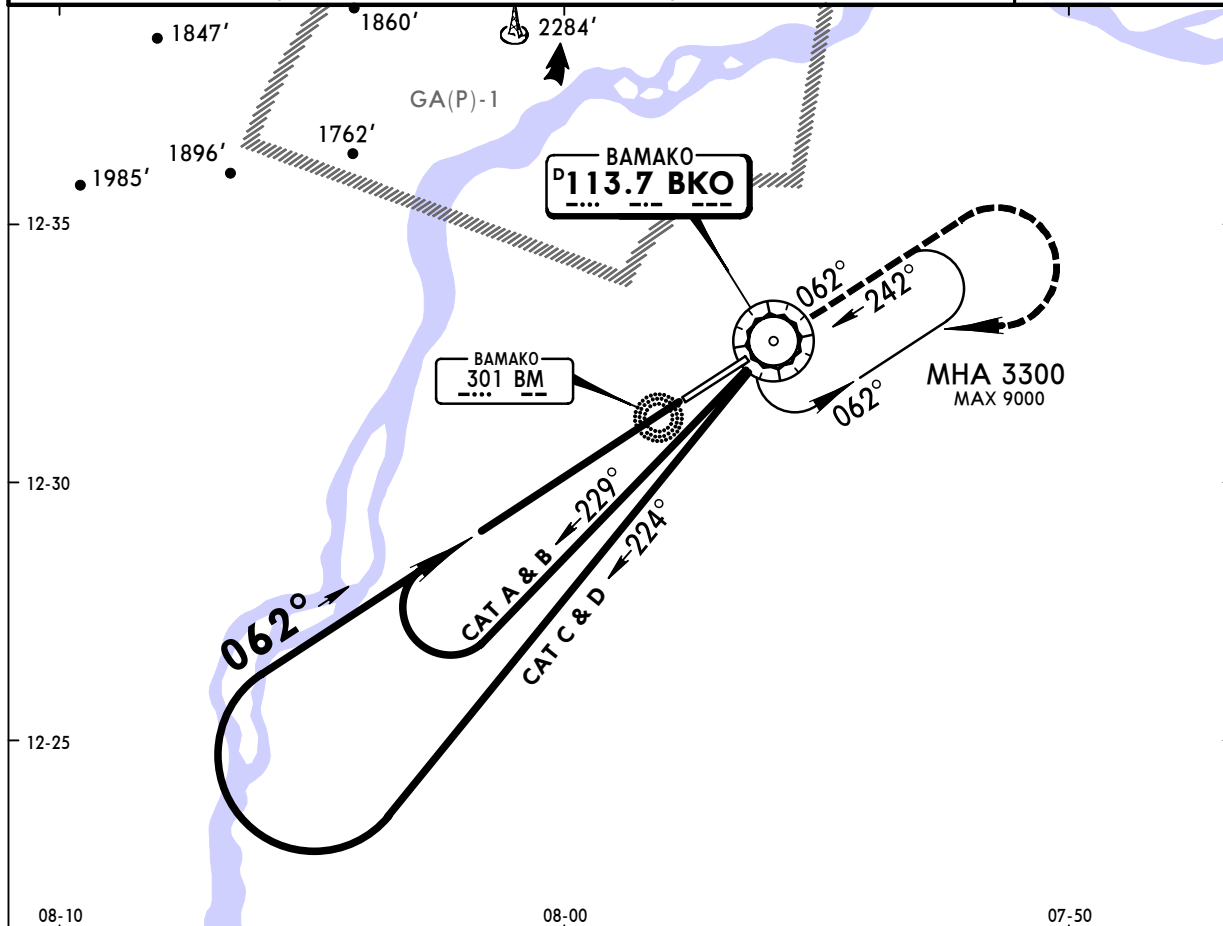
GABS/BKO
SENOU

JEPPESEN
11 MAY 07 **(13-2)**

BAMAKO, MALI
VOR Rwy 06

BRIEFING STRIP™

Approach Control through Tower BAMAKO Tower 118.3					 <p>MSA BKO VOR ① 3300' within D13.0</p>
VOR BKO 113.7	Final Apch Crs 062°	Minimum Alt No FAF	MDA(H) 1640' (453')	Apt Elev 1247' RWY 1187'	
MISSED APCH: Climb STRAIGHT AHEAD to 2900', then climbing turn RIGHT to 3300' to rejoin VOR.					
Alt Set: hPa	Rwy Elev: 43 hPa	Trans level: By ATC	Trans alt: 3300'		



						HIALS	2900'
							↑
MAP at VOR							

JAR-OPS		STRAIGHT-IN LANDING RWY 06			CIRCLE-TO-LAND				
		MDA(H) 1640' (453')					DAY		NIGHT
		ALS out			Max Kts	MDA(H) VIS			
A	RVR 1000m	RVR 1500m			100	1660' (473')	1500m	NOT AUTH	
B	RVR 1200m				135	1750' (563')	1600m		
C		RVR 2000m	180	1860' (673')	2400m				
D	RVR 1600m		205	1950' (763')	3600m				

① Circling height based on rwy 06 thresh elev of 1187'.

PANS OPS

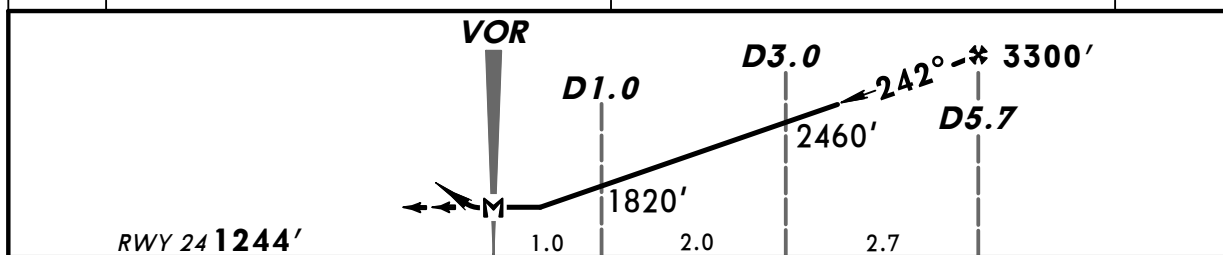
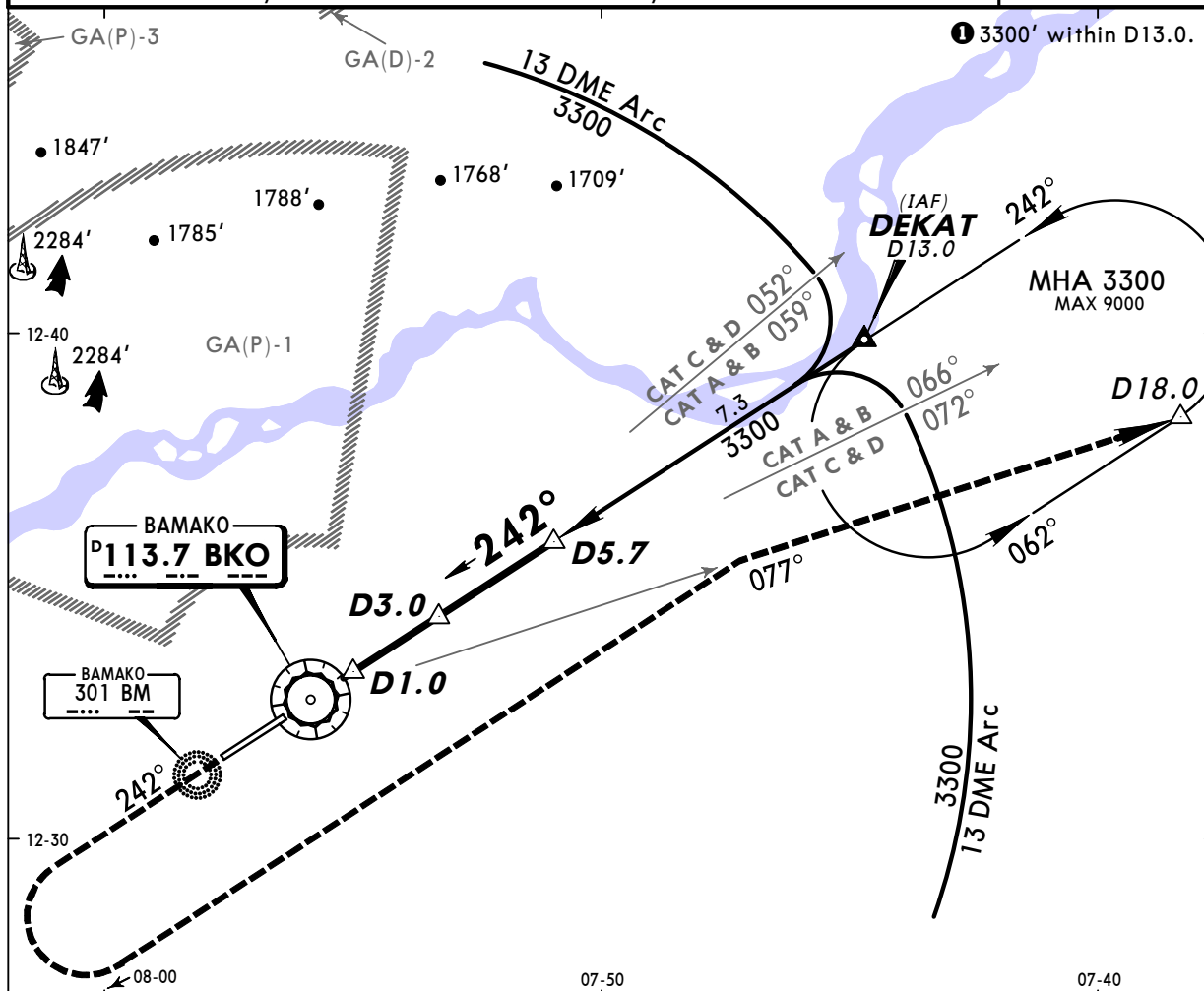
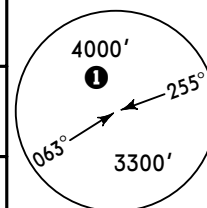
GABS/BKO
SENOU

JEPPESEN
11 MAY 07 (13-3)

BAMAKO, MALI
VOR DME Rwy 24

BRIEFING STRIP™

Approach Control through Tower BAMAKO Tower 118.3				
VOR BKO 113.7	Final Apch Crs 242°	Minimum Alt D5.7 3300' (2056')	MDA(H) 1590' (346')	Apt Elev 1247' RWY 1244'
MISSED APCH: Climb STRAIGHT AHEAD to 2900', then climbing turn LEFT to 3300' to intercept R-077 to rejoin DEKAT holding.				
Alt Set: hPa	Rwy Elev: 45 hPa	Trans level: By ATC	Trans alt: 3300'	



Gnd speed-Kts	70	90	100	120	140	160		
Descent Gradient 5.2%	369	474	527	646	738	843		
MAP at VOR								

JAR-OPS STRAIGHT-IN LANDING RWY 24				CIRCLE-TO-LAND 1			
MDA(H) 1590' (346')				DAY		NIGHT	
A	B	C	D	Max Kts	MDA(H)	VIS	
				100	1660' (416')	1500m	NOT AUTH
				135	1750' (506')	1600m	
				180	1860' (616')	2400m	
				205	1950' (706')	3600m	

1 Circling height based on rwy 24 thresh elev of 1244'.

CHANGES: BN Lctr withdrawn.

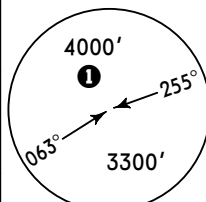
© JEPPESEN SANDERSON, INC., 2000, 2007. ALL RIGHTS RESERVED.

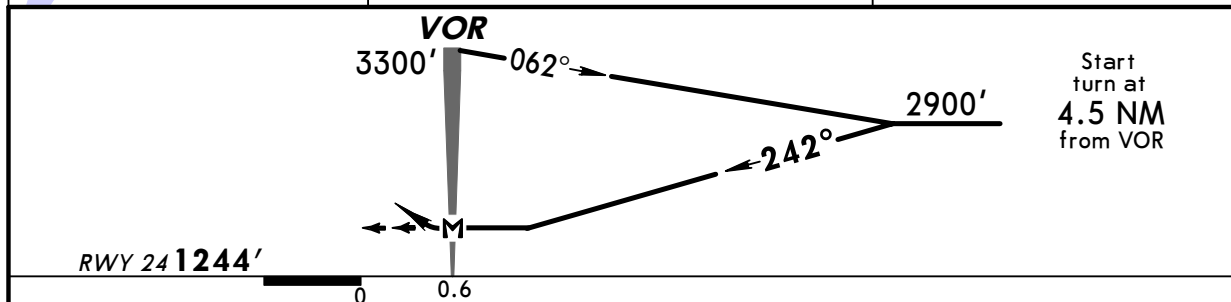
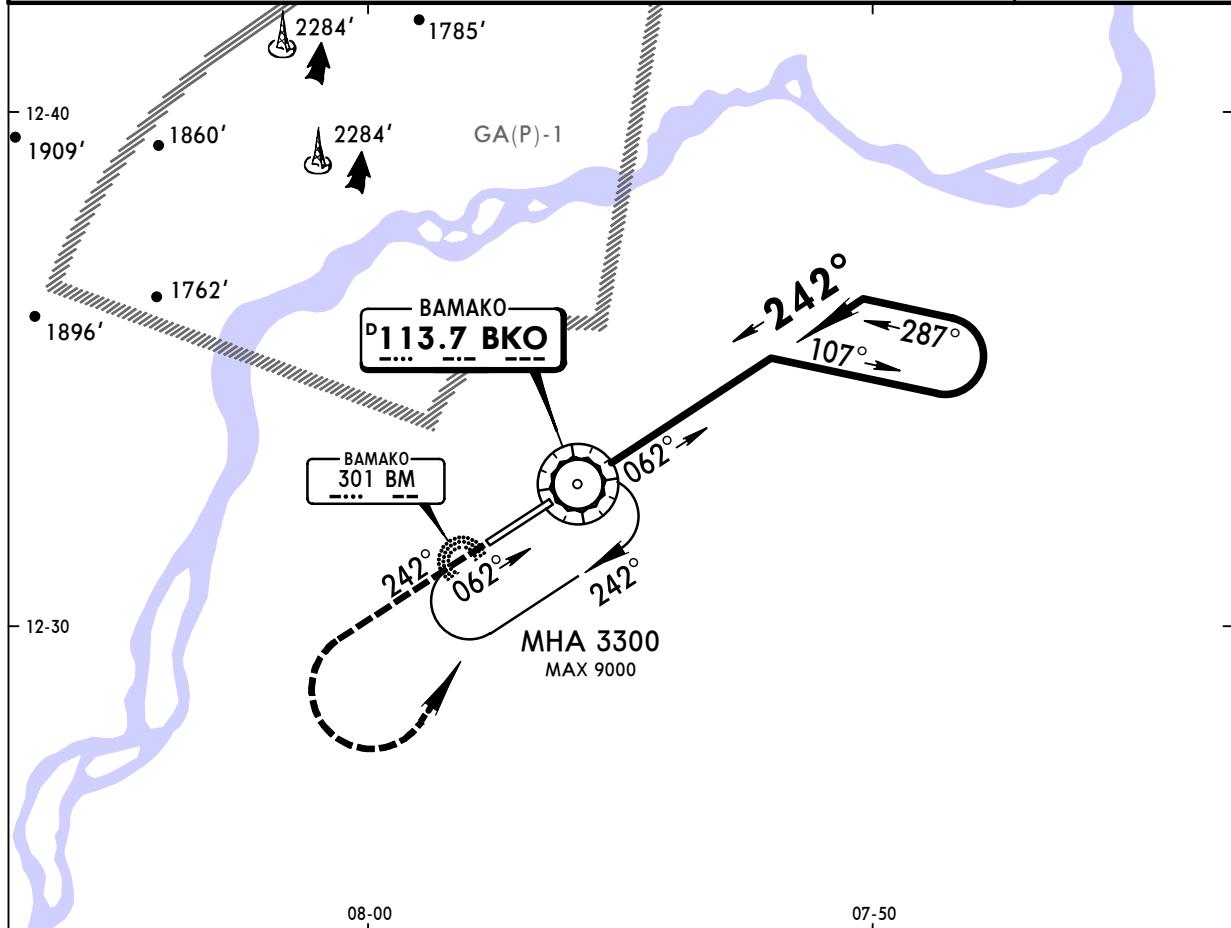
GABS/BKO
SENOU

JEPPESEN
11 MAY 07 **(13-4)**

BAMAKO, MALI
VOR Rwy 24

BRIEFING STRIP™

Approach Control through Tower BAMAKO Tower 118.3					 <p>MSA BKO VOR ① 3300' within D13.0</p>
VOR BKO 113.7	Final Apch Crs 242°	Minimum Alt No FAF	MDA(H) 1830' (586')	Apt Elev 1247' RWY 1244'	
MISSED APCH: Climb STRAIGHT AHEAD to 2900', then climbing turn LEFT to 3300' to rejoin VOR.					
Alt Set: hPa	Rwy Elev: 45 hPa	Trans level: By ATC	Trans alt: 3300'		



					PAPI-L	2900' ↑
MAP at VOR						

JAR-OPS				CIRCLE-TO-LAND ①			
STRAIGHT-IN LANDING RWY 24				DAY		NIGHT	
MDA(H) 1830' (586')				Max Kts	MDA(H)	VIS	NOT AUTH
A RVR 1500m				100	1830' (586')	1500m	
B				135	1830' (586')	1600m	
C RVR 2000m				180	1860' (616')	2400m	
D				205	1950' (706')	3600m	

① Circling height based on rwy 24 thresh elev of 1244'.

CHANGES: Lctr VOR procedure withdrawn.

© JEPPESEN SANDERSON, INC., 2000, 2007. ALL RIGHTS RESERVED.

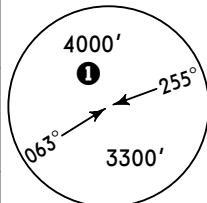
PANS OPS

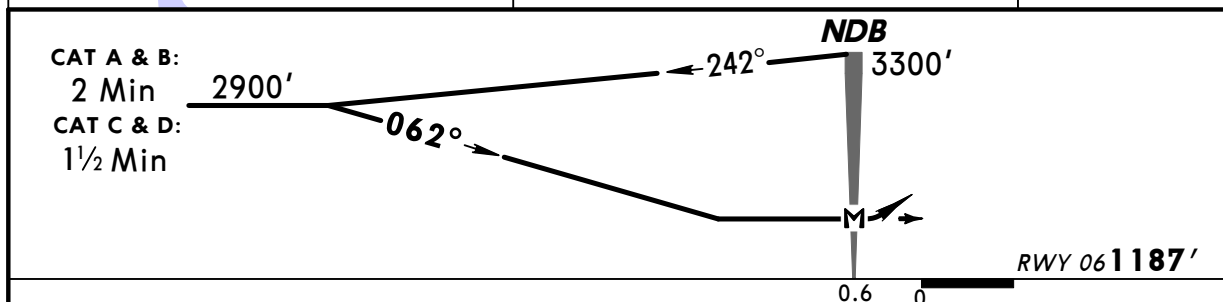
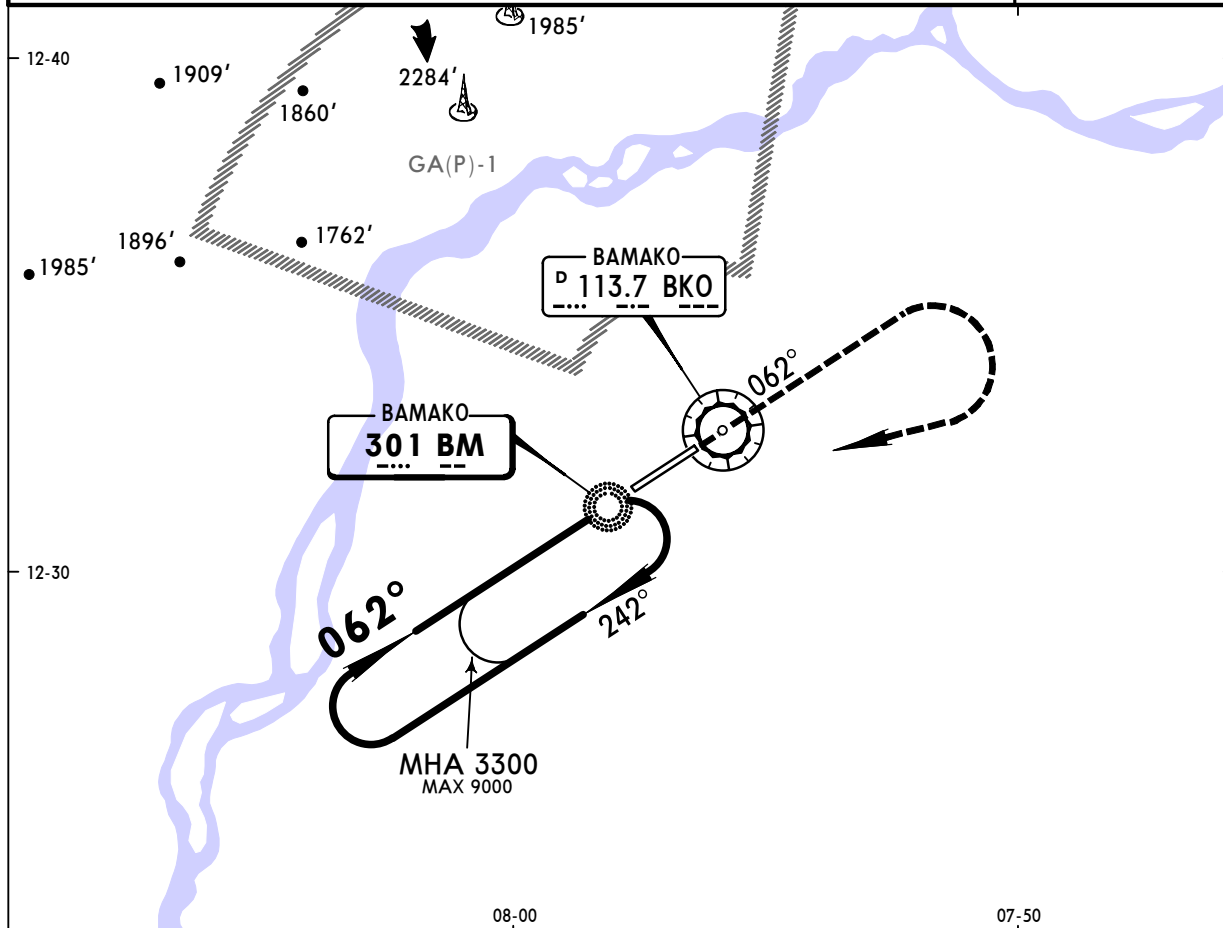
GABS/BKO
SENOU


JEPPESEN
11 MAY 07 **(16-1)**

BAMAKO, MALI
NDB Rwy 06

BRIEFING STRIP™

Approach Control through Tower BAMAKO Tower 118.3					 MSA BKO VOR 1 3300' within D13.0
NDB BM 301	Final Apch Crs 062°	Minimum Alt No FAF	MDA(H) 1510' (323')	Apt Elev 1247' RWY 1187'	
MISSED APCH: Climb STRAIGHT AHEAD to 2900', then climbing turn RIGHT to 3300' to rejoin NDB.					
Alt Set: hPa	Rwy Elev: 43 hPa	Trans level: By ATC	Trans alt: 3300'		



					HIALS 		2900'
MAP at NDB							

JAR-OPS				CIRCLE-TO-LAND			
STRAIGHT-IN LANDING RWY 06							
MDA(H) 1510' (323')							
			ALS out	Max Kts	DAY	NIGHT	
					MDA(H)	VIS	
A	RVR 900m		RVR 1500m	100	1660' (473')	1500m	NOT AUTH
B	RVR 1000m		RVR 1800m	135	1750' (563')	1600m	
C			RVR 2000m	180	1860' (673')	2400m	
D	RVR 1400m			205	1950' (763')	3600m	

1 Circling height based on rwy 06 thresh elev of 1187'.

CHANGES: None.

© JEPPESEN SANDERSON, INC., 2000, 2006. ALL RIGHTS RESERVED.

PANS OPS

GABS/BKO
SENOU

11 MAY 07 (16-2)

BAMAKO, MALI
NDB Rwy 24

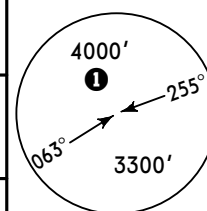
BRIEFING STRIP™

Approach Control through Tower
BAMAKO Tower
118.3

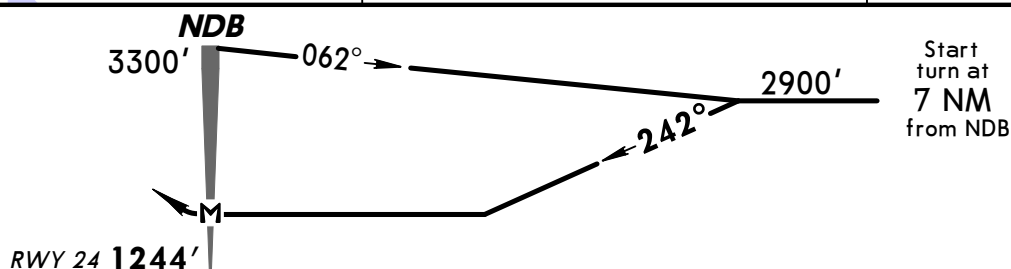
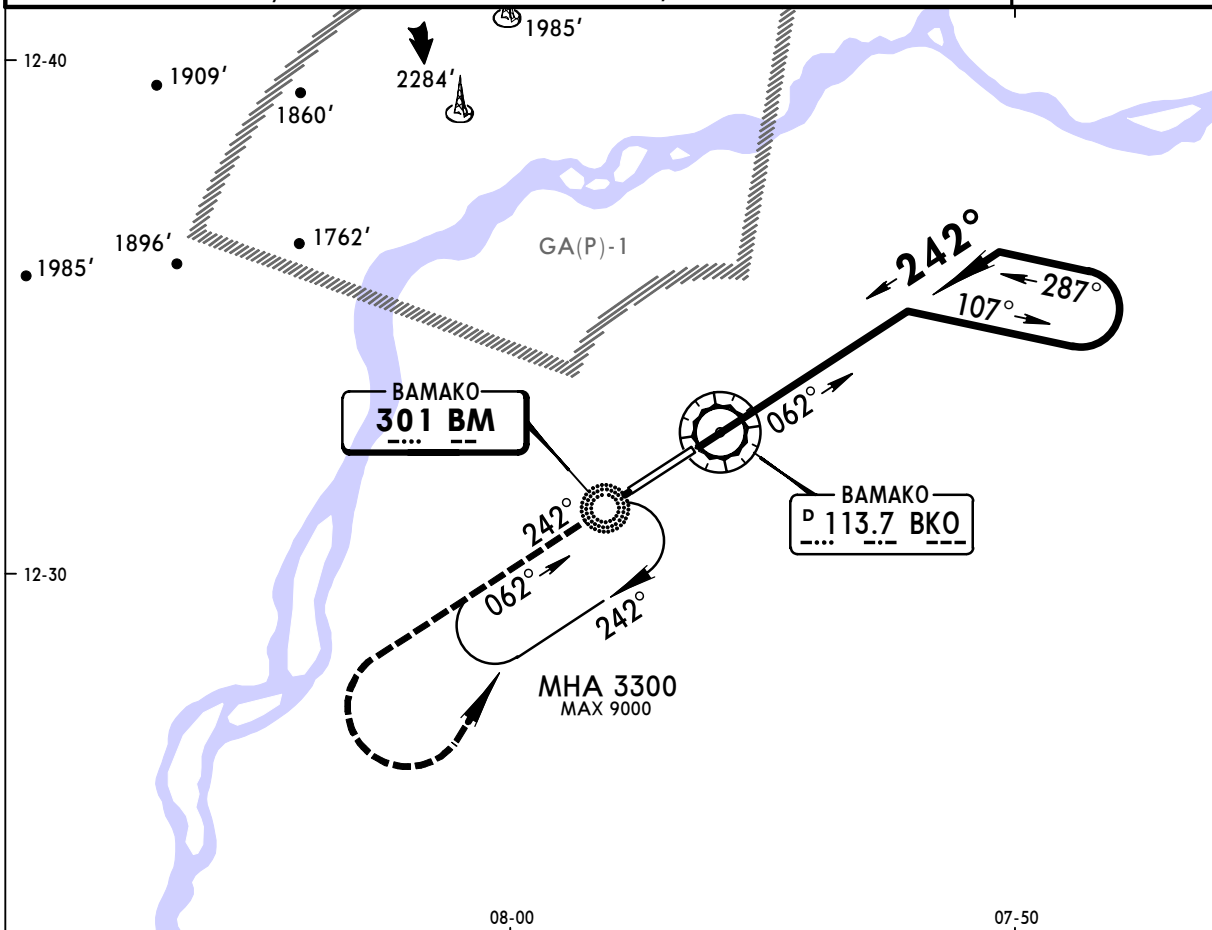
NDB BM 301	Final Apch Crs 242°	Minimum Alt No FAF	MDA(H) 1830' (586')	Apt Elev 1247' RWY 1244'
-------------------------	----------------------------------	-----------------------	-------------------------------	---

MISSED APCH: Climb **STRAIGHT AHEAD** to 2900', then climbing turn **LEFT** to 3300' to rejoin NDB.

Alt Set: hPa	Rwy Elev: 45 hPa	Trans level: By ATC	Trans alt: 3300'
--------------	------------------	---------------------	------------------



MSA BKO VOR
1 3300' within
 D13.0



								PAPI-L	2900 ↑
MAP at NDB									

JAR-OPS

JAR-OPS

STRAIGHT-IN LANDING RWY 24

CIRCLE-TO-LAND 1

2900'



MDA(H) **1830'** (586')

DAY

| NIGHT

MDA(H) 1830' (586')		Max Kts	MDA(H) _____ VIS _____		NOT AUTH
A	RVR 1500m	100	1830' (586')	1500m	
B		135	1830' (586')	1600m	
C	RVR 2000m	180	1860' (616')	2400m	
D		205	1950' (706')	3600m	

1 Circling height based on rwy 24 thresh elev of 1244'.

CHANGES: BN Lctr withdrawn.

© JEPPESEN SANDERSON, INC., 2000, 2007. ALL RIGHTS RESERVED.

PANS OPS