

General Info

Praia, CPV

N 14° 56.5' W 23° 29.1' Mag Var: 12.5°W

Elevation: 324'

Public, IFR, Control Tower, Rotating Beacon, Customs

Fuel: Jet A-1

Time Zone Info: Azores, Cape Verde Is. GMT-1:00 no DST

Runway Info

Runway 03-21 6890' x 148' asphalt

Runway 03 (34.0°M) TDZE 312'

Lights: Edge, ALS

Displaced Threshold Distance 656'

Runway 21 (214.0°M) TDZE 324'

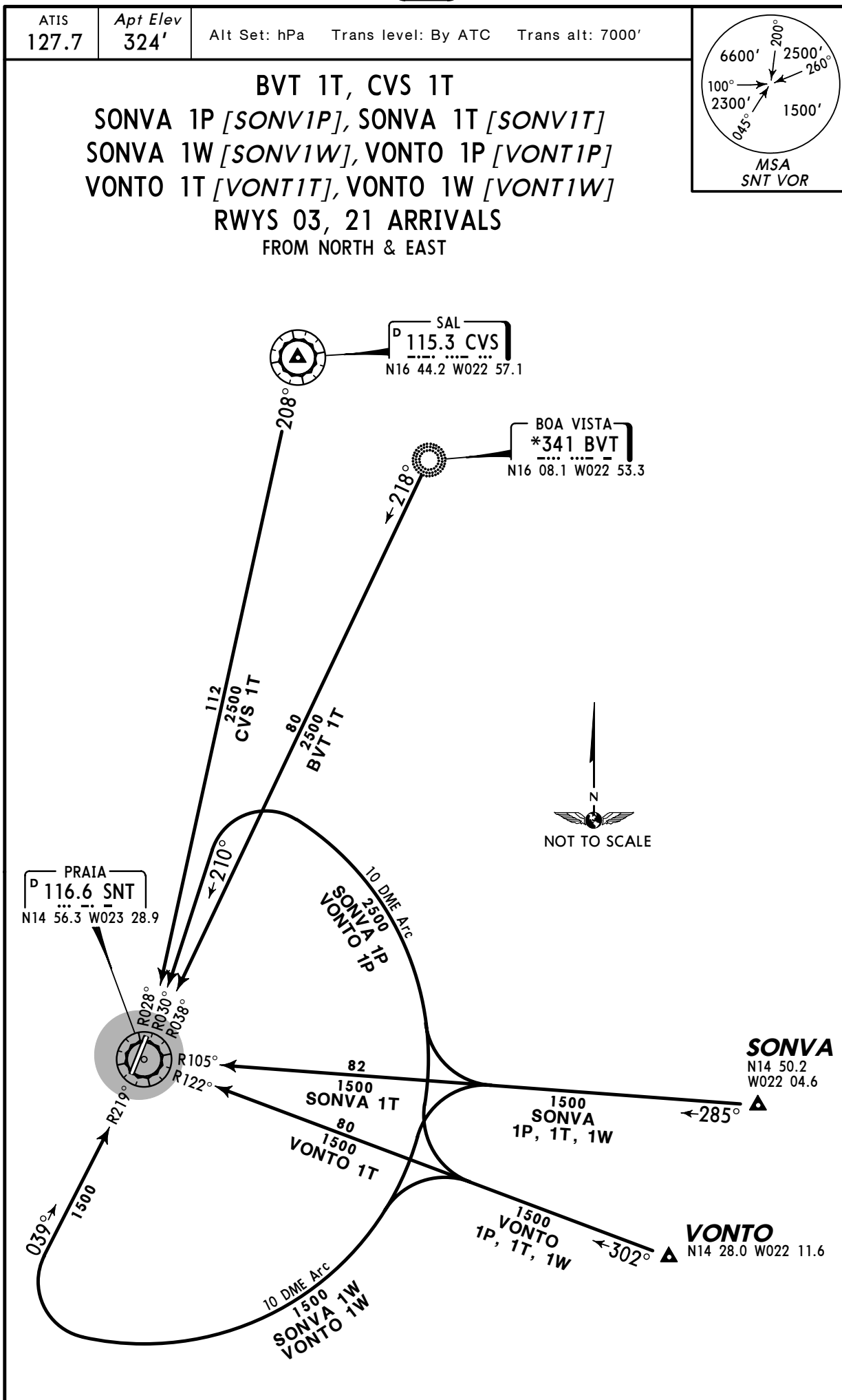
Lights: Edge, ALS

Communications InfoATIS **127.7**Praia Tower **118.2****Notebook Info**

GVNP/RAI
 PRAIA INTL

JEPPESEN
 8 JAN 10 10-2

PRAIA, CAPE VERDE
 STAR



GVNP/RAI
PRAIA INTL

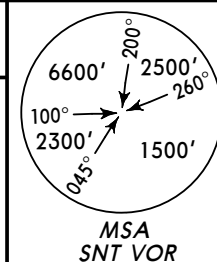
JEPPESEN
8 JAN 10 (10-2A)

PRAIA, CAPE VERDE
STAR

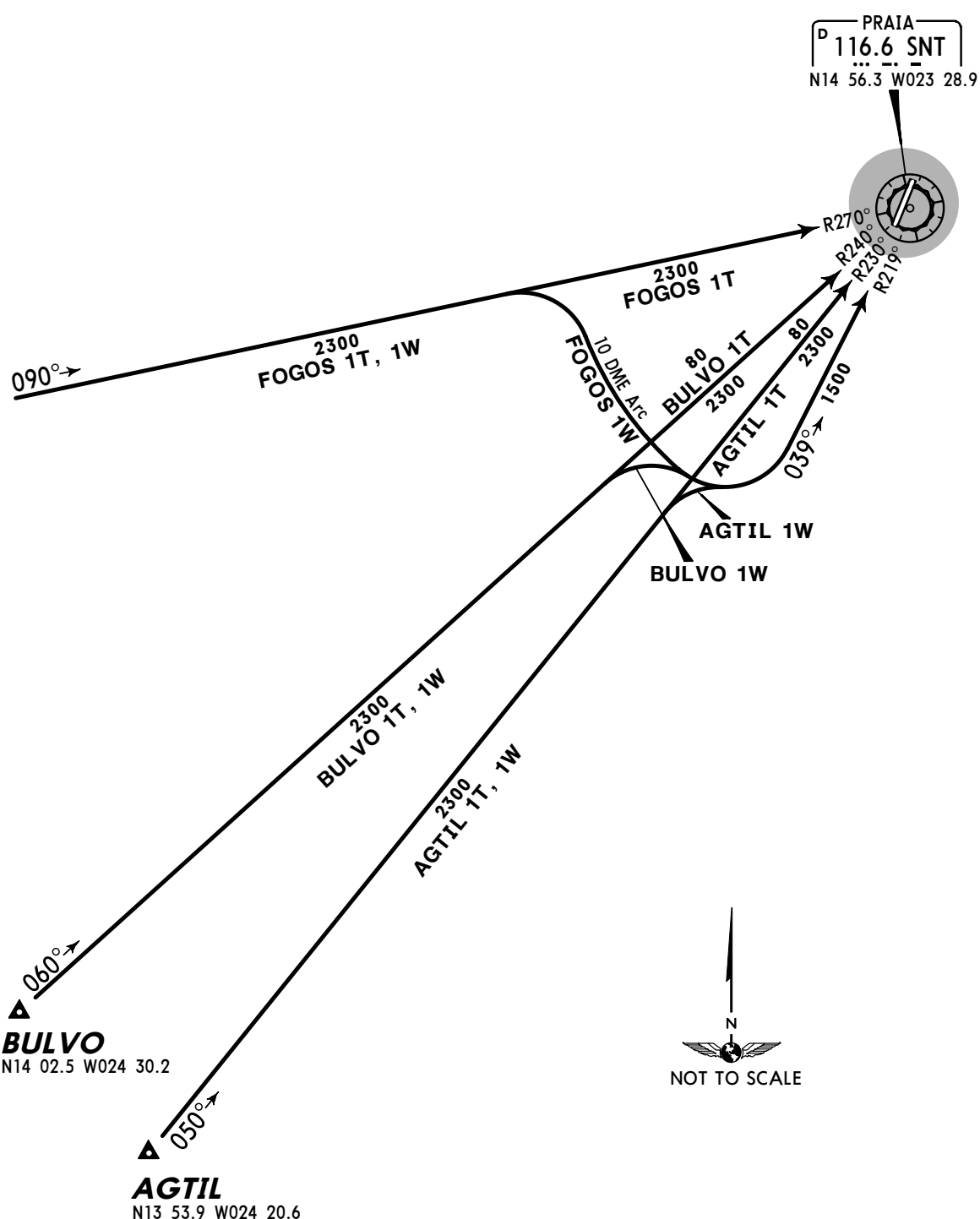
ATIS
127.7

Apt Elev
324'

Alt Set: hPa Trans level: By ATC Trans alt: 7000'



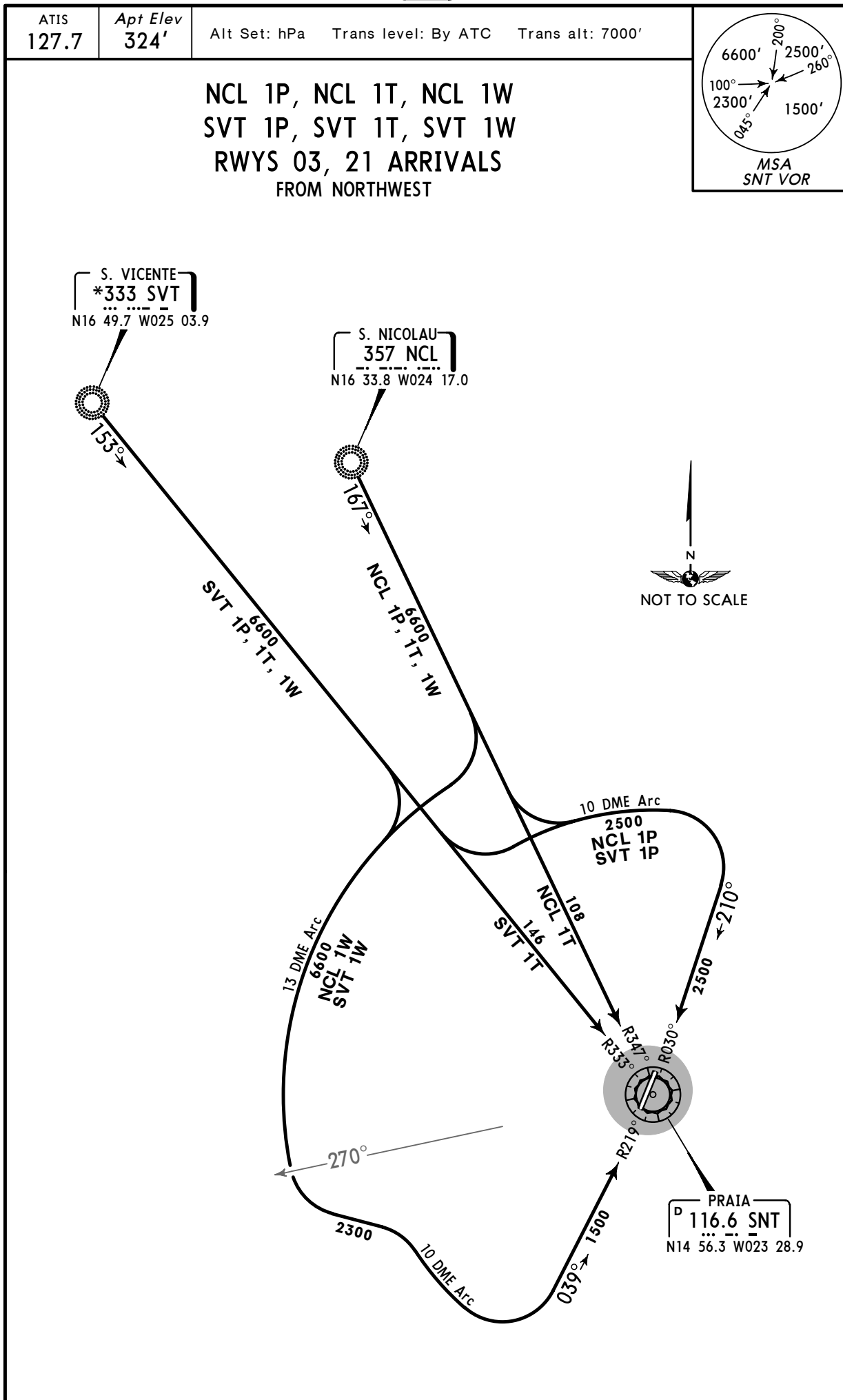
AGTIL 1T [AGT11T], AGTIL 1W [AGT11W]
BULVO 1T [BULV1T], BULVO 1W [BULV1W]
FOGOS 1T, FOGOS 1W
RWYS 03, 21 ARRIVALS
FROM SOUTH & WEST



GVNP/RAI
PRAIA INTL

8 JAN 10 **10-2B**

PRAIA, CAPE VERDE
STAR



GVNP/RAI
 PRAIA INTL

JEPPESEN
 14 MAR 08 10-3

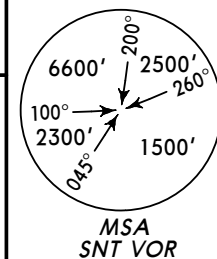
PRAIA, CAPE VERDE
 SID

Apt Elev
 324'

Trans level: By ATC Trans alt: 7000'

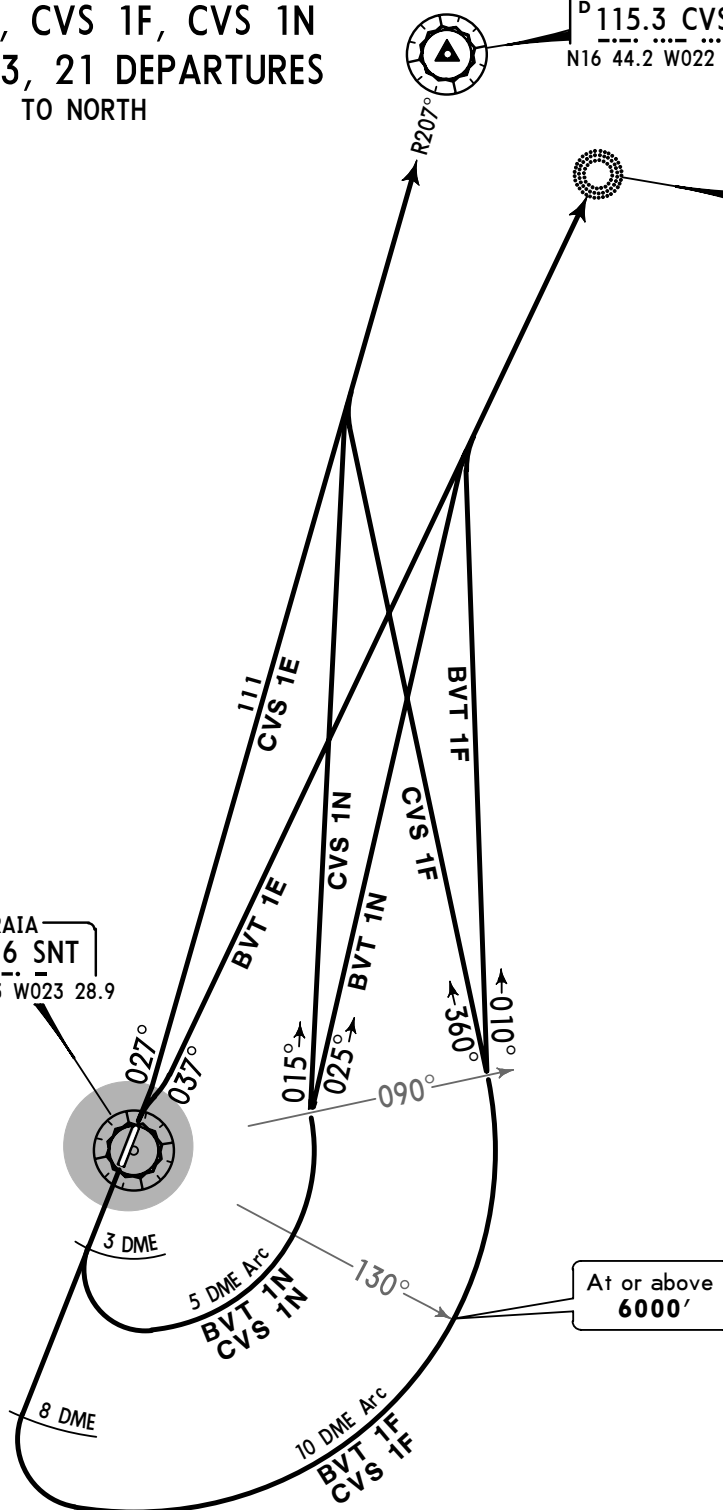
BVT 1E, BVT 1F, BVT 1N
 CVS 1E, CVS 1F, CVS 1N
 RWYS 03, 21 DEPARTURES
 TO NORTH

SAL
 D 115.3 CVS
 N16 44.2 W022 57.1



BOA VISTA
 *341 BVT
 N16 08.1 W022 53.3

PRAIA
 D 116.6 SNT
 N14 56.3 W023 28.9



SID	RWY	ROUTING
BVT 1E	03	Turn RIGHT, intercept SNT R-037 to BVT.
BVT 1F	21	Climb on runway heading to SNT 8 DME, turn LEFT, along SNT 10 DME arc, when crossing SNT R-090 turn RIGHT, 010° track, intercept SNT R-037 to BVT.
BVT 1N		Climb on runway heading to SNT 3 DME, turn LEFT, along SNT 5 DME arc, when crossing SNT R-090 turn RIGHT, 025° track, intercept SNT R-037 to BVT.
CVS 1E	03	Climb on runway heading, intercept SNT R-027 to CVS.
CVS 1F	21	Climb on runway heading to SNT 8 DME, turn LEFT, along SNT 10 DME arc, when crossing SNT R-090 turn RIGHT, 360° track, intercept SNT R-027 to CVS.
CVS 1N		Climb on runway heading to SNT 3 DME, turn LEFT, along SNT 5 DME arc, when crossing SNT R-090 turn RIGHT, 015° track, intercept SNT R-027 to CVS.

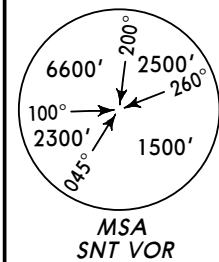
GNP/RAI
PRAIA INTL

JEPPESEN
14 MAR 08 **(10-3A)**

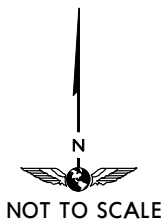
PRAIA, CAPE VERDE
SID

Apt Elev
324'

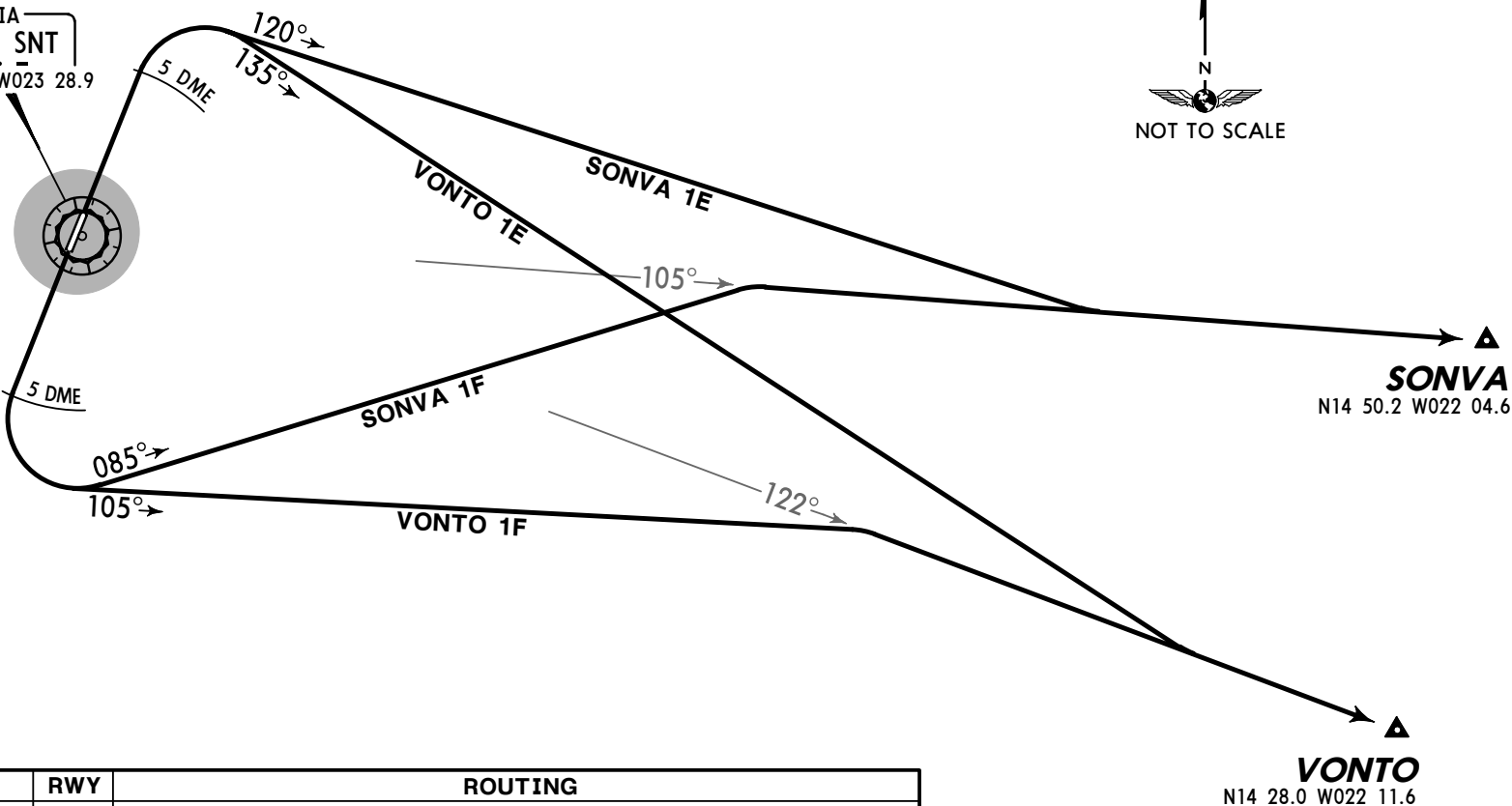
Trans level: By ATC Trans alt: 7000'



**SONVA 1E [SONV1E], SONVA 1F [SONV1F]
VONTO 1E [VONT1E], VONTO 1F [VONT1F]
RWYS 03, 21 DEPARTURES
TO EAST**



PRAIA
D 116.6 SNT
N14 56.3 W023 28.9



SID	RWY	ROUTING
SONVA 1E	03	Climb on runway heading to SNT 5 DME, turn RIGHT, 120° track, intercept SNT R-105 to SONVA.
SONVA 1F	21	Climb on runway heading to SNT 5 DME, turn LEFT, 085° track, intercept SNT R-105 to SONVA.
VONTO 1E	03	Climb on runway heading to SNT 5 DME, turn RIGHT, 135° track, intercept SNT R-122 to VONTO.
VONTO 1F	03	Climb on runway heading to SNT 5 DME, turn LEFT, 105° track, intercept SNT R-122 to VONTO.

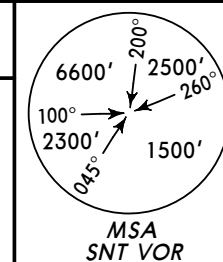
GVNP/RAI
 PRAIA INTL

JEPPESEN
 5 JAN 07 (10-3B)

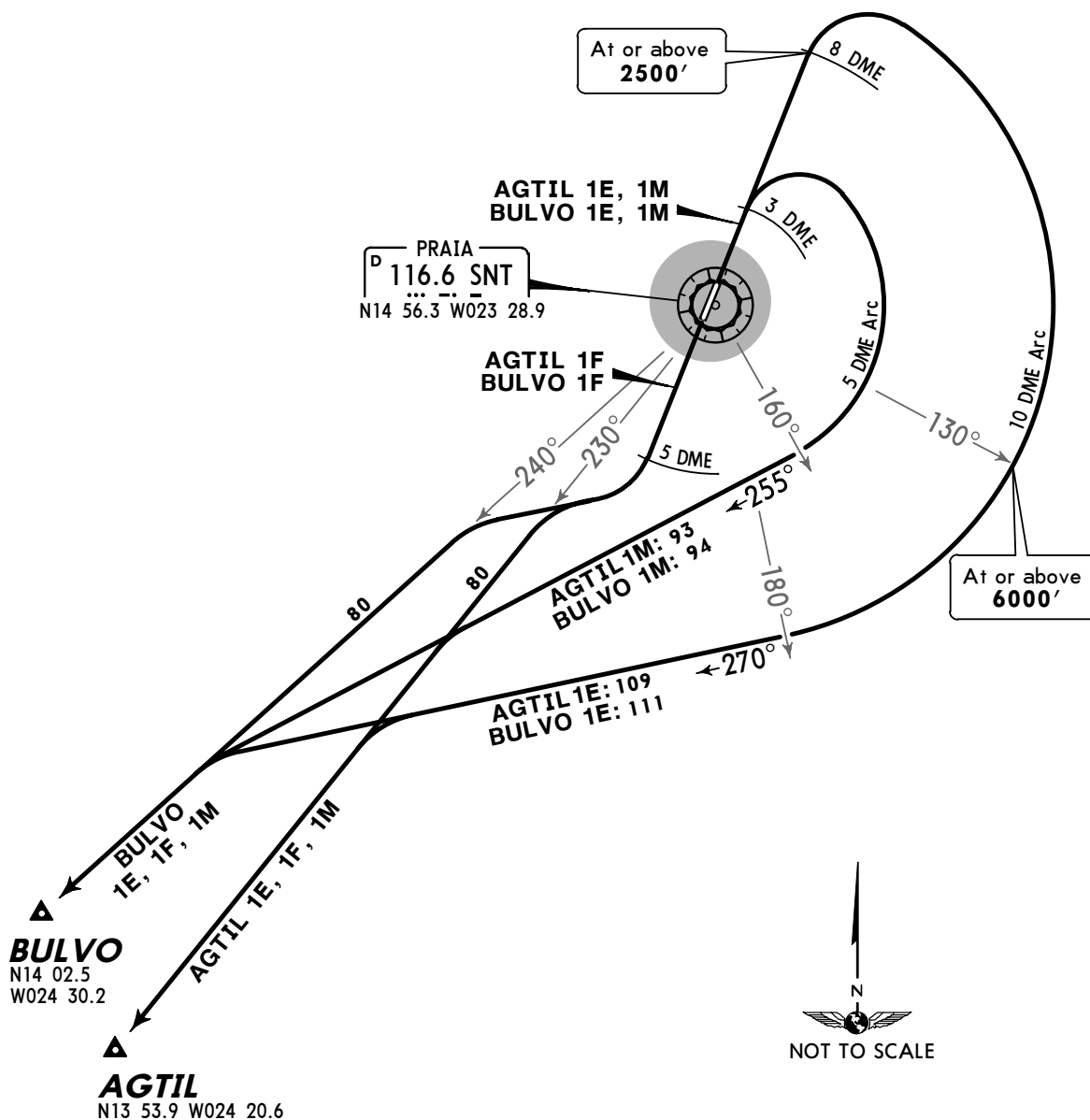
PRAIA, CAPE VERDE
 SID

Apt Elev
 324'

Trans level: By ATC Trans alt: 7000'



AGTIL 1E [AGT11E], AGTIL 1F [AGT11F]
 AGTIL 1M [AGT11M], BULVO 1E [BULV1E]
 BULVO 1F [BULV1F], BULVO 1M [BULV1M]
 RWYS 03, 21 DEPARTURES
 TO SOUTHWEST



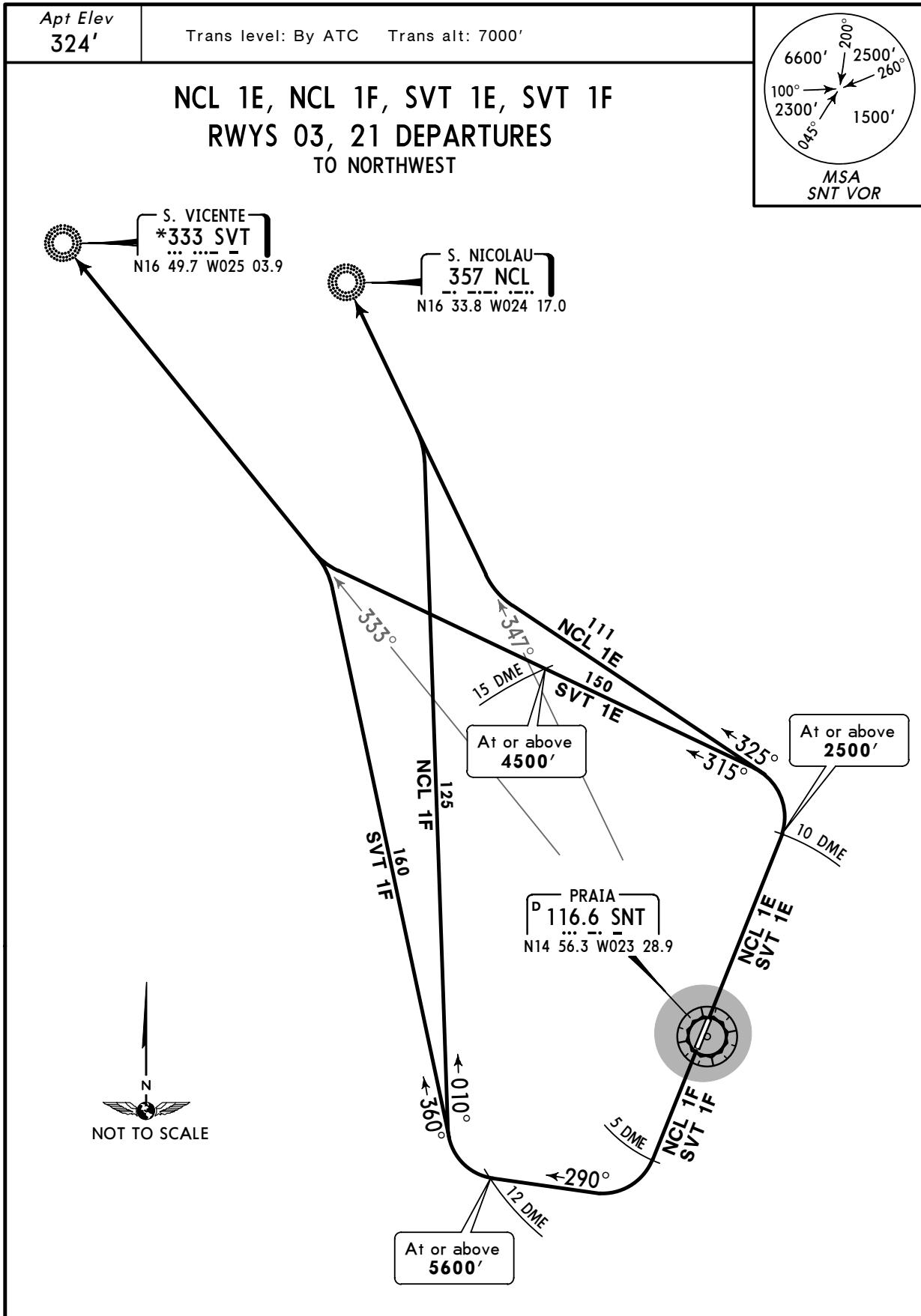
SID	RWY	ROUTING
AGTIL 1E	03	Climb on runway heading to at or above 2500' at SNT 8 DME, turn RIGHT, along SNT 10 DME arc until crossing SNT R-180, 270° track, intercept SNT R-230 to AGTIL.
AGTIL 1F	21	Climb on runway heading to SNT 5 DME, turn RIGHT, intercept SNT R-230 to AGTIL.
AGTIL 1M	03	Climb on runway heading to SNT 3 DME, turn RIGHT, along SNT 5 DME arc until crossing SNT R-160, 255° track, intercept SNT R-230 to AGTIL.
BULVO 1E		Climb on runway heading to at or above 2500' at SNT 8 DME, turn RIGHT, along SNT 10 DME arc until crossing SNT R-180, 270° track, intercept SNT R-240 to BULVO.
BULVO 1F	21	Climb on runway heading to SNT 5 DME, turn RIGHT, intercept SNT R-240 to BULVO.
BULVO 1M	03	Climb on runway heading to SNT 3 DME, turn RIGHT, along SNT 5 DME arc until crossing SNT R-160, 255° track, intercept SNT R-240 to BULVO.

GVNP/RAI
 PRAIA INTL

JEPPESSEN
 5 JAN 07 (10-3C)

PRAIA, CAPE VERDE

SID



SID	RWY	ROUTING
NCL 1E	03	Climb on runway heading to at or above 2500' at SNT 10 DME, turn LEFT, 325° track, intercept SNT R-347 to NCL.
NCL 1F	21	Climb on runway heading to SNT 5 DME, turn RIGHT, 290° track, at SNT 12 DME turn RIGHT, 010° track, intercept SNT R-347 to NCL.
SVT 1E	03	Climb on runway heading to at or above 2500' at SNT 10 DME, turn LEFT, 315° track, intercept SNT R-333 to SVT.
SVT 1F	21	Climb on runway heading to SNT 5 DME, turn RIGHT, 290° track, at SNT 12 DME turn RIGHT, 360° track, intercept SNT R-333 to SVT.

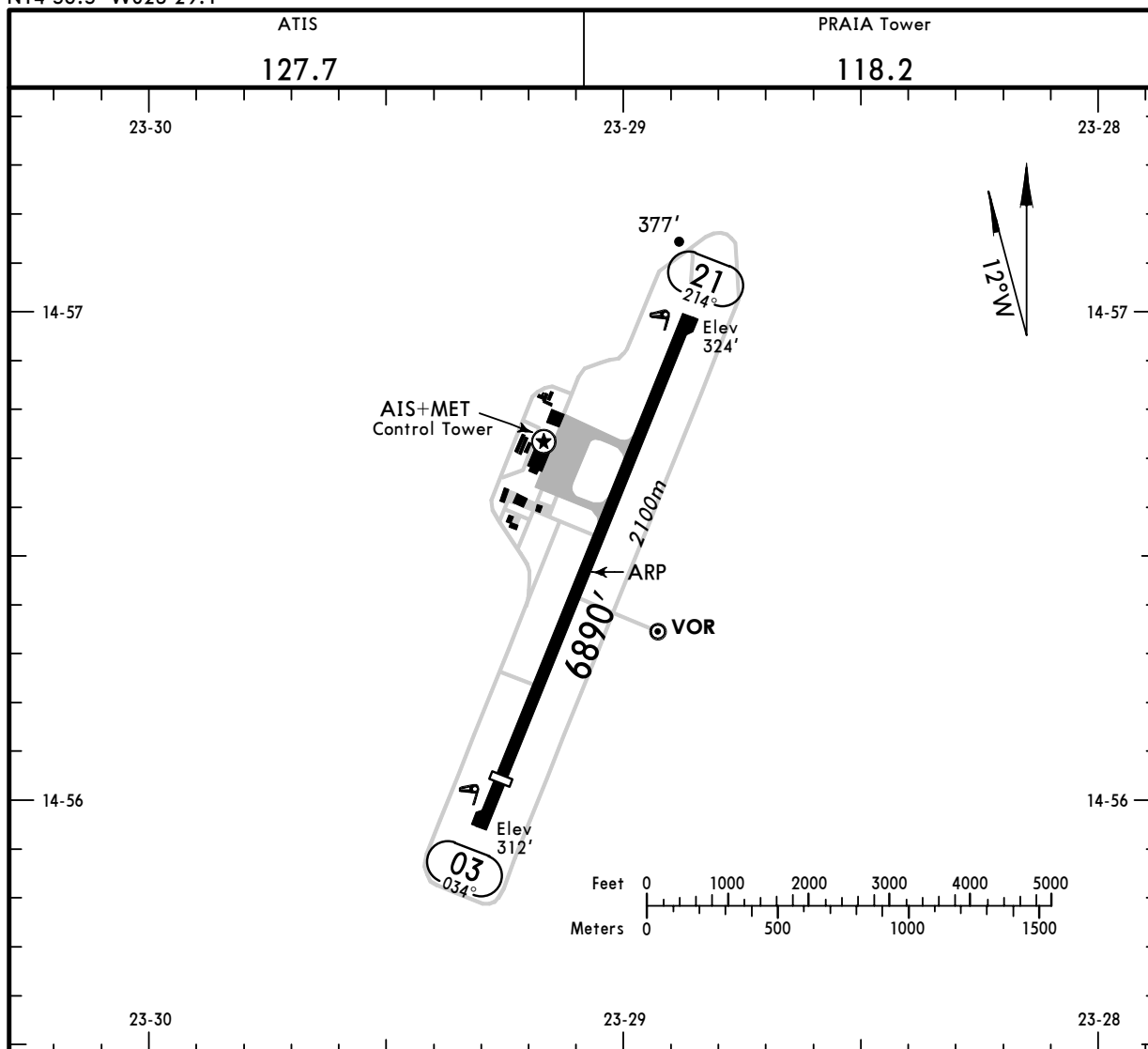
CHANGES: New procedures at this airport.

© JEPPESSEN SANDERSON, INC., 2007. ALL RIGHTS RESERVED.

GVNP/RAI
Apt Elev **324'**
N14 56.5 W023 29.1

JEPPesen
12 FEB 10 (10-9)

PRAIA, CAPE VERDE
PRAIA INTL



ADDITIONAL RUNWAY INFORMATION					
RWY			USABLE LENGTHS		WIDTH
			Threshold	Glide Slope	
03	21	RL ALS ① PAPI (angle 3.0°)	6234' 1900m		148'
			6578' 2005m	6578' 2005m	45m

① Configuration unknown.

TAKE-OFF	
AIR CARRIER (JAA)	
All Rwys	
A	LVP must be in force RCLM (DAY only) or RL
B	250m
C	
D	300m
	RCLM (DAY only) or RL
	400m

CHANGES: Rwy length. Usable lengths.

© JEPPesen, 2004, 2010. ALL RIGHTS RESERVED.

GVNP/RAI

18 MAR 11 **JEPPESEN**
10-9S

Standard
PRAIA, CAPE VERDE
PRAIA INTL

STRAIGHT-IN RWY		A	B	C	D
03	VOR ①	710' (398')	710' (398')	710' (398')	710' (398')
		R1500m	R1500m	R1800m	R1800m
21	VOR ①	760' (436')	760' (436')	760' (436')	760' (436')
		R1500m	R1500m	R2000m	R2000m

① Continuous Descent Final Approach.

CIRCLE-TO-LAND	100 KT	135 KT	180 KT	205 KT
After VOR 03 ①②	810' (498')	830' (518')	930' (618')	1030' (718')
NDB 03 ②③	760' (448')	830' (518')	930' (618')	1030' (718')
After VOR 21 ①	810' (486')	830' (506')	930' (606')	1030' (706')
NDB 21 ③	760' (436')	830' (506')	930' (606')	1030' (706')
	V1500m	V1600m	V2400m	V3600m

① Not authorized West of apt between R-219 and R-017 clockwise.

② Circling height based on rwy 03 displ thresh elev of 312'.

③ Not authorized West of apt between 232° and 052° clockwise.

TAKE-OFF RWY 03, 21

LVP must be in Force		
	RCLM (DAY only) or RL	RCLM (DAY only) or RL
A		NIL (DAY only)
B	250m	
C		400m
D	300m	500m

GVNP/RAI

JEPPESEN
 30 MAR 07 10-9X

JAA MINIMUMS
 PRAIA, CAPE VERDE
 PRAIA INTL

STRAIGHT-IN RWY		A	B	C	D
03	VOR DME	710' (398')	710' (398')	710' (398')	710' (398')
		R1300m	R1400m	R1600m	R1800m
	ALS out	R1500m	R1500m	R1800m	R2000m
21	VOR DME	760' (436')	760' (436')	760' (436')	760' (436')
		R1300m	R1400m	R1600m	R1800m
	ALS out	R1500m	R1500m	R1800m	R2000m

CIRCLE-TO-LAND	100 KT	135 KT	180 KT	205 KT
after VOR DME 03 ❶❷	810' (498')	820' (508')	920' (608')	1020' (708')
	V1500m	V1600m	V2400m	V3600m
CIRCLING NDB 03 ❷❸	760' (448')	820' (508')	920' (608')	1020' (708')
	V1500m	V1600m	V2400m	V3600m
after VOR DME 21 ❶	810' (486')	830' (506')	930' (606')	1030' (706')
	V1500m	V1600m	V2400m	V3600m
CIRCLING NDB 21 ❸	760' (436')	830' (506')	930' (606')	1030' (706')
	V1500m	V1600m	V2400m	V3600m

❶ Not authorized West of apt between R-219 and R-017 clockwise.

❷ Circling heights based on rwy 03 displ thresh elev of 312'.

❸ Not authorized West of apt between 232° and 052° clockwise.

TAKE-OFF RWY 03, 21

LVP must be in Force			
RCLM (DAY only) or RL		RCLM (DAY only) or RL	NIL (DAY only)
A	250m	400m	500m
B			
C			
D	300m		

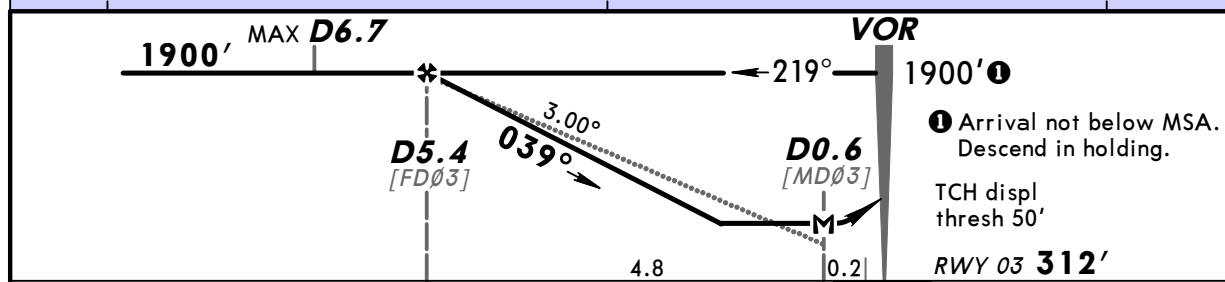
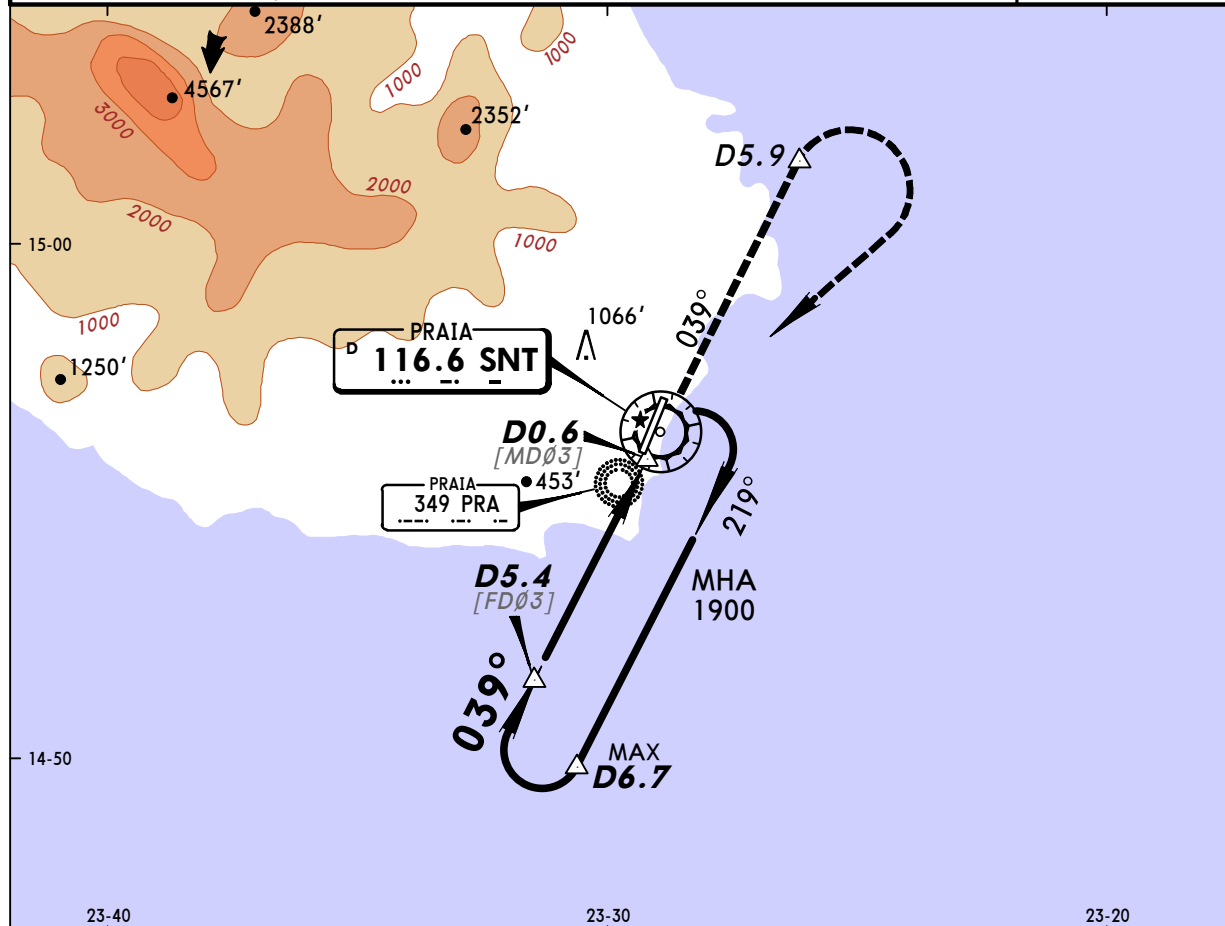
GVNP/RAI
PRAIA INTL

JEPPESEN
22 JAN 10 (13-1)

PRAIA, CAPE VERDE
VOR DME Rwy 03

BRIEFING STRIP

ATIS 127.7				PRAIA Tower (APP/TWR) 118.2	
VOR SNT 116.6	Final Apch Crs 039°	Minimum Alt D5.4 1900' (1588')	MDA(H) 710' (398')	Apt Elev 324' RWY 312'	
MISSED APCH: Climb to 1900'. Climb on R-039 outbound to D5.9, then turn RIGHT to VOR and hold, or as directed.					
Alt Set: hPa	Rwy Elev: 11 hPa	Trans level: By ATC	Trans alt: 7000'	MSA SNT VOR	



Gnd speed-Kts	70	90	100	120	140	160	ALS PAPI	D5.9 ↑ SNT on 116.6 R-039
Descent angle 3.00°	372	478	531	637	743	849		
MAP at D0.6								

STRAIGHT-IN LANDING RWY03				CIRCLE-TO-LAND		
MDA(H) 710' (398')				Not authorized West of apt between R-219 and R-017 clockwise.		
ALS out				Max Kts	MDA(H)	
A				100	810' (498')	1600m
B	1600m			135	820' (508')	1600m
C				180	920' (608')	2800m
D	2000m			205	1020' (708')	3600m

PANS OPS

1 Circling height based on rwy 03 displ thresh elev of 312'.

CHANGES: ATIS frequency.

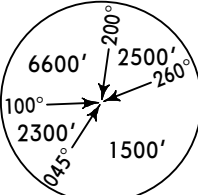
© JEPPESEN, 2005, 2010. ALL RIGHTS RESERVED.

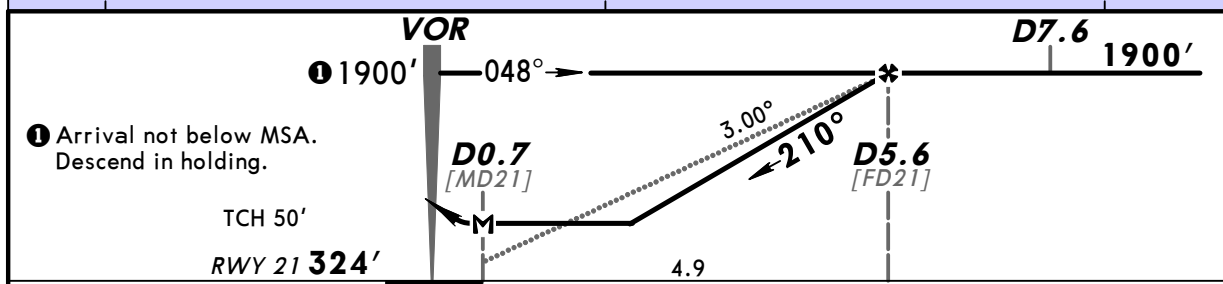
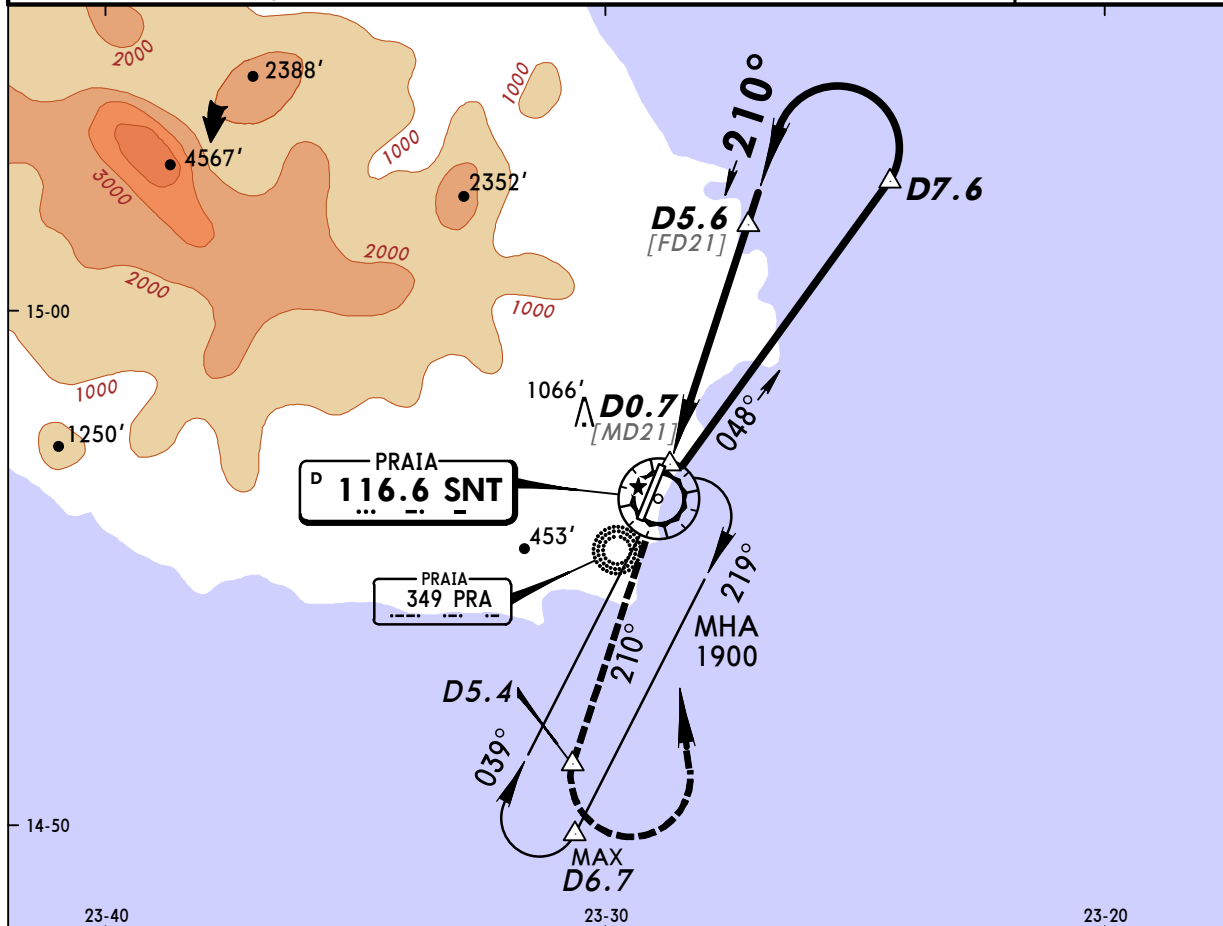
GVNP/RAI
PRAIA INTL

JEPPesen
22 JAN 10 (13-2)

PRAIA, CAPE VERDE
VOR DME Rwy 21

BRIEFING STRIP

ATIS 127.7				PRAIA Tower (APP/TWR) 118.2	
VOR SNT 116.6	Final Apch Crs 210°	Minimum Alt D5.6 1900' (1576')	MDA(H) 760' (436')	Apt Elev 324' RWY 324'	
MISSED APCH: Climb to 1900'. Climb on R-210 outbound to D5.4, then turn LEFT to VOR and hold, or as directed.					
Alt Set: hPa		Rwy Elev: 12 hPa	Trans level: By ATC	Trans alt: 7000'	
MSA SNT VOR					



Gnd speed-Kts	70	90	100	120	140	160	ALS PAPI	D5.4 ↑ SNT on 116.6 R-210
Descent angle 3.00°	372	478	531	637	743	849		
MAP at D0.7								

STRAIGHT-IN LANDING RWY21				CIRCLE-TO-LAND			
MDA(H) 760' (436')				Not authorized West of apt between R-219 and R-017 clockwise.			
ALS out				Max Kts	MDA(H)		
A	1600m			100	810' (486')	1600m	
B	1600m			135	820' (496')	1600m	
C	2000m			180	920' (596')	2400m	
D	2400m			205	1020' (696')	3600m	

PANS OPS

CHANGES: ATIS frequency.

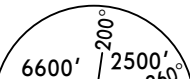
© JEPPESEN, 2005, 2010. ALL RIGHTS RESERVED.

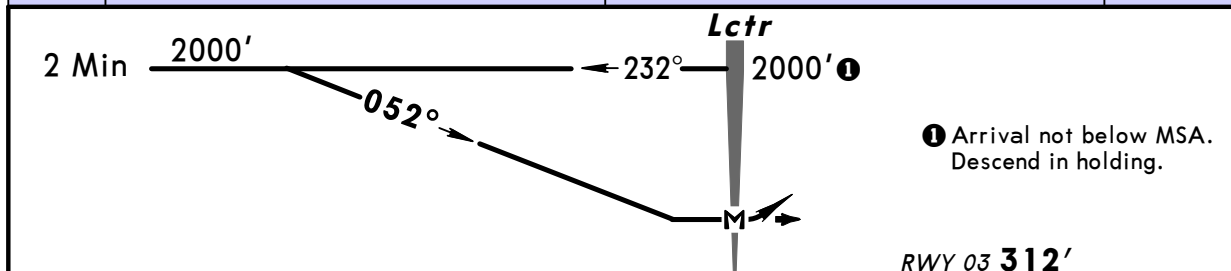
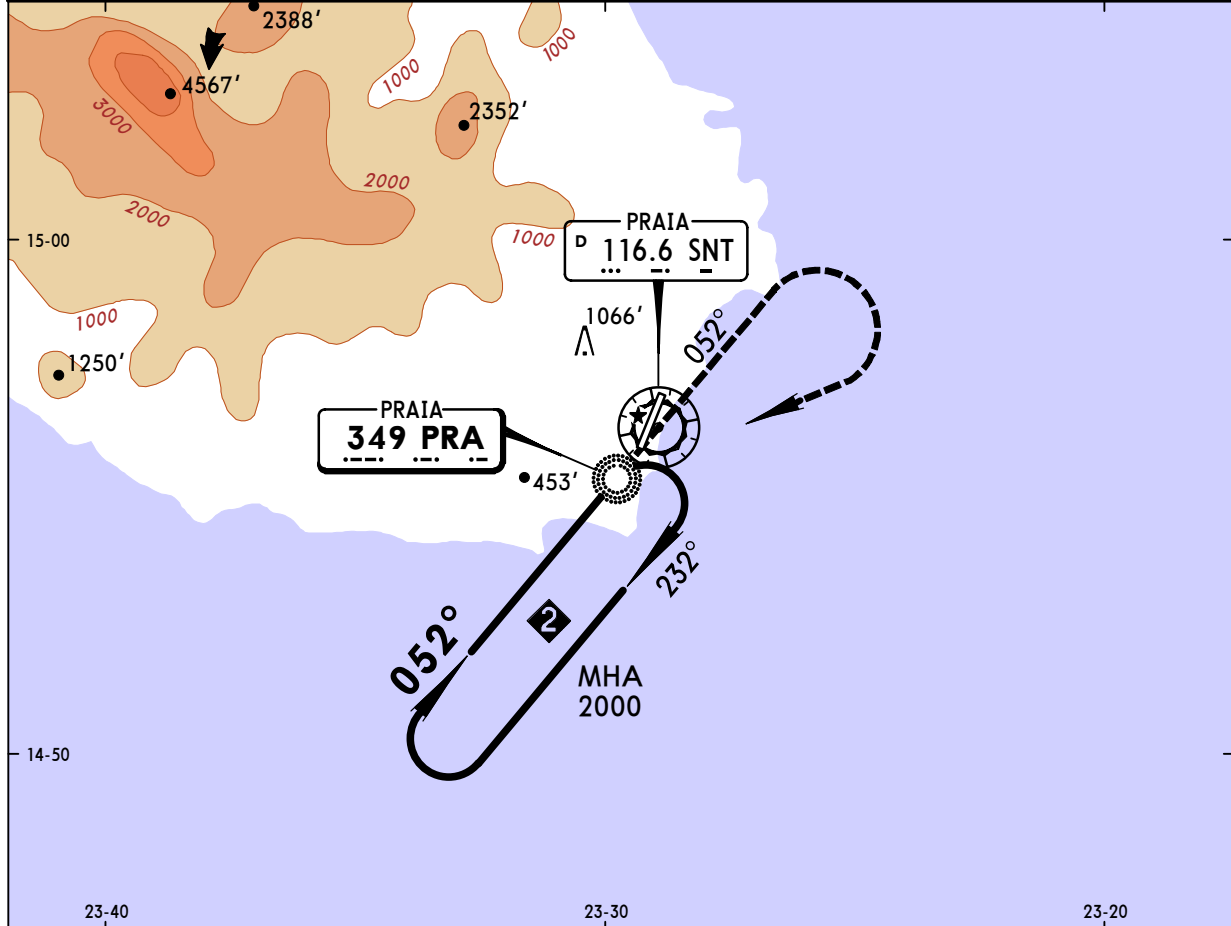
GVNP/RAI
PRAIA INTL

JEPPESEN
22 JAN 10 (16-1)

PRAIA, CAPE VERDE
NDB Rwy 03

BRIEFING STRIP

ATIS				PRAIA Tower (APP/TWR)	
127.7				118.2	
Lctr PRA 349	Final Apch Crs 052°	Minimum Alt No FAF	MDA(H) Refer to Minimums	Apt Elev 324' RWY 312'	
MISSED APCH: Climb to 2000'. Climb on track 052° from Lctr to 1500', then turn RIGHT direct to Lctr and hold, or as directed.					
Alt Set: hPa	Rwy Elev: 11 hPa	Trans level: By ATC	Trans alt: 7000'	MSA SNT VOR	



TO DISPLACED THRESHOLD						0.7	0	RWY 03 312'
MAP at Lctr						ALS PAPI	1500'	052° from PRA 349

STRAIGHT-IN LANDING			CIRCLE-TO-LAND		
NOT AUTHORIZED			Not authorized West of apt between 232° and 052° clockwise.		
			Max Kts	MDA(H)	
			100	760' (448')	1600m
			135	820' (508')	1600m
			180	920' (608')	2800m
			205	1020' (708')	3600m

1 Circling height based on rwy 03 displ thresh elev of 312'.

CHANGES: ATIS frequency.

© JEPPESEN, 2005, 2010. ALL RIGHTS RESERVED.

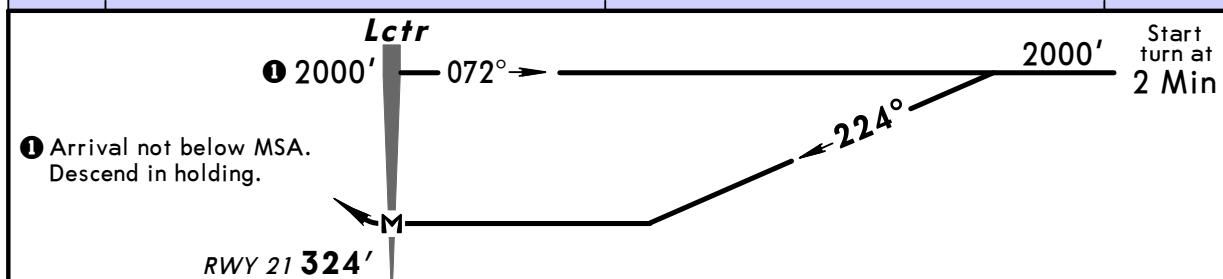
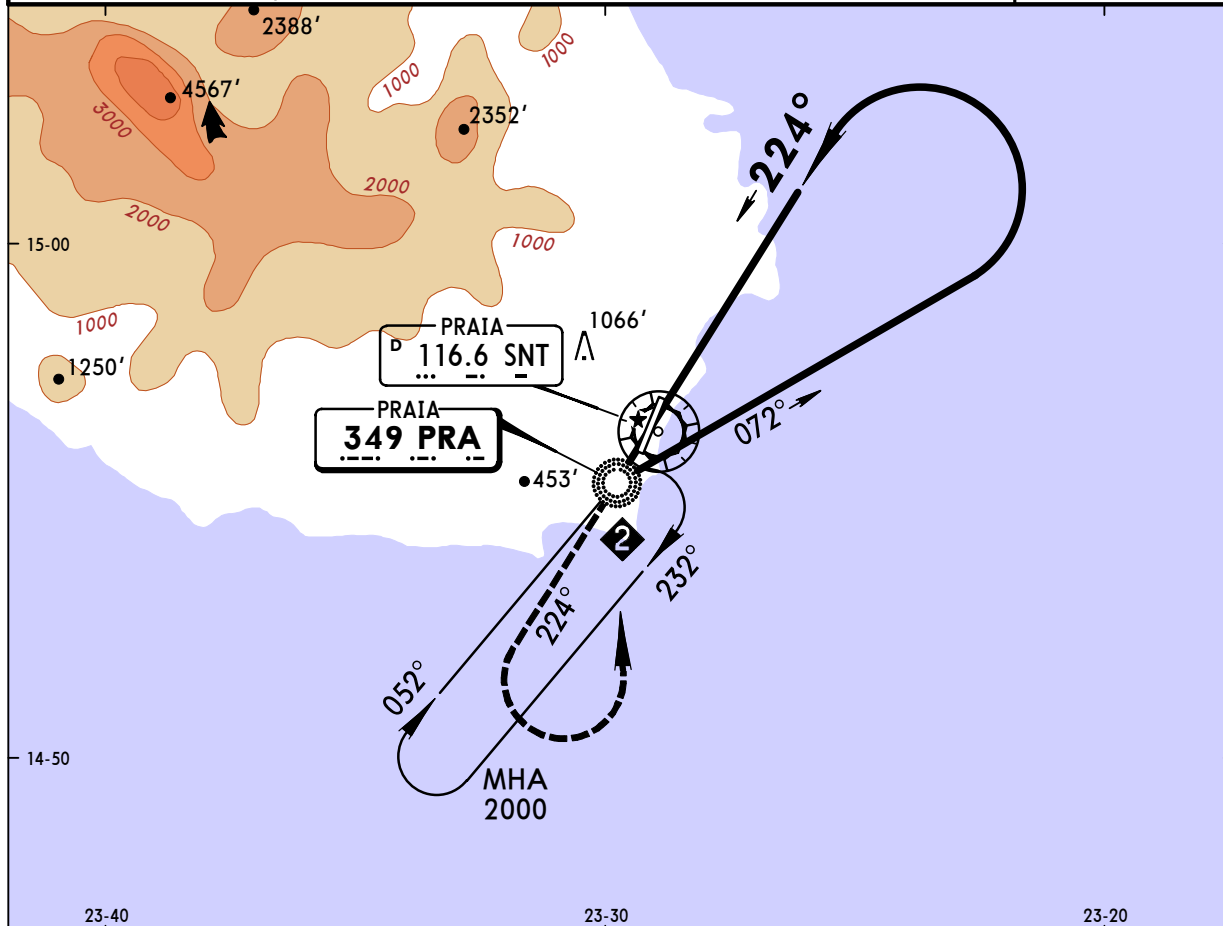
GVNP/RAI
PRAIA INTL

JEPPESEN
22 JAN 10 (16-2)

PRAIA, CAPE VERDE
NDB Rwy 21

BRIEFING STRIP™

ATIS 127.7				PRAIA Tower (APP/TWR) 118.2	
<i>Lctr</i> PRA 349	<i>Final</i> <i>Apch Crs</i> 224°	<i>Minimum Alt</i> No FAF	<i>MDA(H)</i> Refer to Minimums	<i>Apt Elev</i> 324' <i>RWY</i> 324'	
MISSED APCH: Climb to 2000'. Climb on track 224° from Lctr to 1500', then turn LEFT direct to Lctr and hold, or as directed.					
Alt Set: hPa	Rwy Elev: 12 hPa	Trans level: By ATC	Trans alt: 7000'	MSA SNT VOR	

[illegible]

STRAIGHT-IN LANDING

CIRCLE-TO-LAND

Not authorized West of apt
between 232° and 052° clockwise.

		Max Kts.	MDA (H)	
A	NOT AUTHORIZED	100	760' (436')	1600m
B		135	820' (496')	1600m
C		180	920' (596')	2400m
D		205	1020' (696')	3600m

PANS OPS

CHANGES: ATIS frequency.

© JEPPESEN, 2005, 2010. ALL RIGHTS RESERVED.